

**1200 PAX PASSENGER/ CARGO FERRIES AVAILABLE FOR SALE DIRECTLY FROM ITS OWNERS.
ALL VESSELS DUE OUT IN Q1 2026**



Design

BASIC DESIGN



Renowned European Designer
*75 yrs Legacy



MODEL TESTING

Internationally Reputed Ship
Research Institute,
Netherlands



TRACK RECORD OF INTERNATIONAL QUALITY



MAIN PARTICULARS – 1200 Pax

MAIN DIMENSIONS

LOA	157 M
LBP	138.8 M
B (MLD)	21.3 M
TD (MLD)	6.1 M
DISPLACEMENT	13200 T

CAPACITIES

FRESH WATER	ABT. 1500 T
HFO	ABT. 800 T
DIESEL OIL	ABT 160 T
LUBE OIL	ABT. 50 T

PERFORMANCE

SPEED	18 KNOTS
RANGE	4000 NM



MAJOR MACHINERY

PROPULSION TYPE	DIESEL ELECTRIC, TWIN SCREW
MAIN DGS	4 X 4000 KW, 6.6 KV, 60 HZ
PROPULSION MOTORS	2 X 5600 KW
BOW THRUSTERS	1 X 1800 KW
EMERGENCY DG	1 X 600 KW, 440 V, 60 HZ
HARBOUR DG	1 X 1300 KW, 440 V, 60 HZ
DECK CRANE	2 X 25 T ELECTRO-HYDRAULIC
LIFE BOATS	4 Nos on each side
RESCUE BOATS	1 No. on each side

MAIN EQUIPMENT

MAJOR EQUIPMENT	MAKE
MAIN DG'S : 4 X 4000 KW, 6.6 KV, 60 HZ	DAIHATSU JAPAN - DE33
POWER & AUTOMATION PACKAGE, PROPULSION MOTORS : 2 X 5600 KW	ABB
GEAR BOX	RENK
PROPELLER	NAKASHIMA
BOW THRUSTER : 1 X 1800 KW	BRUNVOLL
EMERGENCY DG : 1 X 600 KW, 440 V, 60 HZ	MITSUBISHI
HARBOUR DG : 1 X 1300 KW, 440 V, 60 HZ	DAIHATSU
BOILER/ECONOMISER	ALPHA LAVAL/ALBORG
HVAC SYSTEM	HEINEN & HOPMAN



Class, Rules, & Regulations



*Design Review by
LR London*



IMS CLASS III

LRS +100A1 "Passenger Ship", Ship Right (SDA, CM, ES+1 (Hull Envelope Plate up to and including main deck over 0.5L Amidship)), SCM, LMC, UMS, NAV1, IBS, LI, IWS, SERS, SRtP, HELICOPTER LANDING AREA (Equivalent to DNV HELDK-SH)

IRS + SUL, PASSENGER SHIP, Load Comp(3), INWATER SURVEY, HELDK, +IY, SYJ, IBS, BWE, TCM.

SPECIAL FEATURES

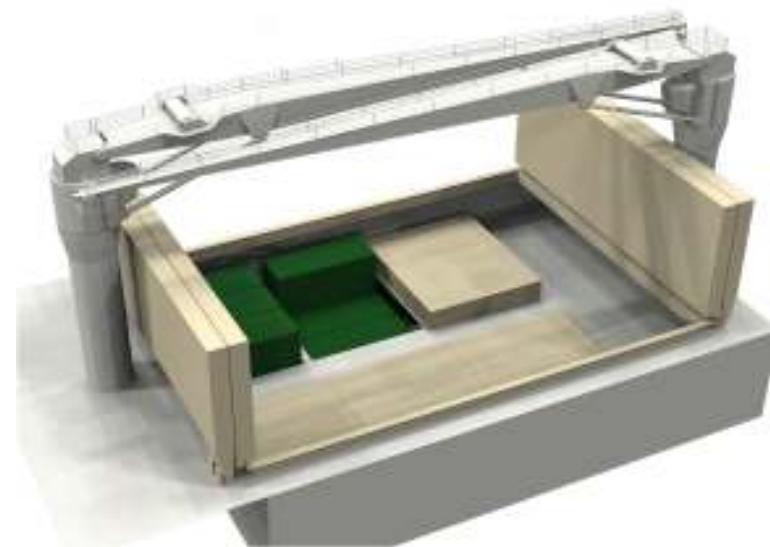
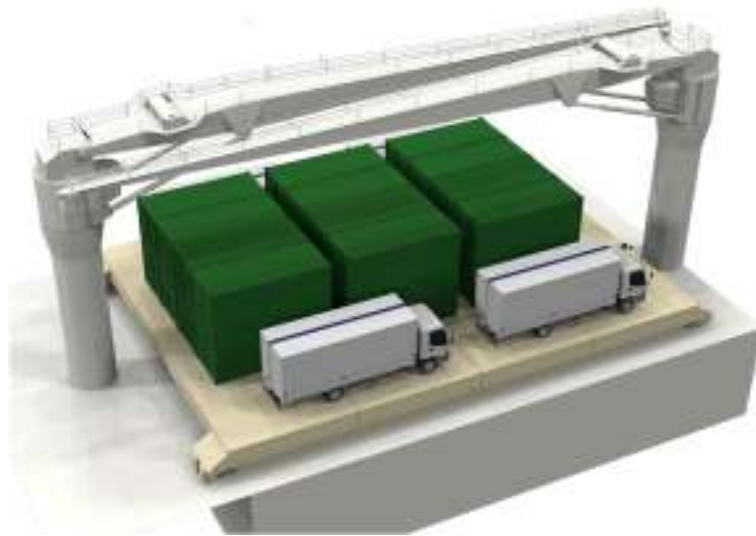
- Accommodation Block
 - 1200 pax. + 104 crew
 - Gymnasium
 - Restaurants
 - Lounges
 - Recreation Rooms
 - Children's Game Room
 - Mother & Child Lounge
 - Hospital
 - Dispensary
- Helicopter Landing Area
- Complies fully with international Passenger Ship safety requirements of IMO



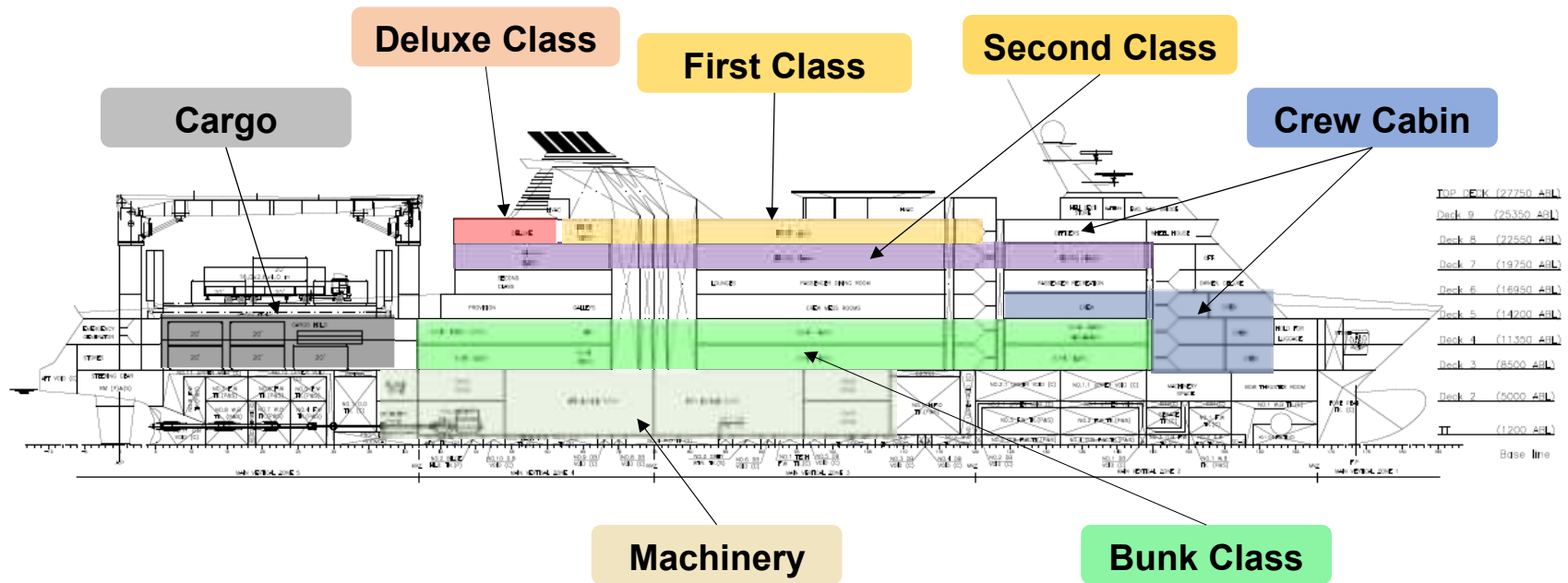
SPECIAL FEATURES

Cargo Capacity

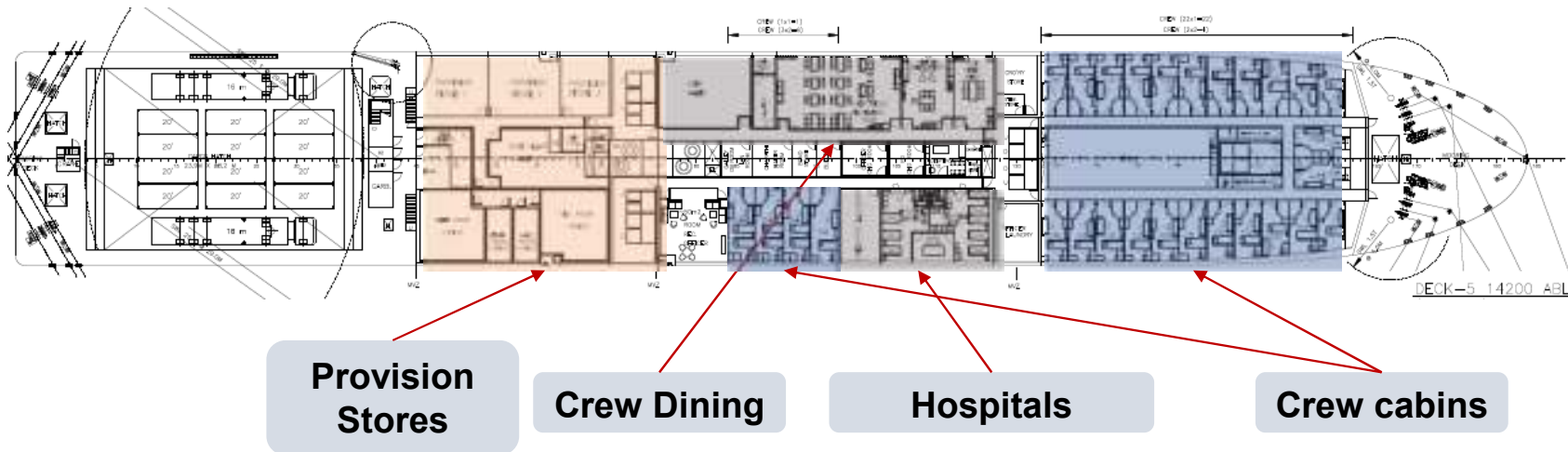
- **1000 MT** Total Capacity
- Cargo hold with folding hatch covers
- Electric Cranes 25 t x 2 Nos.
- Trucks – 2 Nos.
- Reefer Cargo
- Container Cargo (20', 40 Nos.)



GENERAL ARRANGEMENT



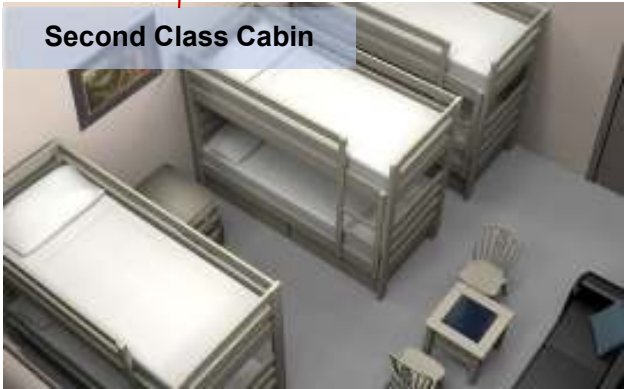
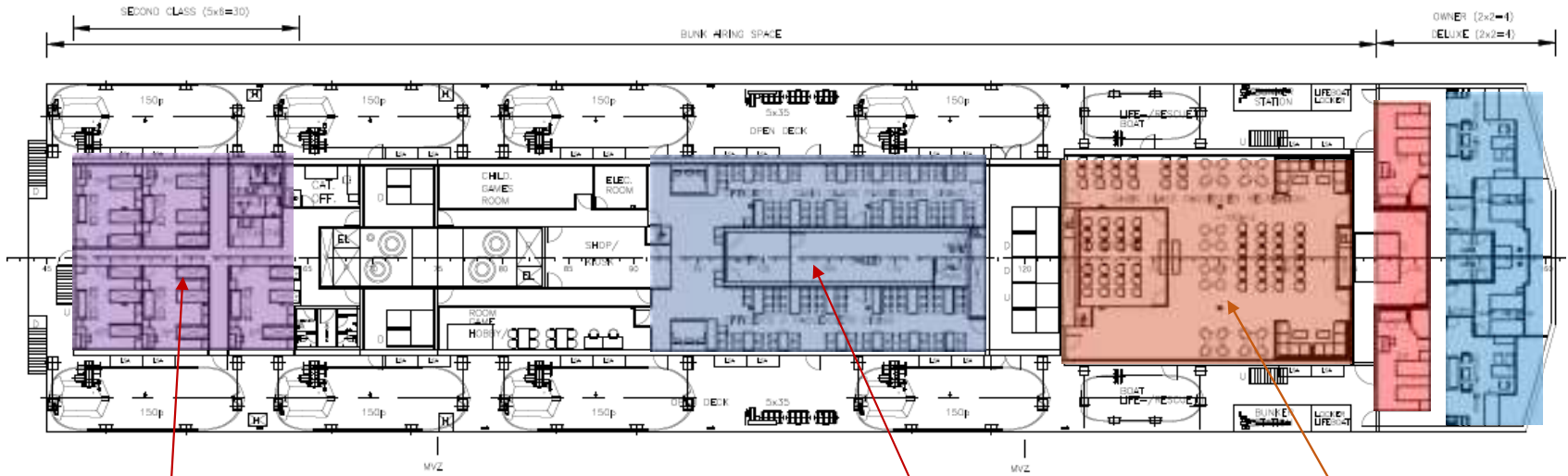
ACCOMMODATION ARRANGEMENT



- Accommodation arranged for 33 crew.
- Forward and aft mooring area is arranged in this deck.
- Provision stores and refrigerated rooms arranged to the aft.
- The deck mainly contains accommodation, galley, mess room, and recreation room for the crew /officers.

DECK- 5

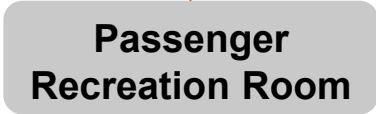
ACCOMMODATION ARRANGEMENT



Second Class Cabin



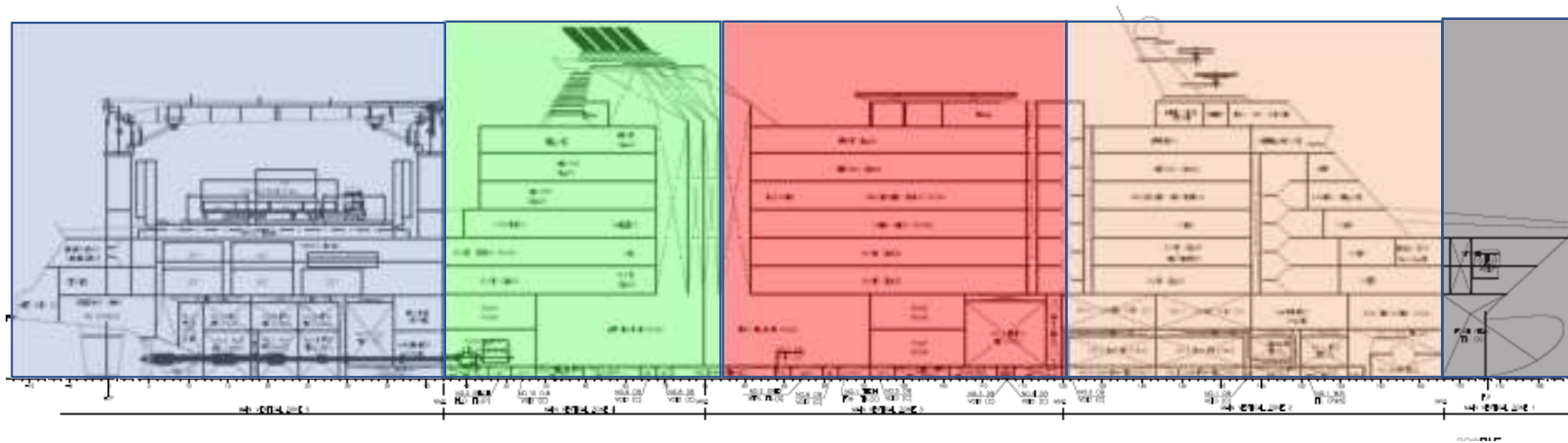
Officer/Passenger Dining



Passenger Recreation Room

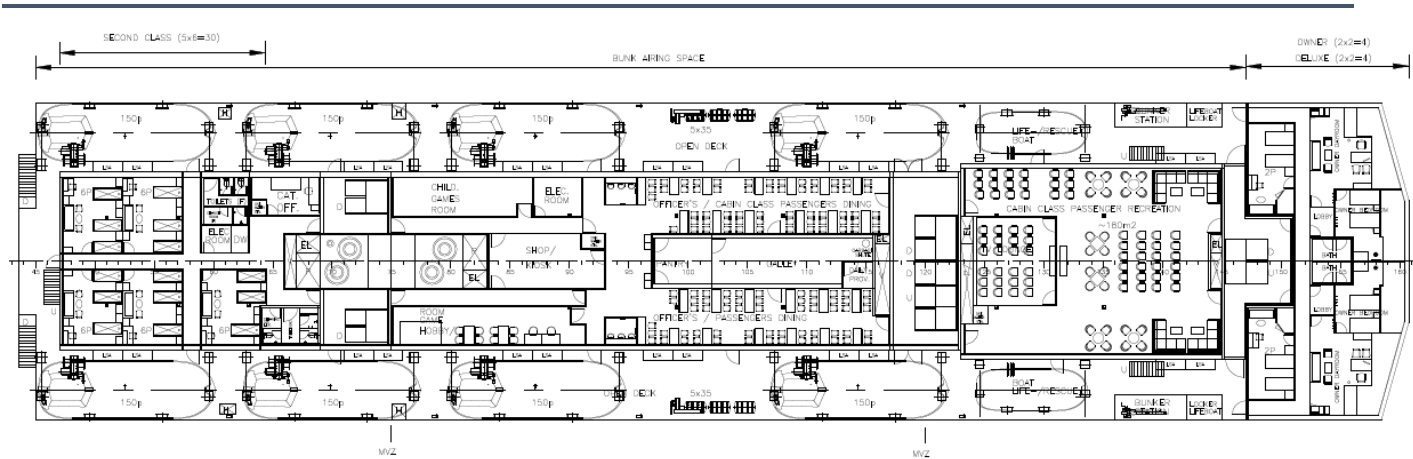
DECK- 6

Main Vertical Fire Zone



- The vessel is divided into 5 Main Vertical Zones and accommodation divided into 3 Main Vertical Zones as shown in the figure.
- All requirements of vertical zones for passenger vessels as per SOLAS provisions are complied.
- The vessel complies with SRtP requirements.

Life Saving Appliances



LSA	QTY	Total Capacity
Lifeboats	4 Nos. X 150 Persons on each Side	1200
Lifeboat-cum-Rescue Boat	1 No. x 55 Persons on each Side	110
Life rafts	5 Nos. x 35 Persons on each Side	350

VESSEL CONSTRUCTION – 65% COMPLETED

