

Built: 2007  
 LOA: 68 m  
 DPS: None  
 Location: Singapore  
 Upon inspection: Price idea is in range of US\$3m

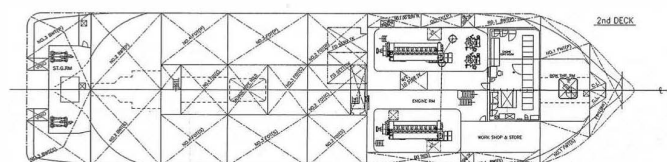
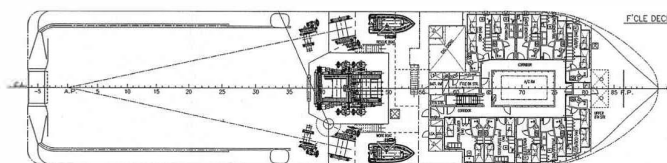
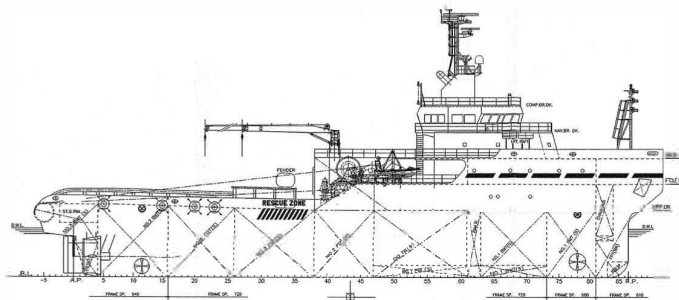
**12,000BHP 156TBP 68M AHT FiFi 1/2**



## 12,000BHP 156TBP Anchor Handling Tug Long Distance Ocean Towing & Salvage

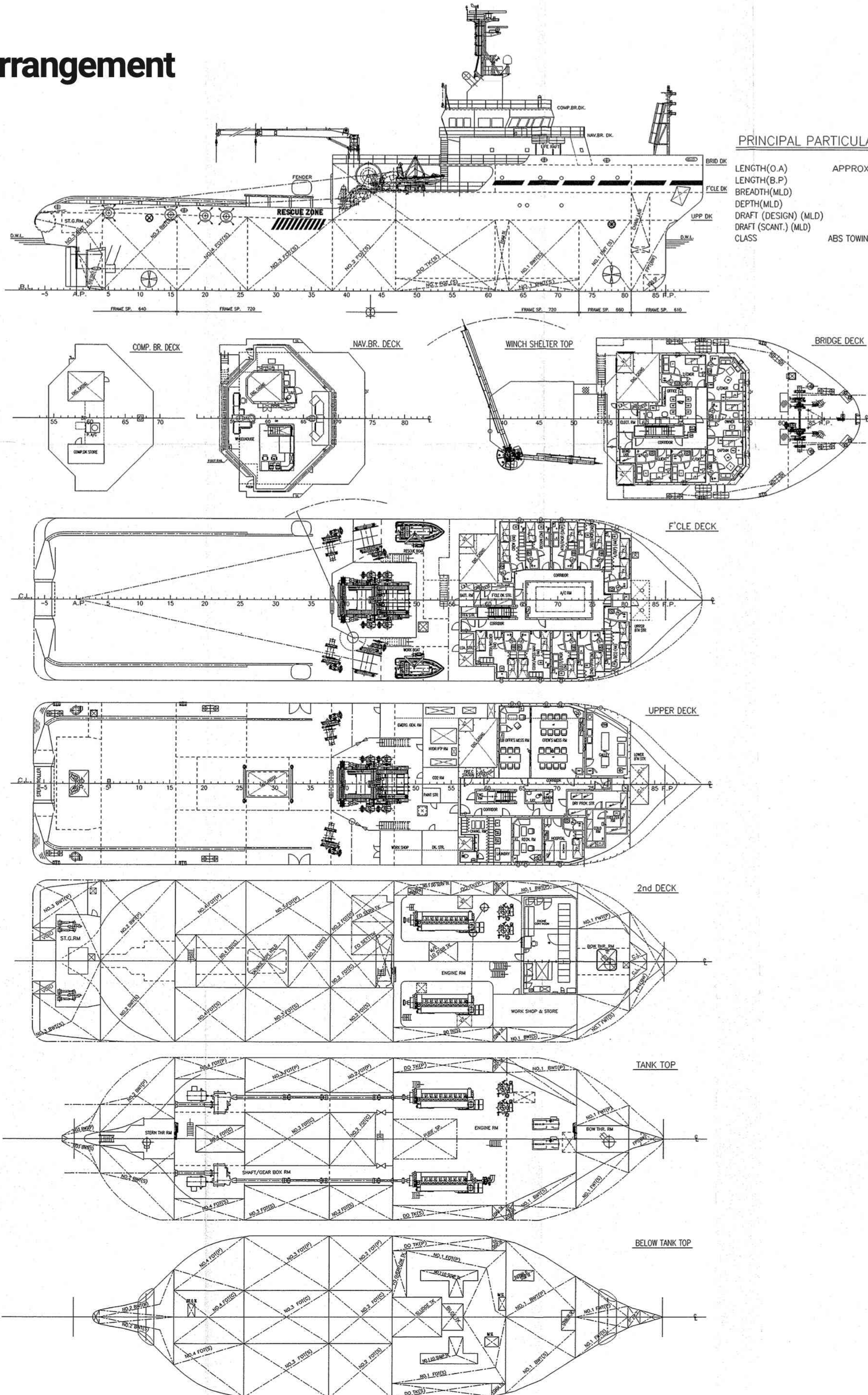
### Features

- ▶ 12,000 BHP (9,000KW) Controllable Pitch Propulsion
- ▶ 800kw Bow Thruster and 600kw Stern Thruster
- ▶ Fuel Capacity : 2050 MT // Clear Deck 380 m<sup>2</sup>
- ▶ Deadweight Capacity 2,800 MT
- ▶ Emergency Rescue & Salvage & Oil Spill Response
- ▶ Fire-Fighting FiFi ½ Foam / Water Dual Monitor
- ▶ V-SAT Ku Band Intellian V85
- ▶ Environmental IMO Compliance
- ▶ Accommodation for 36 person
- ▶ 16 cabins with ensuite bathroom
- ▶ 6 Single Berth Cabin / 5 Double Berth Cabin / 5 x 4 Berth Cabin
- ▶ 1 Ship Office & Instrument Room
- ▶ 1 x 2 Berth Hospital Cabin with Ensuite Bathroom
- ▶ Galley with 2 Mess Room
- ▶ Recreation Room & Gym Facility
- ▶ Laundry Room
- ▶ PPE Changeout with Ensuite Bathroom





# General Arrangement





# 12,000BHP 156TBP 68M AHT FiFi 1/2

## MAIN PARTICULARS

Year Built	2007-03
Place Built	Japan Marine United Corp JAPAN
GRT / NRT	2658 / 797
ABS Class Certificate No.	07161527
Class Notation	ABS ⚠A1 Anchor Handling Towing Salvage Tug Circle E ⚠ AMS Unrestricted Navigation

## DIMENSIONS

Length - OA	68.00 M
Length - BP	60.00 M
Breadth - Moulded	16.40 M
Depth - Moulded	7.20 M
Designed Draft	5.20 M
Deadweight @ 6.00M draft	2800 tons Indicatively
Main Cargo Deck (L x B)	27.0 M X 13.3 M
Free Deck Area	380 M2
Salvage Rope Hold (on deck)	71 m3

## BULK CAPACITIES

Fuel Oil	2050 m3
Diesel Oil Tank	200 m3
Fresh Water	185.0 m3
Water Ballast	980.0 m3
Diesel Oil Service Tank	17 m3
Lube Oil Tank	24 m3
Sludge Tank	25 m3
Dirty Oil Tank / Bilge Tank	1 m3 / 7 m3

## MACHINERY

Main Engine Propulsion	2 x 4500kw@750rpm Wartsila 9L32 Diesel Engine SCH75-P53 CPP Propeller in Kort Nozzle
Bow Tunnel Thruster	1 x 12te thrust @ 800kw RR Kamewa TT1850
Stern Tunnel Thruster	1 x 9.2te thrust @ 590kw RR Kamewa TT1650
Auxilliary Diesel Genset	2 x 300kw Leroy LSAM47.2M7 MAN D2876LE301
Shaft Generator	2 x 1200kw 415V/3P/50Hz Wartsila DSG74L2-4W
Emergency / Harbor Genset	1 x 60kw Leroy LSAM44.2VS3 MAN D0824LE201
Main Air Compressor	2 x 22m3/h Sanwa S8A 2 stage Air cooled
Aux Service Air Compressor	1 x 30m3/h Sanwa S10A 2 Stage Air cooled

## ANCHOR HANDLING TOWING EQUIPMENT

Bollard Pull Approximately	156 tonnes
Anchor Handling Towing Winch	Double drum waterfall Brattvaag SL300/ BSL300W
Line Pull Capacity	300 tonnes @ 1st layer
Brake Holding Capacity	400 tonnes @ 1st layer
Towing Drum Capacity Max	Wire diameter 76mm x 1500 m length
Anchor Handling Drum Max	Wire diameter 76mm x 1500 m length
Storage Reel w/spare wire	Wire diameter 76mm x 1500 m length
Towing Pins	1 x Karmoy Retractable SWL 200 tonnes
Shark Jaws / Karm Fork	1 x Karmoy Retractable SWL 350 tonnes
Stern roller Manabe Zoki	Dia. 2m x Length 4.5m SWL 350 tonnes

## DECK MACHINERY AND MOORING EQUIPMENT

Recovery / Tugger Winch	2 x SWL 20 te RECW3-20/610 Dia 26mm x 200m
Capstan	2 x SWL 10 te HCAS-10/450 Electro Capstan
Deck Crane	1 x SWL 2t @14m Hyd Telescopic TTS GPT 80-2-14
Anchor Windlass	1 x SWL 10te F3236-W210 double gypsy windlass with 2 warping drum
Anchor Chain	2 x dia 38 mm x 880 m U3 studlink anchor chain
Anchor	2 x AC14 HHP 1710Kg Anchor

## BRIDGE NAVIGATION EQUIPMENT

S-Band Radar 10cm ARPA28	1 x Furuno FAR 2117S
X-Band Radar 3cm ARPA28	1 x Furuno FAR 2137S
Auto Pilot cw rudder Indicator	Tokimec PR-6000
Magnetic Compass	2 x Tokimec SH-165A1
Gyro Compass	Tokimec TG-8000 /8500
Echo Sounder	Furuno FE-700 with repeater FE--720
AIS	Furuno FA-150
Navtex	Furuno NX-700 with printer NX-700A
Weather Fax	Furuno FAX-410
Wind Vane Anemometer	Nippon Electric N-52+8205
Doppler Speed Log	Furuno DS-80
DGPS	FURUNO MD-550
GPS	2 x FURUNO GP-150
ECDIS (Multi function display)	TRANSAS Navi-Sailor 4000

## BRIDGE COMMUNICATION & MONITORING EQUIPMENT

IMMARSAT Comm C	Furuno FELCOM 15
Marine SSB Radio system	Furuno FS2570C / HS2001
VHF DSC	2 x Furuno FM8800S
Portable VHF (GMDSS)	3 set ENTEL HT649
EPIRB 406 / 121.5 mhz /Sart	THRANE SE406-11 / Ocean Signal S100
Potable VHF (fire fighting)	2 ENTEL HT944
Portable VHF Radio	5 x Motorola GP328
Towing & Anchoring Handling	Fukushima Control Panel
Loud Hailer TalkBack System	Nippon Hakuyo OHE-3167A
CCTV surveillance system	Anchor Handling & Bridgwatch
Auto Telephone	Nippon Electronic OAE-7116
BNWAS System	Tokyo Keiki ADO-001
V-SAT Ku Band Intellian V85 with 1024/ 512 MIR 128/64 CIR	

## FIRE FIGHTING CAPABILITY - ABS FiFi Class 1

Main Ship Fire Pump	1 x 75m3/h @90m head
Emergency Fire Pump	1 x 40m3/h @50m head
Dual Foam/Water Monitor	2 x 600m3/h @120m
Ext Fire Pump Jason SRG256K01	1 x 1200m3/h @140M head
Aker Kvarner JASON Eureka Fire Fighting 1/2 system	
Foam (Fire fighting) Tank	13 m3
Water Curtain Spray System	Accommodation & main deck
Consilium NSAC-1 Fixed Fire Fighting CO2 system	

## LIFE SAVING AND STANDBY RESCUE CAPABILITY

Fitted in Compliance with IMO SOLAS (1974) Approved	
NDA16 SWL 21kN Launching & Recovery System for MOB/FRC	
NDA16 Davit with 6-pax Norsafe MK II Rigid Fast Rescue Boat	
NDA16 Davit with 6-pax Norsafe MK I Rigid Work Boat	

## ANTI POLLUTION & SALVAGE CAPABILITY

Dispersant Storage Capacity	13 m3
Dispersant Spray Boom 6Mtr	2 Set
Emergency Anti Pollution Kit	1 set
External Oil Recovery System	Optional IMO TIER 1 Capability

## ACCOMMODATION & FACILITIES

Namirei Showa NSAS-W4004A Airconditioning System for 36 Persons	
16 Cabins : 6 Single Berth; 5 x 2 Berth; 5 x 4 berth c/w Ensuite Bathroom	
1 Hospital cw 2 x Single Berth , Ship Office, Instrument Room	
Galley, Mess Room, Recreation Room, Gymnasium Room	
Dry Provision Store, Cold Room & Freezer Room	
1 x Laundry Room ; 1 x PPE Change Out locker Room	

## ENVIRONMENTAL IMO MARPOL COMPLIANCE

Taiko Kikai SBT40 SCT-200P Sewage Treatment Plant	
15-ppm Taiko Kikai USH-05 Oily Water Separator of 0.5m3/hr	
Water Maker Sasakura KE-15 15 m3/day	
Alfa Laval SA821 fuel Oil Purifier Self Sludge Discharge	
Anti Air Pollution Engines Exhaust System	
Salvage Wreck Recovery & Oil Spill containment Capability	