

72m DP2 PSV FOR PRIVATE SALE

DWT: 3250 MT

Design: UT 755 L

Built: 2008

Fi-Fi 1 Classed

Main Deck Space: 680m²





DP2 PSV

Vessel is a 2008 built PSV of UT 755 L design. This UT 755 L design is proved to be one of the most successful PSV designs in the offshore history with several hundred of these type vessels operating globally, a truly tried and tested vessel design. This vessel has built up a track record of operations in several global hubs. The vessel represents reliability fulfilled by a vessel that has repeatedly proven to be of a size and range that best suits offshore operations.

Technical data



GENERAL

Built / Yard	2008 / Cochin Shipyard Ltd.
Design	UT 755 L
Classification Society	DNV-GL
Class notation	+1A1, Fire Fighter 1, SF, EO, DYNPOS-AUT, CLEAN DP2
Flag	TBD
IMO no.	TBD
MMSI	TBD
Call Sign	TBD

PRINCIPAL DIMENSIONS

LOA	72.00 m
LPP	66.80 m
Breadth Moulded	16.00 m
Depth Moulded	7.00 m
Summer/Max Draft	5.82 m
Displacement	4956 mt
NRT	1036 mt
GRT	2160 mt
DWT	3250 mt

MACHINERY & POWER

Power	5450 bhp
Main engines	2 x Bergen Engines 9 KR, 2725 BHP
Bow Thrusters	2 x Rolls Royce TT1650 DP CP, 800 BHP
Stern Thrusters	1 x Rolls Royce TT1650 DP CP, 800 BHP
Auxilliary Generators	2 x 250 kW
Emergency Generator	1 x Caterpillar C4.4

DYNAMIC POSITION SYSTEM

DP System type	1 x K Pos 21 – DP OS2 KONGSBERG
DGPS	2 x DGPS (DPS116,DPS200)
Diff correction	FUGRO SEASTAR
Optical	Fanbeam
Radar Based	N/A
Transponders	N/A
HPR	N/A

NAVIGATION EQUIPMENT

X-band Radar	2xJRC JMA 9110 6XA
S band Radar	JRC JMA 9932 6XA
Electronic chart system	N/A
Autopilot	Tokimec Inc. Pr-6114A-22
GPS	DGPS JRC JRL-77MK2
Echosounder	JRC JFE 585
Navtex	JRC NCR 333
Standard Compass	LILLEY & GILLIE MK2000
Gyro Compass	Tokimec Inc. – TG 8000
Wind sensor	2 x Gill Ultrasonic
AIS	JRC JHS - 182
Speed log	JRC JLF 205

PERFORMANCE

Max Speed	14.3 knots
Service Speed	11 knots
Eco Speed	9 knots
Consumption Max Speed	22.7 m3/day
Cons. Service Speed	19.3 m3/day
Consumption Eco Speed	13.4 m3/day
Consumption on DP	8.4 m3/day
Consumption Standby	5.7 m3/day
Consumption at anchor	1.5 m3/day

Technical data

CARGO DECK

Deck area	680 m2
Deck load	1600 mt
Deck Strength	5 mt/m2
Reefer outlet capacity	4 x Reefer pluds. 2 x 440V + 2 x 220V
Deck crane	1 x SWL 3 mt @ 10-16m Outreach

TANK CAPACITIES / EQUIPMENT

Fuel Oil	973 m3 / 6120 bbls
Pot Water	900 m3 / 5661 bbls
Drill/Ballast Water	1265 m3 / 7957 bbls
Mud	997 m3 / 6271 bbls
Brine	398 m3 / 2503 bbls
Base Oil	207 m3 / 1302 bbls
Methanol	N/A
Dry Bulk	320 m3 / 11299 cuft (5 tanks)
Slop	6.6 m3
Washing System	N/A

DISCHARGE CAPACITIES

Fuel Oil	200 m3/hr @ 9 bar
Pot Water	200 m3/hr @ 9 bar
Drill/Ballast Water	200 m3/hr @ 9 bar
Mud	2x75 m3/hr @ 18 bar
Brine	75 m3/hr @ 18 bar
Base Oil	150 m3/hr @ 9 bar
Slop	5 m3/hr @ 2 bar

FIFI / DISPERSANT SYSTEM

FiFi Type	Fire Fighting Systems – External Fi-Fi
FiFi Class	Fi-Fi Class 1
Water Monitor Type	2 x FFS 1200 LB
Water Monitor Capacity	1200m3/hr @9.8 bar
Height/Length of Throw	50 m / 120m
Fire Pump Capacity	2 x 1533 m3/hr

TUGGER / CAPSTAN / WINDLASS

Tugger winch type / capacity	2 x Brattvaag 10 mt
Capstan type / Capacity	2 x Brattvaag 8mt
Windlass	Brattvaag N-6270

LIFE SAVING EQUIPMENT

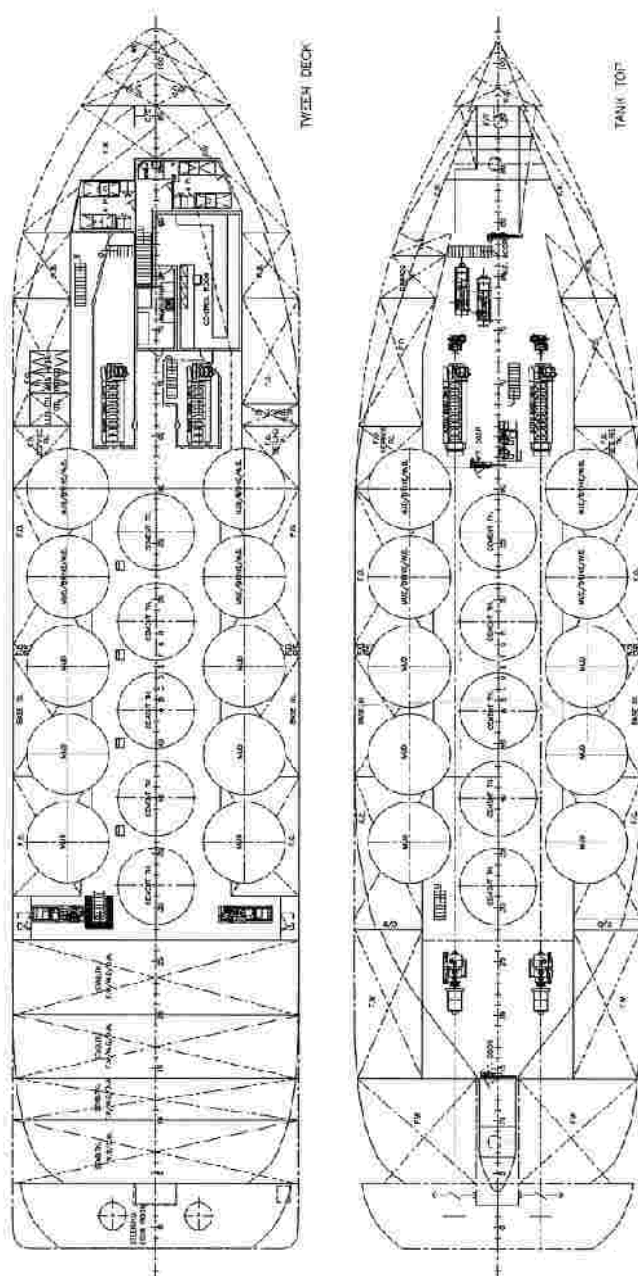
MOB / Rescue Boat	1 x VIKING
Liferafts	4 x VIKING
Lifejackets	22
Immersion/Survival Suit	22
Emergency Beacon	2 x JRC VHF 406 MHz
Hospital	Yes

ACCOMODATION

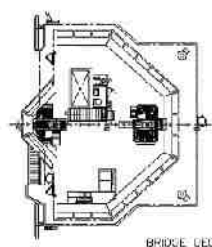
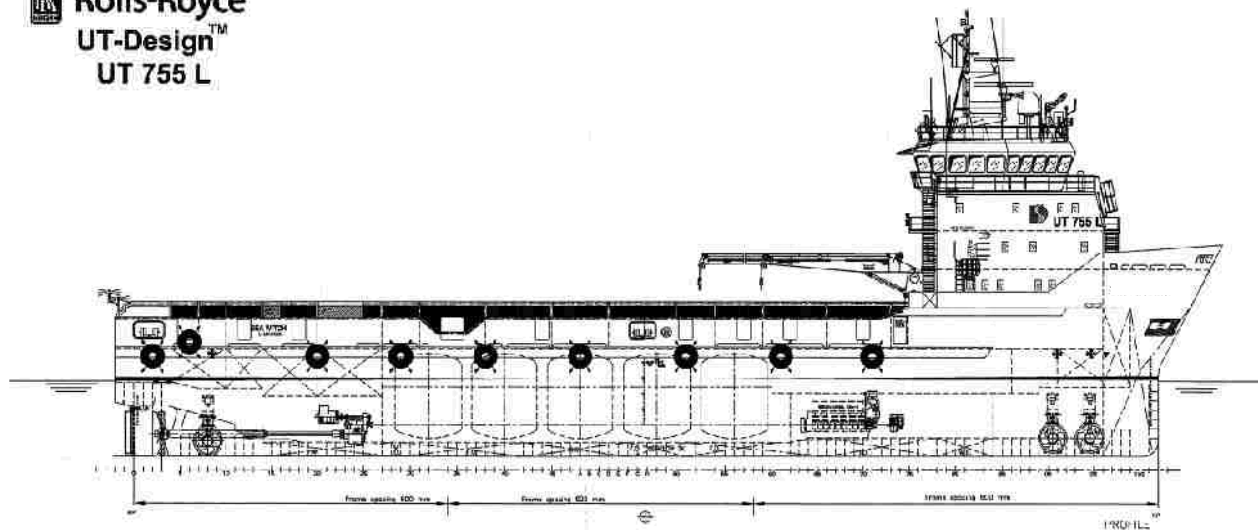
Total numer of bunks	32
1 Man Cabin	4
2 Man Cabin	8
3 Man Cabin	Nil
4 Man Cabin	3
Mess Room /	1 mess room,
Rec Room	1 day room



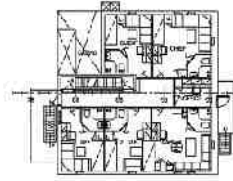
TANK LAYOUT & CAPACITIES



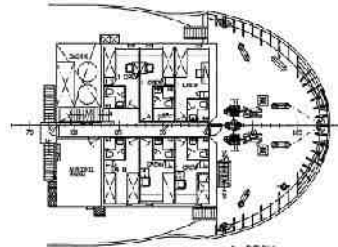
Tank name	Volume (m3) - 100%	Fuel oil (0.9)	FW (1,000)	DW (1,000)	BW (1,025)	Liquid mud (2,500)	Brine (2,500)	Base oil (0.830)	Dry Bulk (2,400)
FOREPEAK	106,50			106,50	106,50				
DB/WING TK 2 (SB)	69,50			69,50	69,50				
DB/WING TK 2 (PS)	50,70			50,70	50,70				
TANK 1 (SB)	99,60			99,60	99,60	99,60	99,60		
TANK 1 (PS)	99,60			99,60	99,60	99,60	99,60		
TANK 2 (SB)	99,80			99,80	99,80	99,80	99,80		
TANK 2 (PS)	99,80			99,80	99,80	99,80	99,80		
STAB TK NO 1	189,80		189,80	189,80	189,80				
STAB TK NO 2	170,00		170,00	170,00	170,00				
STAB TK NO 3	112,20		112,20	112,20	112,20				
STAB TK NO 4	167,60			167,60	167,60				
DB/WING TK 1 (SB)	108,20		108,20						
DB/WING TK 1 (PS)	100,10		100,10						
WING TK 7 (SB)	65,00		65,00						
WING TK 8 (SB)	33,40		33,40						
WING TK 8 (PS)	33,40		33,40						
DB/WING TK 7 (C+PS)	88,10		88,10						
DB/WING TK 3 (SB)	167,10	167,10							
DB/WING TK 3 (PS)	154,90	154,90							
DB/WING TK 4 (SB)	139,50	139,50							
DB/WING TK 4 (PS)	139,50	139,50							
DB/WING TK 6 (SB)	138,90	138,90							
DB/WING TK 6 (PS)	138,90	138,90							
FO SETTLING TK (SB)	41,70	41,70							
FO SETTLING TK (PS)	41,70	41,70							
FO SERVICE TK (SB)	10,80	10,80							
TANK 3 (SB)	99,80					99,80			
TANK 3 (PS)	99,80					99,80			
TANK 4 (SB)	99,80					99,80			
TANK 4 (PS)	99,80					99,80			
TANK 5 (SB)	99,80					99,80			
TANK 5 (PS)	99,80					99,80			
DB WING TK 5 (SB)	103,80							103,80	
DB WING TK 5 (PS)	103,80							103,80	
CEMENT TK 1	64,00								64,00
CEMENT TK 2	64,00								64,00
CEMENT TK 3	64,00								64,00
CEMENT TK 4	64,00								64,00
CEMENT TK 5	64,00								64,00
Total		973,00	900,20	1265,10	1265,10	997,60	398,80	207,60	320,00
Weight (MT)		875,70	900,20	1265,10	1296,73	2494,00	997,00	172,31	768,00



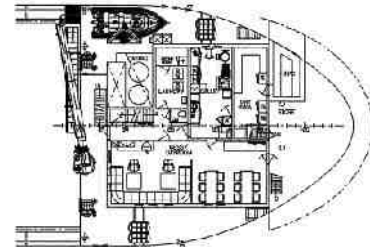
BRIDGE DECK



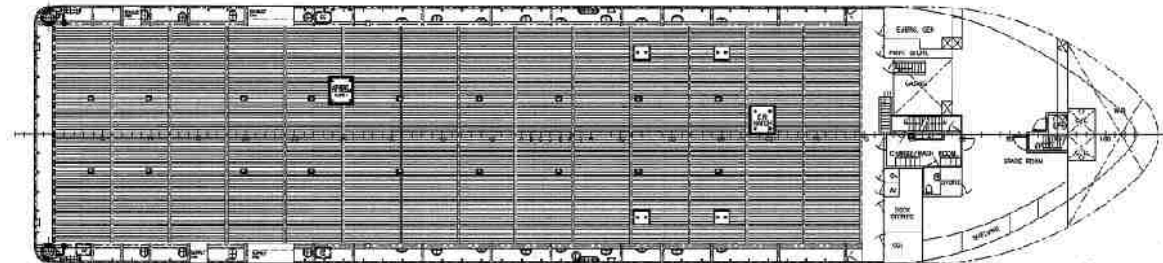
D-DECK



A-DECK



FORCASTLE DECK



MAIN DECK