



#### PRINCIPAL PARTICULARS

Class : ABS  
 Classification : ABS + A1 (E) \* Towing & Offshore Support Vessel" + AMS  
 IMO No. :  
 Year Built : 2013  
 Flag : TBD  
 Port of Registry : TBD

#### MEASUREMENT

Length Overall : 52.80 m  
 Length BP : 48.42 m  
 Breadth Moulded : 13.20 m  
 Depth Moulded : 5.20 m  
 Draft (Max) : 4.50 m

#### TONNAGE

GRT : 1159 MT  
 NRT : 347 MT  
 Deadweight : 930 dwt

#### MACHINERY

Main Engine : 2 x 2,200 BHP Cummins  
 Auxiliary Generator : 3X 315KW Cummins  
 Emergency Genset : 1X 65KW Cummins  
 Bow Thrusters : 1 x 5.0 MT Shottel  
 Steering Gear : Electro-hydraulic type  
 Propulsion : 2 X FPP  
 Rudders : 2 X Conventional Rudder

#### DECK EQUIPMENT

Windlass : 1 X Electro-hyd for Ø 34mm rated  
 Anchor : 2X 1140kg High Hold Type Bow  
 Anchor Chain : 412.5 X Ø 34mm Port and Stbd  
 Capstan : 2X 5 MT @ 15m/min  
 Tugger Winch : 2X 10 MT @ 15 m/min  
 Storage Reel : 1X Ø 52mm X 1000M  
 Deck Crane : 1 X 3 MT @ 14m

#### CARGO CAPACITY

Deck Cargo : 520 MT  
 Deck Strength : 7 MT/m<sup>2</sup>  
 Clear Deck Space : 275 m<sup>3</sup>  
 Fuel Oil : 550 m<sup>3</sup>  
 Fresh Water : 350 m<sup>3</sup>  
 Ballast/Drill Water : 290 m<sup>3</sup>  
 Freezer : 6 m<sup>3</sup>  
 Chiller : 6 m<sup>3</sup>  
 Foam : 4.42 m<sup>3</sup>  
 Detergent : 4.42 m<sup>3</sup>

#### DISCHARGE RATES

Fuel Oil : 1 X 100 m<sup>3</sup>/hr @ 75m head  
 Fresh Water : 1 X 100 m<sup>3</sup>/hr @ 75m head

#### SPEED/BOLLARD PULL/FUEL CONSUMPTION

Speed : 12.5 kt  
 Bollard Pull : 57 MT  
 Type of Fuel : MGO

#### TOWING & ANCHOR HANDLING EQUIPMENT

Tow/AH Winch : Double Drum, Waterfall Type  
 Upper Drum - (Ø)52mm X 1000m (Towing)  
 Lower Drum - (Ø)52mm X 1000m (Anchor Handling)  
 Remote control from aft control stand in wheelhouse  
 Tow/AH Pull (1<sup>st</sup> Laver) : 100 T X 0~6m/min (low Speed)  
 : 45.5T X 0~12m/min (Mid Speed)  
 : 20T X 0~24m/min (High Speed)  
 Braking Capacity : 180MT  
 Stern Roller : Ø1.6m X 5m length, SWL 200MT  
 Shark Jaws : 1 X 200MT SWL  
 Tow Pins : 1 X electro-hyd, SWL 200MT

#### NAVIGATION & COMMUNICATION EQUIPMENT

GMDSS : Sea Area A3 Sailor  
 MF/HF SSB : 1 set Sailor  
 SART : 2 set Sailor  
 Inmarsat C : 2 set Sailor  
 EPIRB : 1 set Sailor  
 Portable VHF Radio : 2 set Sailor  
 Navtex : 1 set JRC  
 Radar : 2 set JRC  
 Echo Sounder : 1 set JRC  
 GPS Navigator : 2 set Koden  
 Gyrocompass : 1 set Raytheon  
 Autopilot : 1 set Raytheon  
 Weather Fax : 1 set JMC  
 Speed Log : 1 set Ben  
 Magnetic Compass : 1 set Liley

#### EMERGENCY RESPONSE & FIRE FIGHTING

##### EXTERNAL

FiFi : 1/2 fifi  
 Fire pump : 1 X 1200m<sup>3</sup>/hr  
 Fire monitor : 2 X 600m<sup>3</sup>/hr

##### INTERNAL

Fixed System in E/R : CO2 system in engine room  
 Fire Detection System : All living spaces and engine room

##### OTHERS

Rescue Zone : Port and Stbd Main Deck

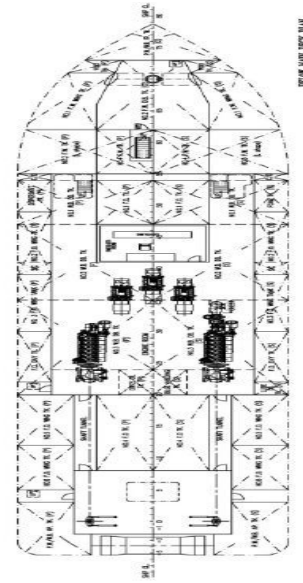
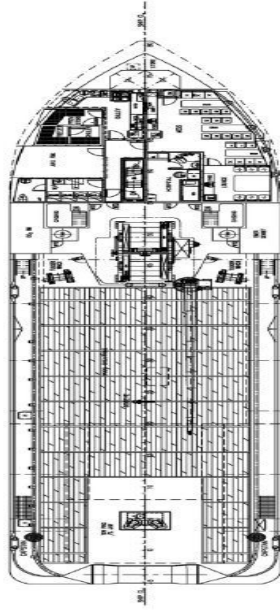
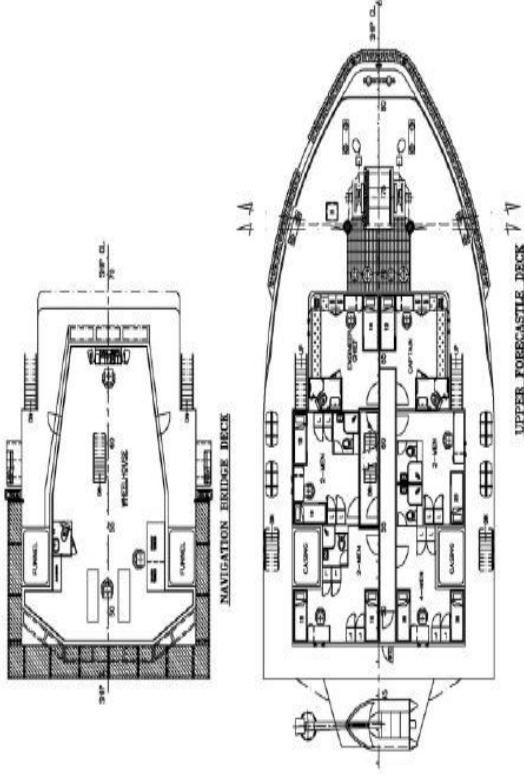
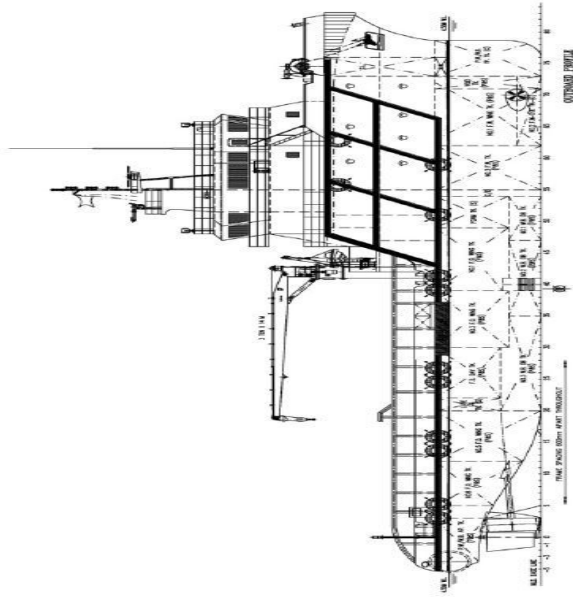
##### LIFE SAVING APPLIANCE

Search lights : 2 X 2000W  
 Floodingts : 6 X 1000W  
 Life Rafts : 6 X 20 persons Port & Stbd  
 Life Buoys : 8 pcs  
 Life Jackets : 49 pcs  
 Immersion Suit : 41 pcs  
 Rescue Boat : 1 X 6 men c/w 25HP motor and davit launching  
 Parachute Distress : 12 Units, SOLAS Type  
 Emergency Escape : 10 sets with containers  
 Breathing Device : TBA

#### ACCOMMODATION

Berths : 3 X 1 berth cabins = 3  
 : 3 X 2 berths cabins = 6  
 : 7 X 4 berth cabins = 28  
 Total : 40  
 Hospital : 1 X 1 berth cabin

All cabins are fully air-conditioned



TITLE:  
**GENERAL ARRANGEMENT**

PROJECT:  
**52.8M ANCHOR HANDLING/UTILITY/SUPPLY VESSEL**

**PRINCIPAL DIMENSIONS**

- LENGTH OVERALL : 52.80 M
- LENGTH WATERLINE : 50.36 M
- LENGTH BET. PERP. : 47.20 M
- BREADTH MOULDED : 13.20 M
- DEPTH MOULDED : 5.20 M
- DESIGN DRAFT MOULDED : 4.50 M
- COMPLEMENT : 40 MEN
- WATER BALLAST : 290.0 M3
- FUEL OIL : 550.0 M3 (SUBJECT TO DESIGN REVISE)
- FRESH WATER : 350.0 M3
- POWER (FPP) : 2 X 2200BHP
- CLEAR DECK AREA : 275 M3
- SPEED (TRIALS) : 12.5 KNOTS
- BOLLARD PULL : 55 TONS

- : 52.80 M
- : 50.36 M
- : 47.20 M
- : 13.20 M
- : 5.20 M
- : 4.50 M
- : 40 MEN
- : 290.0 M3
- : 550.0 M3 (SUBJECT TO DESIGN REVISE)
- : 350.0 M3
- : 2 X 2200BHP
- : 275 M3
- : 12.5 KNOTS
- : 55 TONS

This drawing and the information contained herein is supplied on the understanding that they are the exclusive property of HARPS Marine and Logistics Services Ltd. They must not be used or reproduced in