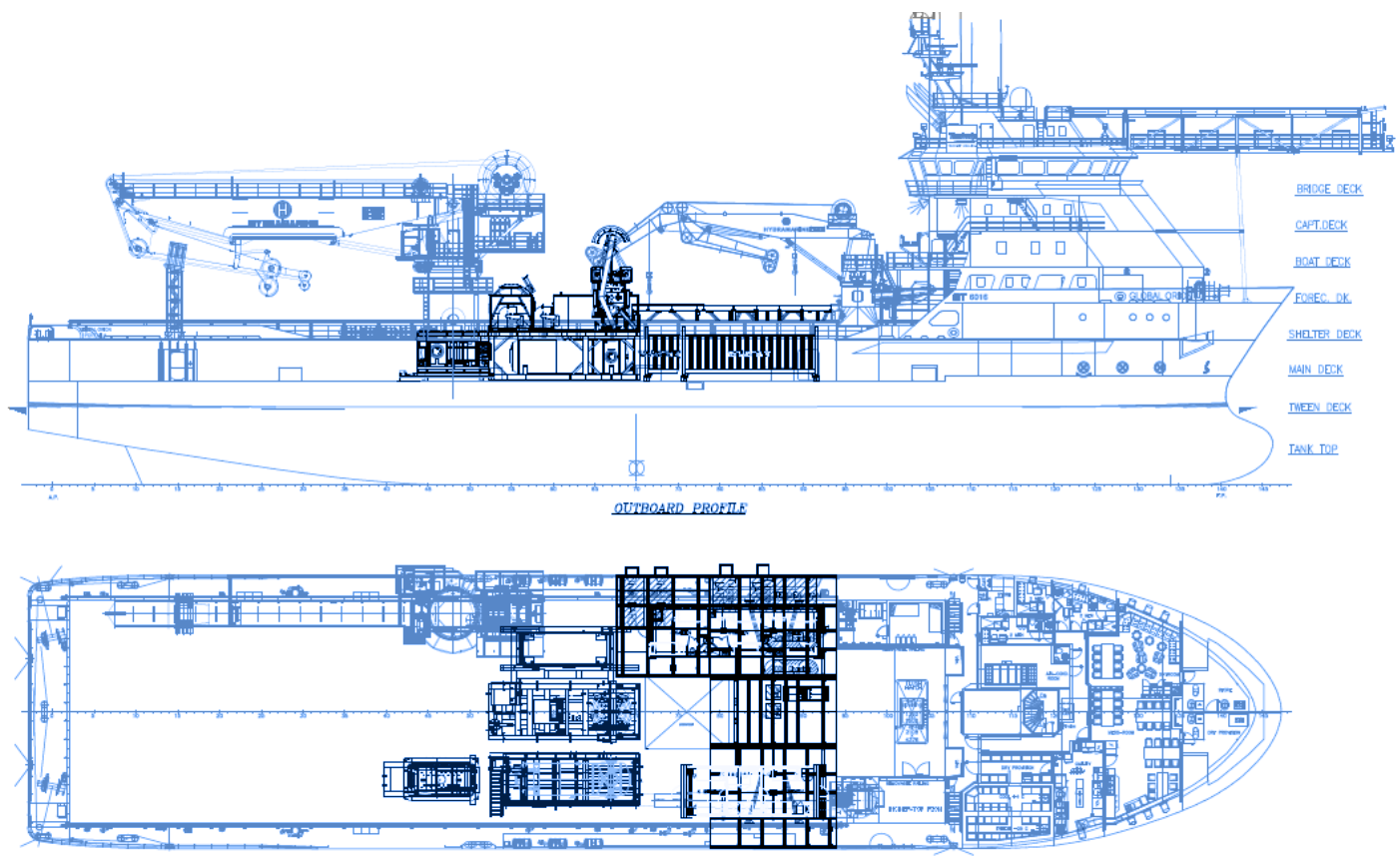


DP2 MULTI SERVICE VESSEL (MSV)



Vessel is designed for diving and ROV support, as well as performance of field development and SURF works including, but not limited to:

- > Subsea Field Development
- > Subsea Construction
- > Subsea Inspection, Repair, and Maintenance
- > Deepwater Lowering
- > Flying Lead Installation
- > Installation of PLETs and Manifolds
- > Installation of Subsea Trees
- > Install Rigid and Flexible Jumpers
- > Installation of Rigid and Flexible Flowlines
- > Installation of Umbilicals, Umbilical Termination Assemblies, etc.
- > Pipeline and Umbilical Installation Support
- > Subsea Well Intervention
- > Subsea Plug and Abandonments
- > Installation of Suction Piles and Other Anchoring/ Mooring Systems
- > Diving and ROV Surveys
- > Subsea Salvage Programs
- > Platform and Pipeline Inspections
- > Installation of Subsea Acoustics/Survey Equipment
- > Mattress Installation
- > Site Clearance Surveys
- > Platform Repairs
- > Installation of Hot Taps, Anodes, Clamps, Risers, etc.
- > Pipelines Tie-Ins



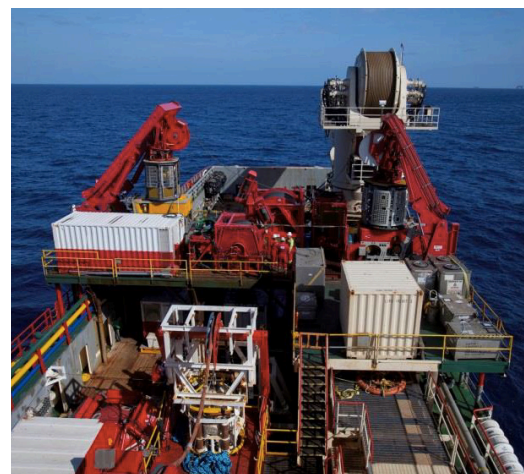
DIVING, INSPECTION, CONSTRUCTION, AND ROV SUPPORT

The vessel has a length of 91 m (298 ft), beam of 19.7 m (65 ft), a 165 s. ton (150 Te) AHC crane, accommodations for 122 people, and a Sikorsky S-92 class helideck.

The ship is equipped with a fully integrated diesel electric propulsion system and prepared for worldwide operations. She has a clear deck area of 601 m² and a 6 m x 5.25 m moonpool. The HOSS-001 Saturation System on board is a DNV classable and IMCA compliant, 1000ft rated saturation diving system with Hyperbaric Rescue Chamber, 3 man bell and Hyperbaric Rescue Facility. Can also be equipped with a work class ROV. Below deck the vessel is arranged for a wide array of liquid cargo categories.

SPECIFICATIONS

Length (overall)	298.6 ft (91 m)
Length between perpendicular	270.3 ft (82.40 m)
Breadth Moulded	64.6 ft (19.7 m)
Depth Main Deck	24.4 ft (7.45 m)
Draft Midship (max)	20.7 ft (6.3 m)
Type	MT6016
Design	Marin Teknikk
Classification	ABS classed DP2
Year Built	2002
Registry (flag)	TBD
Operating Draft (min/max)	14.1 ft (4.3 m)/20.7 ft (6.3 m)
Tonnage (gross/net)	4023/1311
Max Deck Load	5 t/m ²
Free Deck Area	601 m ²
Moon Pool	19.6 ft (6 m) x 17.2 ft (5.25 m)
Accommodations	122 people
Hospital Beds	2
Transit Speed (econ/max approx.)	9/11 kts
Helicopter Max rating	Sikorsky S-92
Helicopter Refueling Capacity	N/A
Helideck Dimensions	69 ft (21 m) x 69 ft (21 m)
DP Mode Fuel Consumption	6 m ³



Communication Systems

(1) SSB-Furuno FS 150W, (1) Immarasat Mini M, V-SAT, VHF, UHF, Harris Caprock network communications, Phone/Fax/Email

Main Crane

Derrick	
Make/Model	Hydramarine
Make/Type	AHC Knuckle Boom
Boom Length	
Main	75 ft (23 m)
Knuckle	33 ft (10 m)
Capacity	
Main Revolving to 1500 m	165 s. Tons (150 tonnes)
Whip	16.5 s. Tons (15 tonnes)
Heave Compensated	Active & Passive

Auxiliary Crane

Make/Model/Type	(1) Hydramarine
Boom Length	49 ft (15 m)
Capacity	27.5 s. Tons (25 tonnes)

Navigation

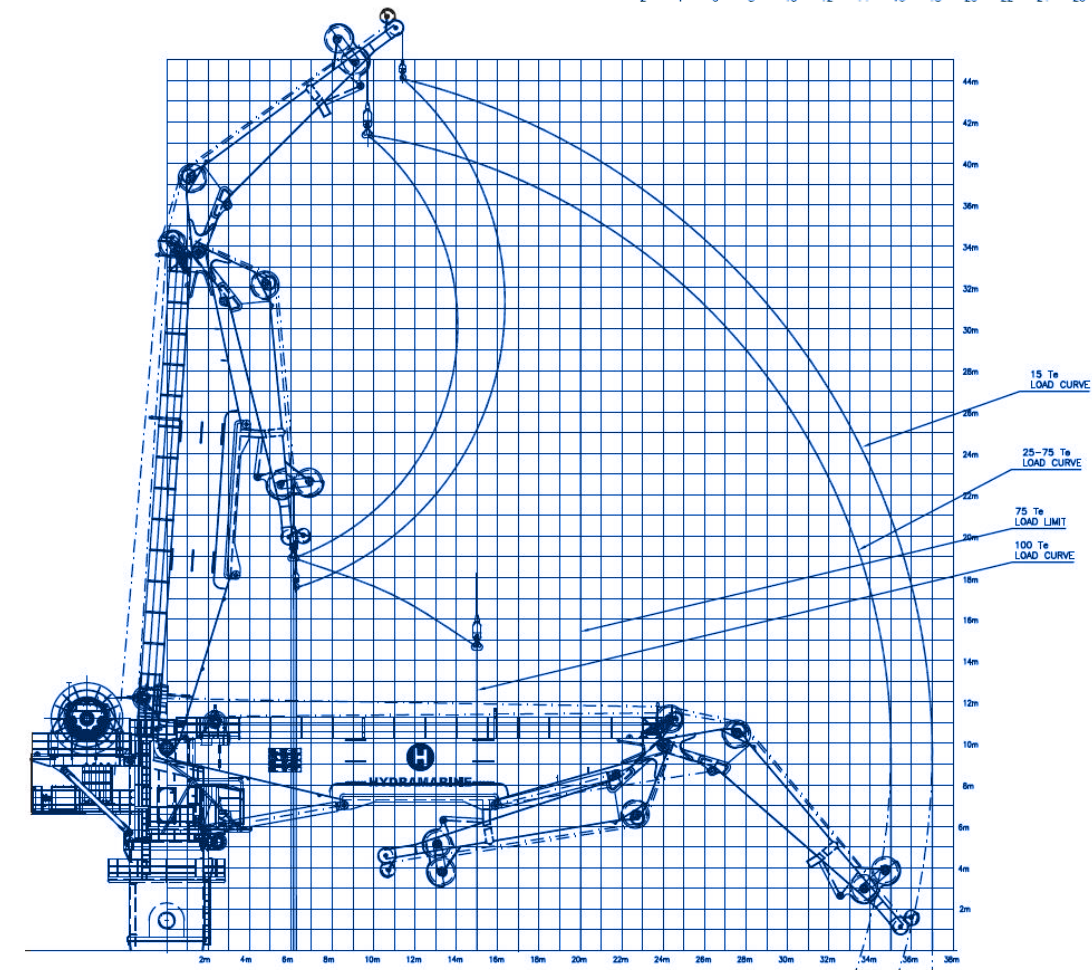
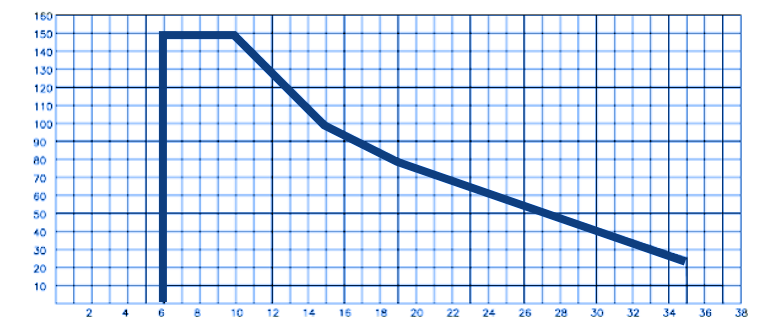
Electronic Chart System, Fugro GPS, Echo Sounder, Voyage Data Recorder, BNWAS and LRIT

Mooring Equipment

No. of Anchors; WT 2
Make, Type SPEK

Diving Systems

The HOSS-001 is a DNV classable and IMCA compliant 12-man, 3 man bell, 1,000 ft rated saturation diving system with a Hyperbaric Rescue Chamber. Additionally, the vessel has a surface diving package with dual surface diving launch and recovery systems (LARS).



Machinery

Main Engines	(5) Caterpillar 9500 kW
Main Generators	(5) Siemens, 9100 kW
EM/Harbour	370 kW/1800 RPM
Water Makers	9,275 gal (35m ³ /day)

Bunker Capacity

Fuel	409,730 gal (1551m ³)
Fresh Water	254,398 gal (963m ³)

Dynamic Positioning

DP Class	2
DP System	Kongsberg Maritime AS, SDP21
Main Prop Thrusters	(2) 2200 kW Aquamaster azimuth
Retractable Thruster	Rolls Royce, UL 1201, 883 kW
Tunnel Thrusters	(2) Rolls Royce, TT 2200 DPN, 883 kW