



CIMC-3060 WIND TURBINE INSTALLATION VESSEL

KEY FEATURES

- 10,000t Variable load
- 4,800m² Cargo deck area
- 2,200t @ 24m, 1,250t @ 40m, Leg encircling type crane
- Max. 120 persons on board, based on 24 single person cabins and 48 double person cabins.
- DP2 positioning system

The CIMC 3060 WTIV is a self-propelled jack-up vessel destined for large off-shore wind turbines related operations worldwide. The outlined specification shall be suitable for nowadays large operation.

The vessel is designed for carrying one of following scenario, 4 sets of 12 MW turbines or 3 sets of 15 MW turbines.

CIMC 3060 WTIV BROCHURE

Designer..... **CIMC RAFFLES**

Jacking System.....



GENERAL

Category: Jack-up Vessel
Class: CCS & ABS or DNV
Notation:
★ CSA Self-Elevating Offshore Wind Turbine
Service Unit/Crane Unit; Lifting Appliance; Load
Computer(S,I); PSPC; Ice Class B; IWS; G-ECO
(BW (T) , VIB1, NO1
★ CSM AUT-0; DP-2

PRINCIPAL DIMENSIONS

Length overall: 133.00 m
Breadth mid.: 53.00 m
Moulded Depth: 11.00 m
Design draft: 6.73m
Free Deck Space: 4,800 m²
Variable Load: 10,000 t
Max. Deck Load: 15
t/m²
Max. Water Depth: 70 m

DESIGN ENVIRONMENT

Air temperature: -20°C ~ 40°C
Humidity: 30% to 70%
Seawater Temperature: 0°C to 32 °C

LEG

Number: 4
Type: Triangular truss type
Chord distance: 9.0 m
Length overall: 120.5 m(Incl. spudcan)

JACKING SYSTEM

Type: Fixed, opposed rack and pinion
Drive: Electric VFD
Jacking capacity for one leg: 9,540mt
Number of pinions: 144
Jacking speed, hull lifting: 0.5m/min
Jacking speed, leg handling: 0.8m/min

CRANE

Main Crane:
Main Hook: 2,200 t @ 18~24 m
1,200 t @ 40 m
Lifting Height: 160 m (above deck):
Aux. Hook: 400 t @ 42 m
Lifting Height: 188 m (above deck):
Auxiliary Crane:
Main Hook: 300 t @ 20 m
Aux. Hook: 32 t @ 65 m

SPUDCANS

Number: 4
Type: Polygon type
Footing area: approx. 230m² each

POWER PLANT

Main Power: Diesel Engines 6 X 3,380 ekW
50Hz, Tier III with SCR
Harbor Power: 1 X 800 EkW
50Hz, Tier III with SCR
Emergency Power: 500 ekW

PROPULSION

Main Propulsion: 3 x Azimuth Thrusters 3,500kW
Bow Thrusters: 3 x 1,660 kW
Transit Speed: 9 kn

ACCOMMODATION

Total POB: 120 persons
Heli Deck: S61N/S92A

POSITIONING SYSTEM

Positioning system: DP-2

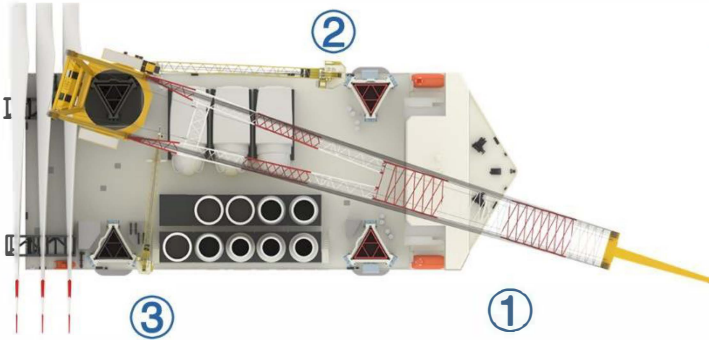
DESIGN LIFE

Design Life: 25 Years



FEATURES

Design feature – Main deck layout

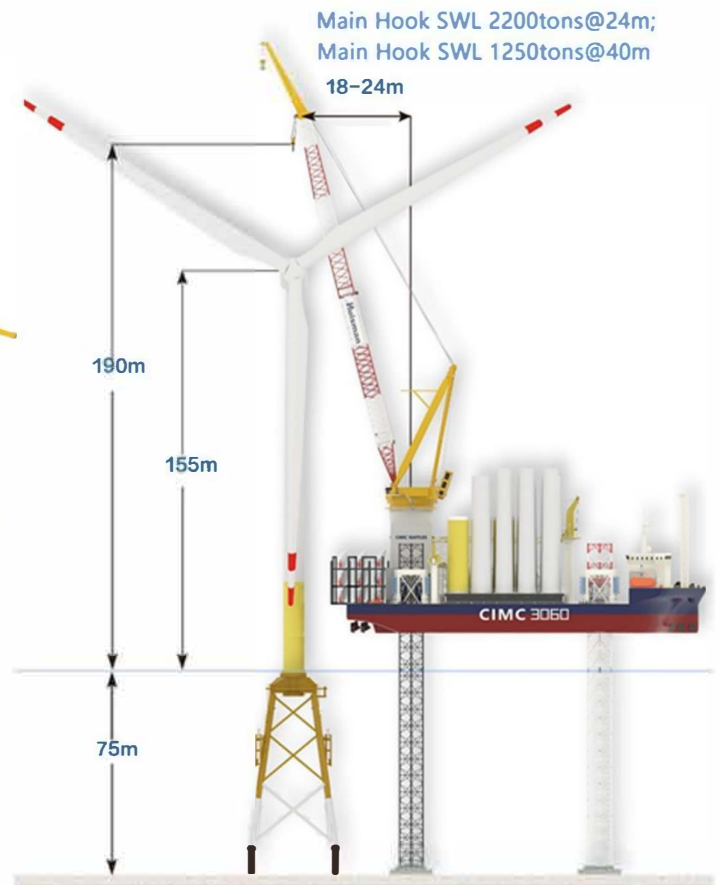


Unobstructed Large Open Main Deck Area

- ① Main crane: LEC 2200 tons
- ② Auxiliary Crane 1: 300 tons
- ③ Auxiliary Crane 2: 50 tons

Open deck area: 4800 m²
To accommodate up to four (4) sets GE 12MW WTG, as well as corresponding WTG sea fastening facilities

GE Haliade-X 12MW Matching Analysis



DELIVERY SCHEDULE



Barge Launching on Aug. 8th 2023, Delivery in Feb. 2024 with full package ready for mobilization.