



# 40m Aluminum Crew/Utility Boat

## GENERAL

SHIP TYPE: 40M Aluminum Crew/Utility Boat  
 DESIGN CRITERIA: All welded aluminum Monohull with quadruple propellers/twin rudders. Forward fully air conditioning crew accommodation/passenger salon. And flush, no-obstructed cargo deck  
 SAFETY REGULATION: ABS and Flag state requirements  
 CLASSIFICATION: ABS+A1 HSC Crewboat +AMS

## MAIN DIMENSIONS

LENGTH O.A.: 40.00 m  
 BEAM: 8.20 m  
 Moulded Depth: 3.65 m  
 Moulded Draft: 2.0 m  
 SUMMER Freeboard: 1.65 m

## CARGO DECK

CLEAR DECK SPACE: 115 m<sup>2</sup>(18.0m length x 6.4m width)  
 SAFE DECK LOADING: 85 tonnes  
 DECK STRENGTH: 1.3 t/m<sup>2</sup>  
 DECK CRANE: 0.8Ton@6m  
 REMARK: Adequate cargo retainers and lashing lugs on both sides for securing deck cargo  
 Aft Deck suitable for helicopter winching

## TONNAGE

GRT(Approx.): 292  
 NRT(Approx.): 88  
 Deadweight(Approx.): 170 MT

## MACHINERY

Number of Main Engines: 4  
 Propulsion: Quadruple Screw  
 Make Type: Cummins KTA 38-M2  
 Total BHP/KW: 4 x 1350hp  
 Propellers: 4 Fixed Pitch  
 Bow Thruster: 1 x 90kW

## PERFORMANCE

Service Speed: 25 knots, 85%MCR @ 50MT DWT  
 Max. Fuel Consumption: ab. 1050L/hr  
 Laden Speed: 18 knots, 85%MCR @ Fully loaded  
 Economy Fuel Consumption: ab. 860 L/hr

## GENERATING SETS (AUXILIARIES)

Prime Movers: 2 x 91KW @ 1500RPM  
 Make/Type: Cummins CCF J80 J-W

NOTE: All above information is supplied with faith, but without guarantee.

Generators: CSIC 1FC2 224-4SB43., 2 x 80ekw  
 Vessel Power Supply: 415/240 Volt AC, 50Hz, 3hp +24 Volt DC

## ACCOMMODATIONS

Passenger Capacity: 100 Minda MD200 Economy Class Seat c/w food tray  
 Crew: 10 bunks in 5 cabins  
 Mess: Seating for 10 Crew

## ELECTRONICS AND CONTROLS

GMDSS: GMDSS A2  
 VHF: Furuno FM-8900S+3 TCR TW-50 Handheld  
 SSB Radio: Furuno FS-1575 + I-COM IC-M710 (non GMDSS)

Satellite communication/Fax: NMARSAT FELCOM-250  
 GPS: Furuno GP-170  
 Depth/Echo Sounder: Furuno FE-800  
 Gyro Compass: ANSCHUTZ STD-22  
 Magnetic Compass: SMEC CX-65 (with deviation card)  
 Autopilot System: ANSCHUTZ NP-60  
 Navtex: Furuno NX700B  
 Marine Radar: 2 unit Furuno FAR2117, 19in Display  
 EPIRB: ACR RLB-38  
 SART: ACR PATHFINER3  
 AIS: Furuno FA-150  
 Public Address / Intercom System: FG Double Amplifier 200W x 2  
 Search Lights: 3 units Ceiling Mounted, KESCOM 1000W  
 Chart Plotter: GARMIN GPSMAP5012  
 Anemometer: NINGLU AM-76

## TANK CAPACITY

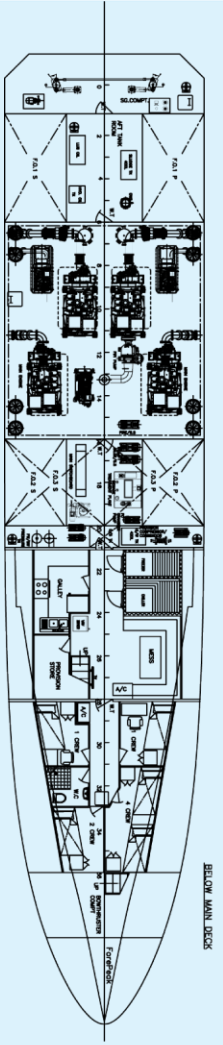
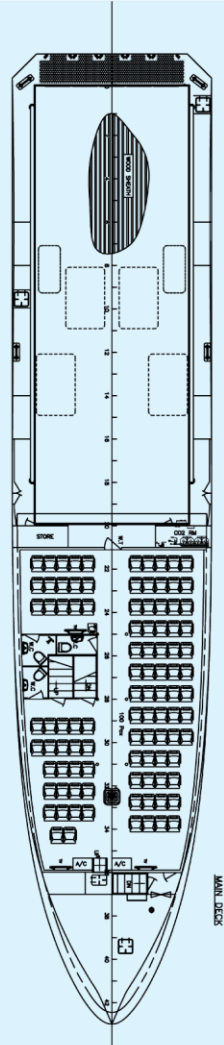
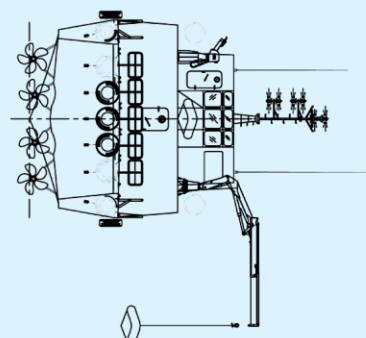
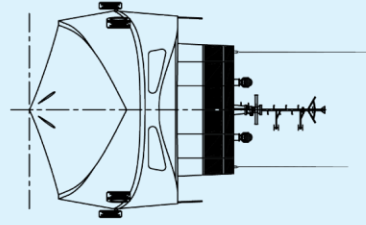
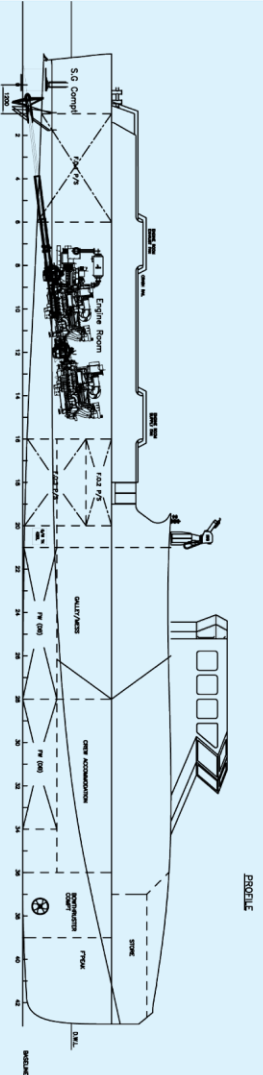
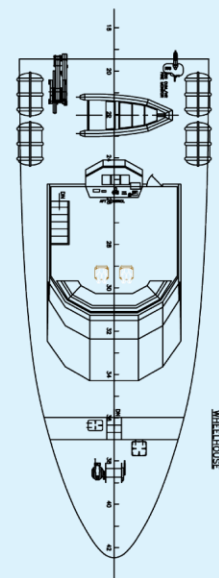
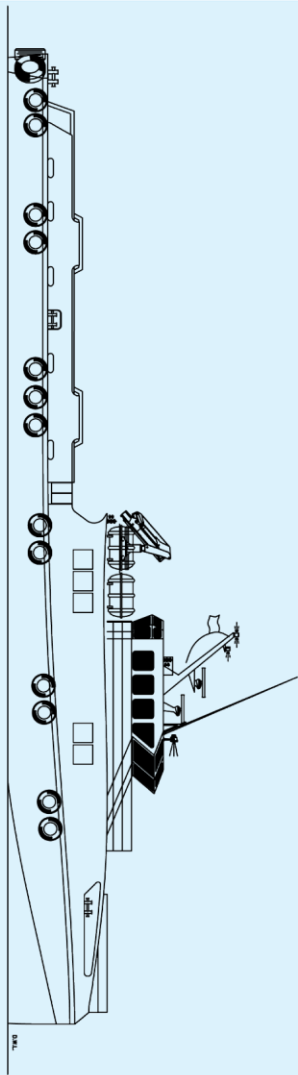
Fuel oil: 105,000 litres  
 Fresh Water: 36,000 litres

## EMERGENCY RESPONSE FEATURES

External Fire Fighting: Quarter FIFI  
 SEP 150x200PC, FFS 600LB Monitor  
 Work boat with 25HP outboard motor  
 Gas Detection Sys.: CONLILIUUM for H2S and Hydrocarbon

## LIFE SAVING EQUIPMENTS

Life Rafts: 6 Rafts (4x50P & 2x65P)  
 Life Buoys: 8 on board per SOLAS  
 Rescue Zone: Yes



PRINCIPAL PARTICULARS

LENGTH O.A.	40.27 M
LENGTH B.P.	38.95 M
BREADTH M.L.D.	8.20 M
DEPTH M.L.D.	3.65 M
DESIGN DRAFT	2.00 M
COMPLEMENT	8 CREW 100 OFFSHORE WORKERS

# 40m Aluminum Crew/Utility Boat