



**Platform Supply Vessel - PSV
3300 SERIES
FiFi 1 / DP2**

Platform Supply Vessel - PSV 3300 SERIES FiFi 1 / DP2

SPECIFICATIONS:

Year built:	2015
Yard:	TBD
IMO Number:	TBD
GT / NT:	3800 / 1100

GENERAL:

Length Overall:	80.1m
Beam:	16.2m
Moulded Depth:	7.5m
Service speed:	13 knots
Summer draft/Design draft:	6.00m/5.00m
Dead weight @ summer draft:	3300T

CLASSIFICATION & NOTATION:

Class:	Bureau Veritas
Notation:	I ∇ Hull • Mach Supply Vessel /Fire Fighting Ship 1 – waterspraying Oil Recovery Ship Flashpoint < 60°C ∇ Unrestricted Navigation ∇ AUT-UMS ∇ DYNAPOS AM/AT R COMF-VIB-3 COMF NOISE-3 CLEANSHIP GREEN PASSPORT
Fire-fighting ship:	Class 1
Flag:	TBD
Port:	TBD

TANK CAPACITIES (SERVICE):

Ballast water:	1460m ³
Fuel oil:	400m ³
Fresh water:	800m ³
Sewage:	26m ³
Lub oil:	13m ³
Foam:	7m ³
Roll reduction:	150m ³

CARGO CAPACITIES:

Free deck Area:	720m ²
Cargo deck strength:	5T/m ²
Drill water:	Combined with ballast water
Fresh Water:	Combined with service fresh water tank

Fuel oil/ Base oil:	920m ³
Liquid mud/ brine (s.g.2.8T/m ³):	865m ³
Dry bulk:	259m ³
Recovered oil (combined):	1500m ³

CARGO HANDLING:

Fuel oil/base oil pumps:	2x 150 m ³ /hr
Fresh water pump:	2x 150 m ³ /hr
Drill water pumps:	1x 150 m ³ /hr
Liquid mud/Brine pumps:	2x 75 m ³ /hr
Dry bulk compressor:	2x 75 t/hr
Liquid Mud system:	Agitators, circulation system, hot-water tank cleaning system

MACHINERY:

Main Engines:	Diesel-Electric, 690 V, 60 Hz
Propulsion Power:	2x Electric motors of 1500 kW each
Azimuthing Thrusters:	2x 2400 mm FP propellers in nozzles
Bow Thrusters	2x 735 kW, 1750 mm, FPP
Networks	690 V, 440 V and 230 V – 60 Hz
Main Generators Sets:	2x CAT 3512C, each 1352 ekW at 1800 rpm 2x CAT C32, each 994 ekW at 1800 rpm
Emerg./Harbour Gen. Set:	1x CAT C-09, 238 ekW at 1800 rpm

DECK EQUIPMENT:

Anchor Mooring Winch:	1x Electric-hydraulic, with 2 warping heads and rope storage drums
Capstans:	2x Electric-hydraulic, each 13 t pull
Deck Crane:	1x Knuckle boom 5 t at 15 m
Tugger Winch:	2x Electric-hydraulic, each 15 t pull (1st layer)

NAVIGATION & COMMUNICATION:

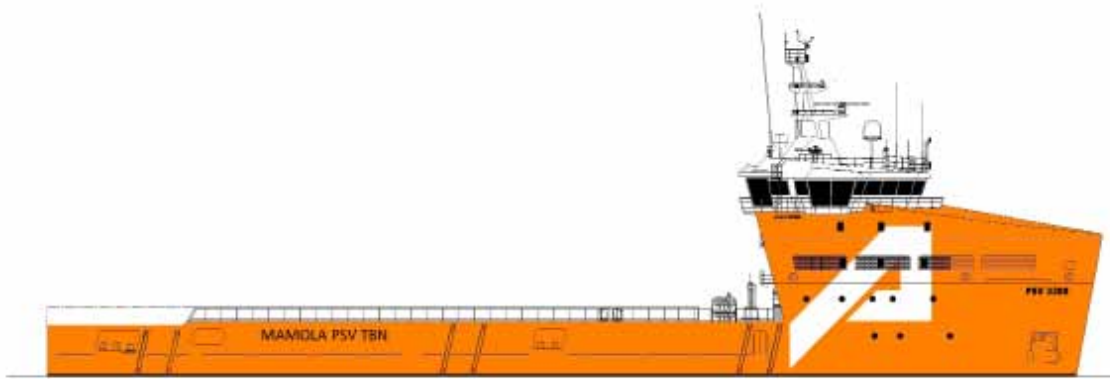
Nautical:	radar X-band, radar S-band, ECDIS
DP-System:	DP-2
GMDSS	Area A3

ACCOMODATION:

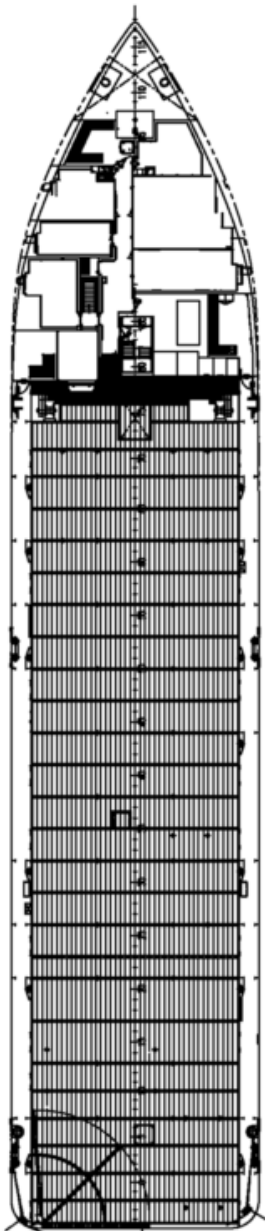
Crew:	16 persons
Passengers:	16 persons
MLC 2006 Compliant	

MISCELANEOUS:

Fast rescue craft
Oil recovery tanks
NAUT-OSV Nav1 notation
Incinerator
Rov support predisposition
Ballast water treatment system
Selective catalytic reduction system
Helicopter winch area
Spray booms
Boat landing (Optional)



Main Deck plan



Lower Deck plan

