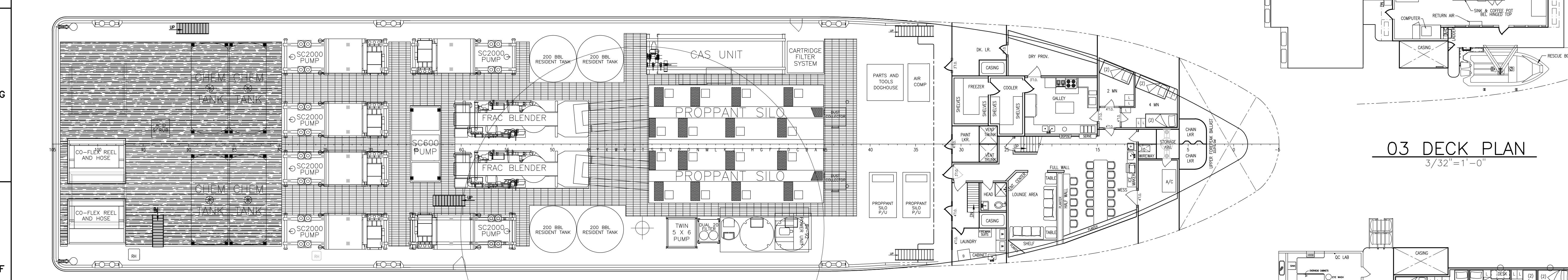
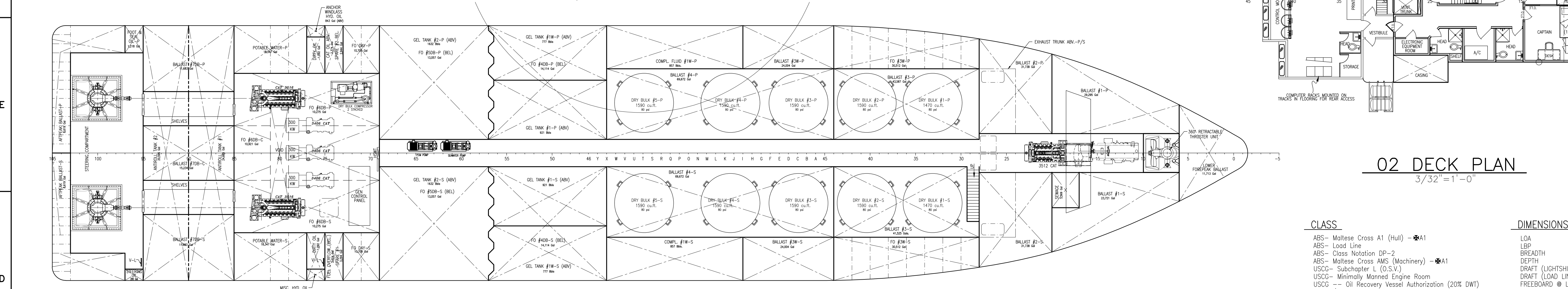


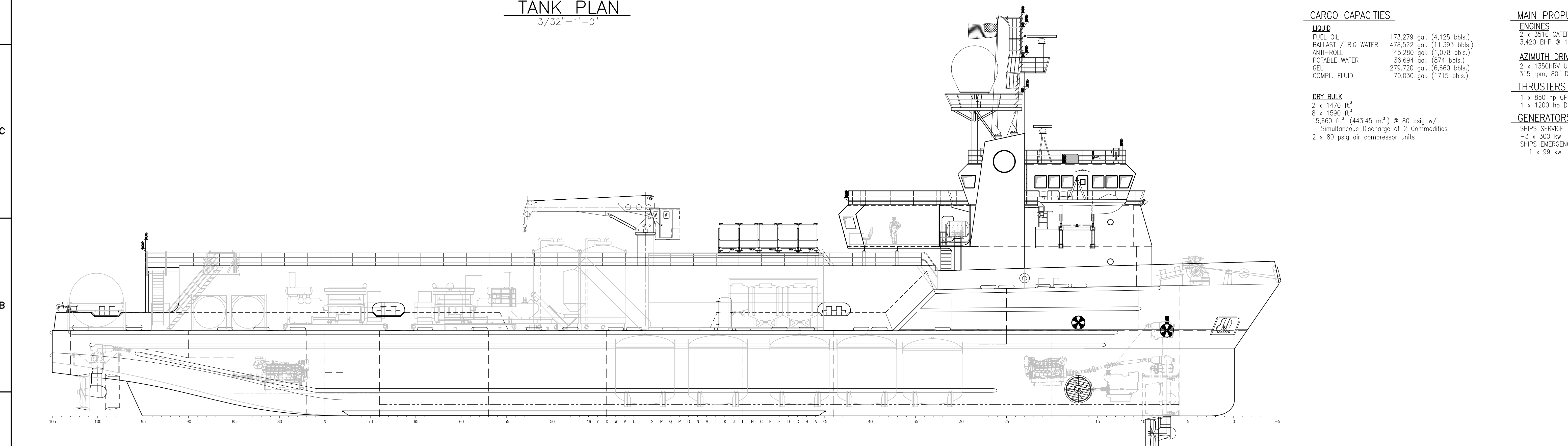
01 DECK PLAN  
3/32"=1'-0"



MAIN DECK PLAN  
3/32"=1'-0"

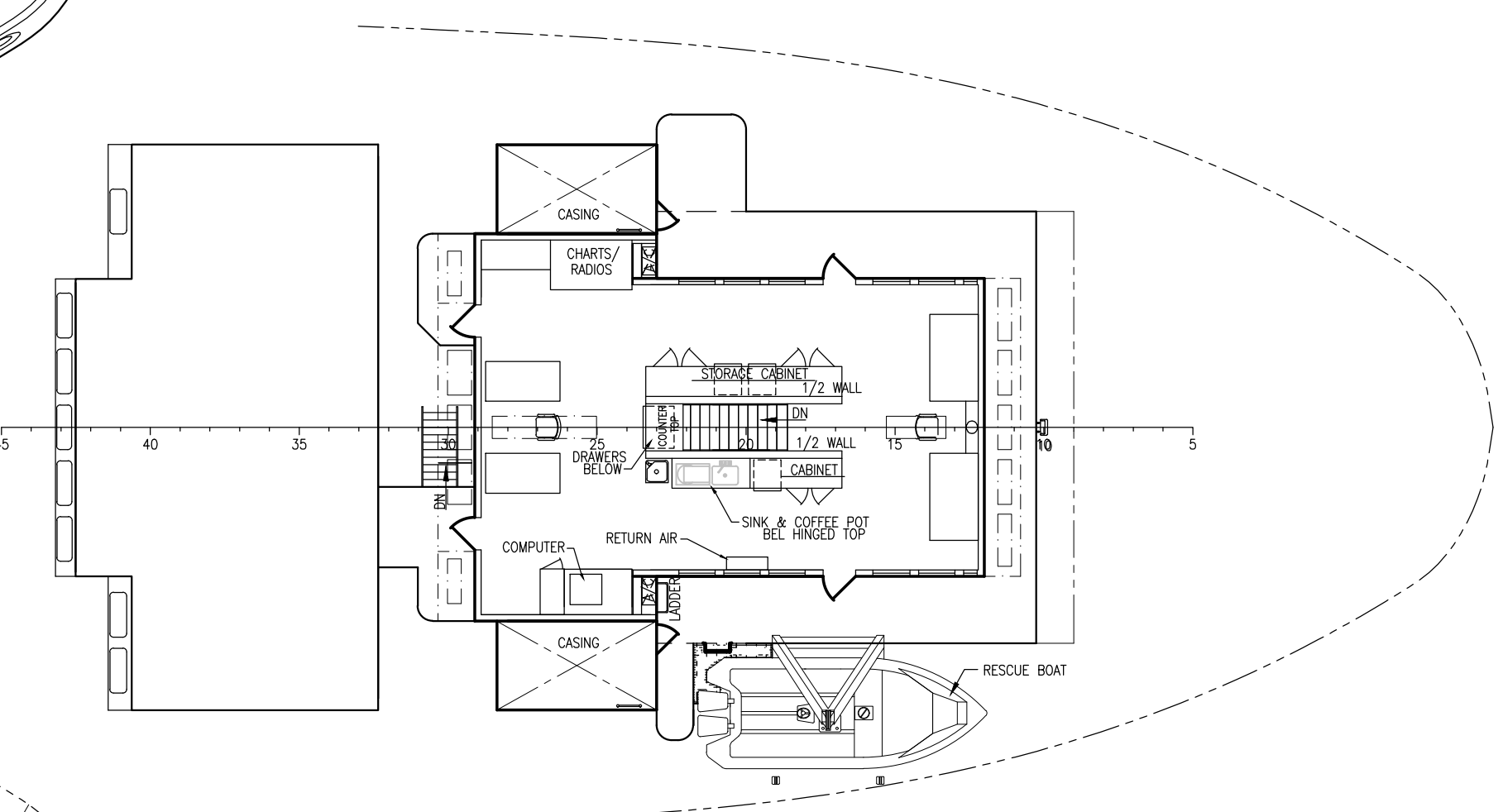


TANK PLAN  
3/32"=1'-0"

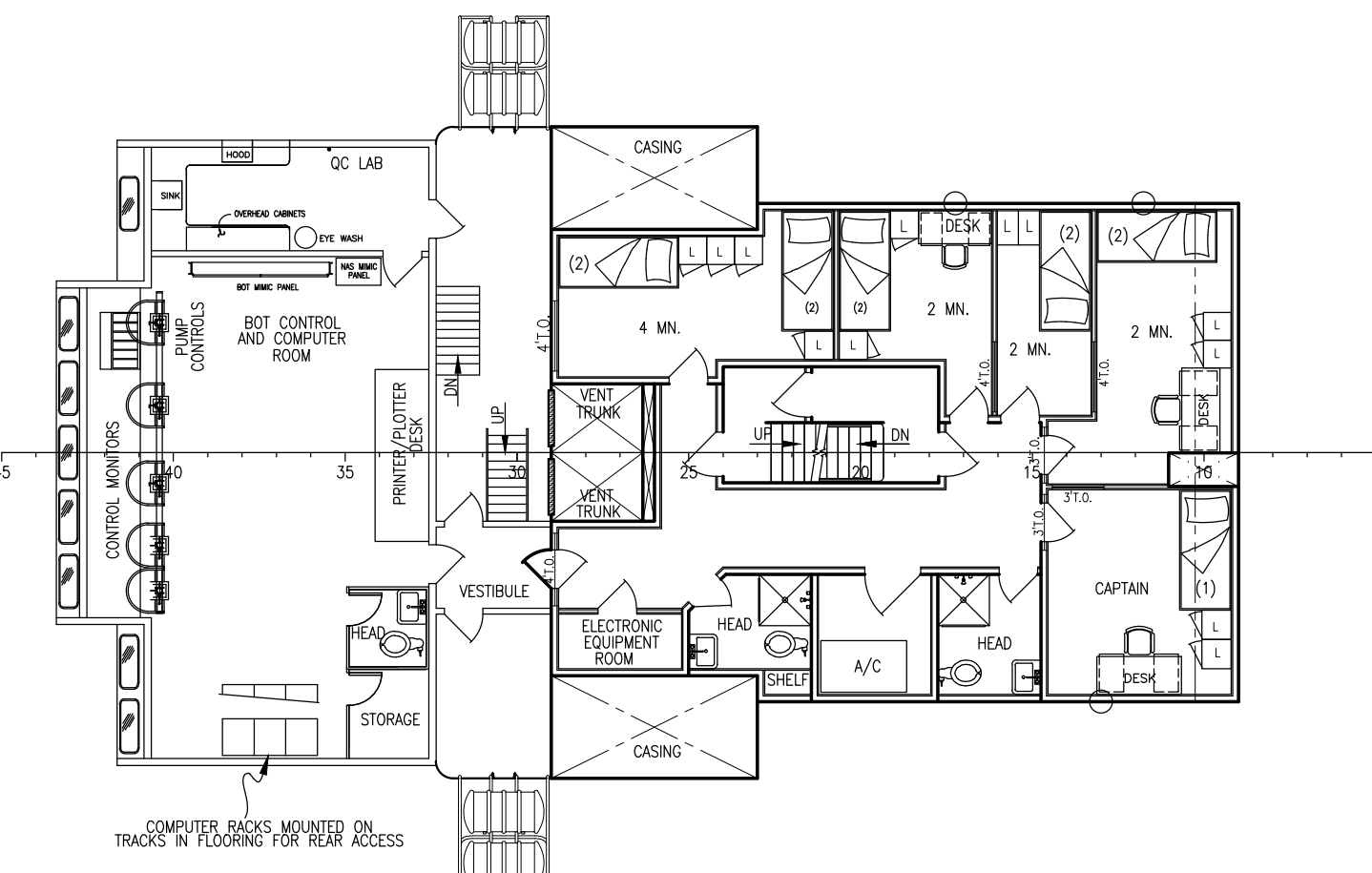


OUTBOARD PROFILE  
3/32"=1'-0"

ALTERATIONS						
NO	SHT-ZONE	DESCRIPTION	BY	DATE	APPD	DATE
1	THRU-OUT	ADDED CLIENT FURNISHED EQUIPMENT AND CLIENT RESPONSIBLE MODS. TO CONTRACT VESSEL.	GR	04/27/00	GROOK	04/27/00
2	THRU-OUT	REVISED AS PER NEW DECK LAYOUT FOR MAIN DECK & CONTROL ROOM FROM CLIENT.	BB	12/29/00		
3	THRU-OUT	UPDATED HULL PARTICULARS.	BB	01/11/01		
4	THRU-OUT	REVISED AS PER NEW DECK LAYOUT FOR MD & PROFILE FROM CLIENT DWG 01/11/01.	BB	04/26/01		
5	GENERAL	7' x 2' MAN ROOMS	BB	04/26/01		
		ADDED DEANMIGHT SCALE AND MODIFIED METRIC PARTICULARS.	HM	05/15/03		



03 DECK PLAN  
3/32"=1'-0"



02 DECK PLAN  
3/32"=1'-0"

LOADING SCALE			
DRAFT IN FEET	DISP. L.Tons (S.W.)	DEADWEIGHT, L.Tons (S.W.)	DRAFT IN FEET
16			16
15	4800	2500	15
14	4300	2000	14
13	3800	1500	13
12			12
11	3300	1000	11
10	2800	500	10
9			9
8	2300	0	8

- CLASS**  
ABS - Mollsea Cross A1 (Hull) - \*A1  
ABS - Load Line  
ABS - Class Notation DP-2  
ABS - Mollsea Cross AMS (Machinery) - \*A1  
USCC - Subchapter L (D.S.V.)  
USCC - Minimally Manned Engine Room  
USCC - Oil Recovery Vessel Authorization (20% DWT)  
SOLAS '97  
MARPOL '92
- CARGO CAPACITIES**  
LIQUID  
FUEL OIL 173,279 gal. (4,125 bbls.)  
BALLAST / RIG WATER 478,522 gal. (11,393 bbls.)  
ANTI-ROLL 45,260 gal. (1,076 bbls.)  
POTABLE WATER 36,694 gal. (874 bbls.)  
GEL 279,720 gal. (6,660 bbls.)  
COMPL. FLUID 70,030 gal. (1,715 bbls.)  
DRY BULK  
2 x 1470 ft<sup>3</sup>  
8 x 1580 ft<sup>3</sup>  
15,660 ft<sup>3</sup> (443.45 m<sup>3</sup>) @ 80 psig w/  
Simultaneous Discharge of 2 Commodities  
2 x 80 psig air compressor units
- DIMENSIONS**  
LOA 270'-0" (82.30m)  
LBP 260'-0" (76.25m)  
BREADTH 56'-0" (17.0m)  
DEPTH 18'-9" (5.70m)  
DRAFT (LIGHTSHIP) 7'-5" (2.21m)  
DRAFT (LOAD LINE) 15'-2" (4.63m)  
FREEBOARD @ L.S. DRAFT 11'-6" (3.51m)  
FREEBOARD @ L.L. DRAFT 5'-7" (1.69m)  
\* DEADWEIGHT TONS (LOAD LINE) 2778 L. TONS (APPROX)  
LIGHTSHIP DISPLACEMENT 1940 L. TONS (APPROX)
- MAIN PROPULSION ENGINES**  
2 x 3516 CATERPILLAR DIESELS  
3,420 BHP @ 1600 rpm
- SHIP MOTIONS**  
2 x PASSIVE TYPE ANTI-ROLL TANKS  
BILGE KEELS
- ACCOMMODATIONS**  
1 x 1 MAN ROOM  
7 x 2 MAN ROOMS  
4 x 4 MAN ROOMS  
31 TOTAL
- THRUSTERS**  
1 x 850 hp CP TUNNEL  
1 x 1200 hp DROP DOWN AZIMUTH
- GENERATORS**  
SHIPS SERVICE DIESEL GENERATORS  
- 3 x 300 kw  
SHIPS EMERGENCY DIESEL GENERATOR  
- 1 x 99 kw
- AZIMUTH DRIVES**  
2 x 1350HP ULSTEIN  
315 rpm, 80" Dia., 4 BLADE FPP
- LIFE SAVING**  
4 x 25 MAN INFLATABLE LIFE RAFTS  
1 x 5.8m Rescue Boat  
Other Gear as req'd. by USCG/SOLAS

SHEET INDEX		PLAN DISTRIBUTION	
Sht. No.	All. No.	Description	Alteration
			A1 A2 A3 A4 A5 A6
Date		10/12/01	
Owner		01/08/01	
Charterer		00/00/01	
ABS		1	
USCG		1	
Planning		1	
Production		2	
Form-line		2	
NG/RACK		1	
Revised		1	

**NORTH AMERICAN SHIPBUILDING**

REFERENCES	
No.	Dwg. No.

RESERVATIONS						
No.	Zone	Description	Revised By	Date	Prepared By	Date

LIMITED RIGHTS STATEMENT			
Customer	Vessel Description		
	WELL SIMULATION VESSEL		

GENERAL DESIGN PLANS			
Dwg No.	270 56 WSV	Dwg No.	D2
Dwg By	GR	Chk By	WGR
Date	04/26/00	Date	04/26/00
Sht No	1	of	1
Hull No	166	Scale	AS NOTED
		Job No	6010
		Alt	A6

TOLERANCES:  
(Unless otherwise noted)  
Linear - ±.005  
Circular - ±.010  
Holes - ±.010  
Chamfers - ±.010  
Angles - ±.5°  
Geometric symbols in accordance with ANSI Y14.5M

Weight 0.00 Lbms  
VCG ft  
LCG ft