

1999 / 83.5m (274') DP-2 WELL STIMULATION / OFFHORE SUPPLY VESSEL



REGISTRATION

Hull No.	TBD
Vessel Type	WSV - Well Stimulation Vessel
Vessel Class	OSV - Offshore Supply Vessel
Year Built	1999
Shipyard	North American Fabricators
FLAG	Vanuatu
IMO	TBD

DIMENSIONS

Dimensions	274' x 56' x 21' (83.5m x 17.07m x 6.4m)
Length Overall	274 ft.
Draft (Lightship)	7'-2" (1.98m)
Draft (Loadline)	16'-10" (5.49m)
Deadweight Tonnage	2928.7 LT (2975.7 MT)

CLASSIFICATION

ABS	(A1) Maltese Cross (Hull)
ABS	(ABS) Maltese Cross (Machinery)
ABS	(DPS-2) Maltese Cross Dynamic Positioning System Class 2
ABS	Loadline
SOLAS	Cargo Ship
MARPOL	Ship Other Than Oil Tanker Carrying Oil

CAPACITIES

Fuel Oil	189,266 Gallons (716.4 m3)
Ballast	396,973 Gallons (1502.7 m3)
Potable Water	24,032 Gallons (91 m3)
Brine	153,342 Gallons (3,651 bbls)
Dry Bulk	7,946.3 ft3 @ 85 psig (225 m3 @ 5.8 bar)
Liquid Mud	51,114 Gallons (1,217 bbls)
Special Products	(SAND) 4,217 ft3 (119.4 m3)
Acid	60,720 Gallons (229.8 m3)

Gel

12,600 Gallons (300 bbls)

SPECIAL FEATURES

Ship Motion	Two (2) x Passive Type Anti-Roll Tanks
Ship Motion	Bilge Keels
Positioning	DPS-2 Dynamic Positioning System
Deck Crane	One (1) x 5,000 lb @ 30' outreach Fixed Boom
Firefighting	One (1) 1250 GPM Fire Monitor

MACHINERY

Main Engines	Two (2) CAT 3516, 1,710 HP
Bow Thrusters	One (1) Schottel 820 kw 4-Blade CPP
Drop Down Thrusters	One (1) Ulstein 1,200 HP 4-Blades, FPP
Z-Drives	Two (2) Ulstein 1,600 HP Z-Drives
Speed	13.9 Knots @ (12'-0" Draft)
Emergency Generators	One (1) x 170 kw CAT-3306
Ship's Service Generators	Two (2) CAT 3412, 500kw

LIFE SAVING EQUIPMENT

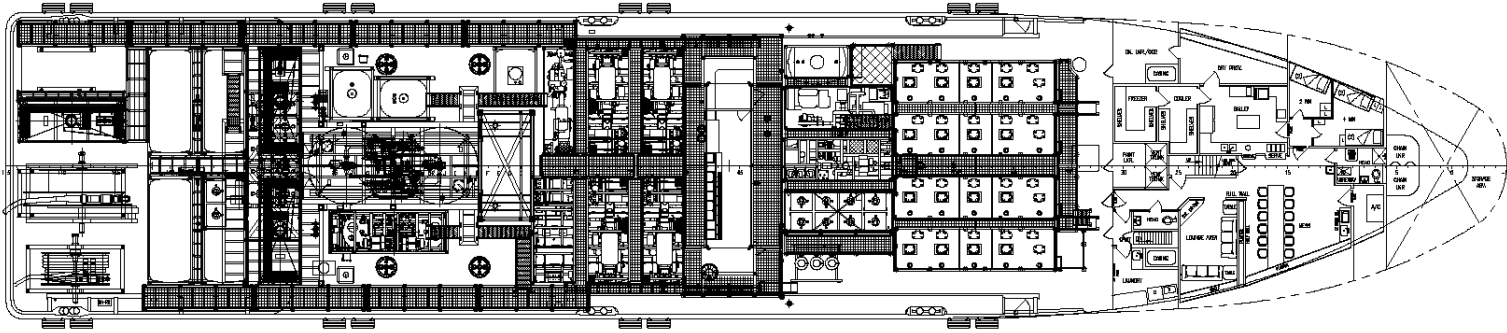
Life Rafts	Four (4) x 20 Man Inflatable Life Rafts
Life Boat	One (1) 5.8m, 6 Person Capacity
Other gear as required by authorities	

ACCOMMODATIONS

Accommodations	29 Bunks
----------------	----------

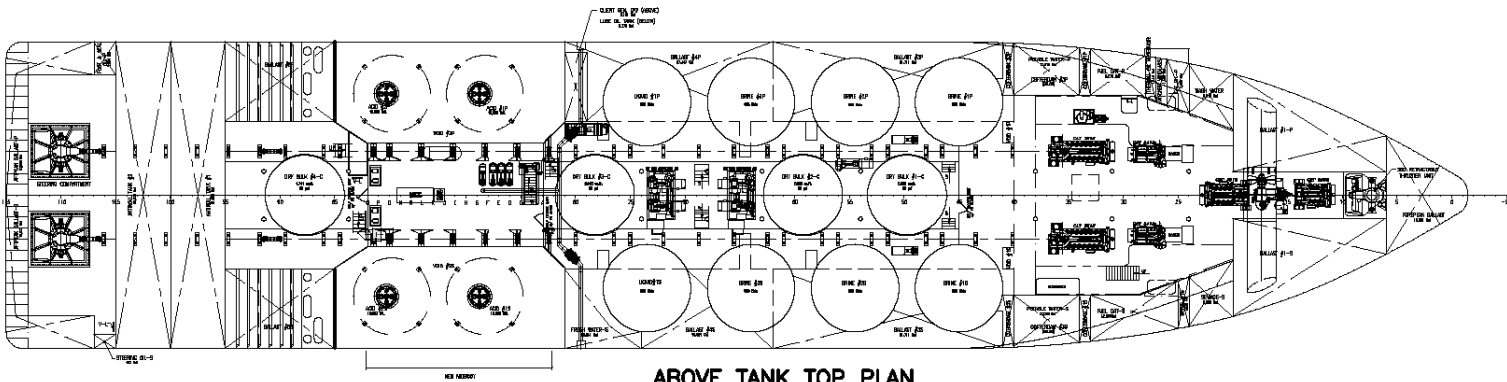


Schematics



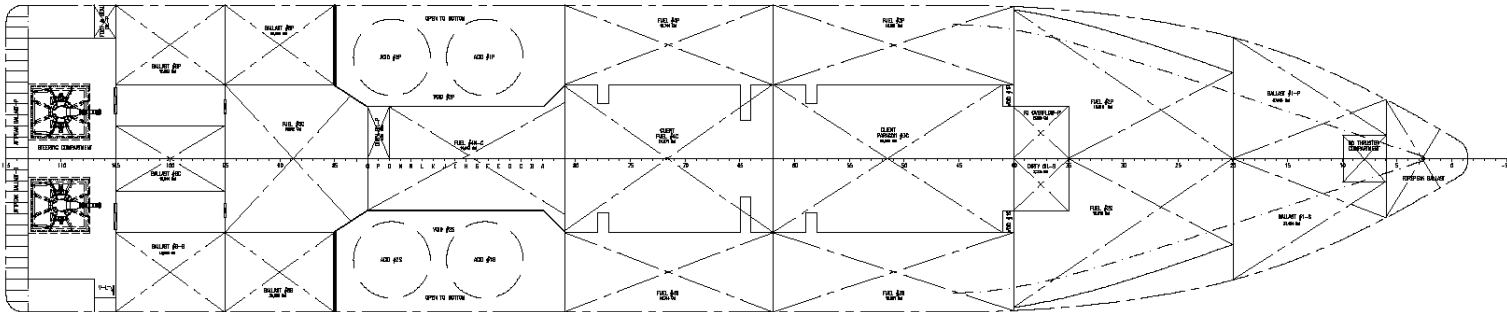
MAIN DECK PLAN

3/32" = 1'-0"



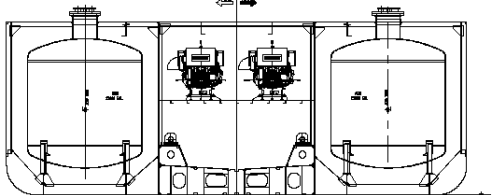
ABOVE TANK TOP PLAN

3/32" = 1'-0"



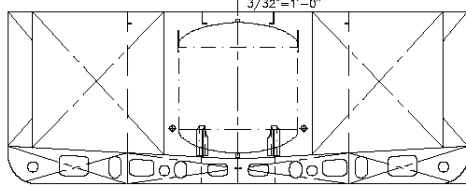
BELOW TANK TOP PLAN

3/32" = 1'-0"



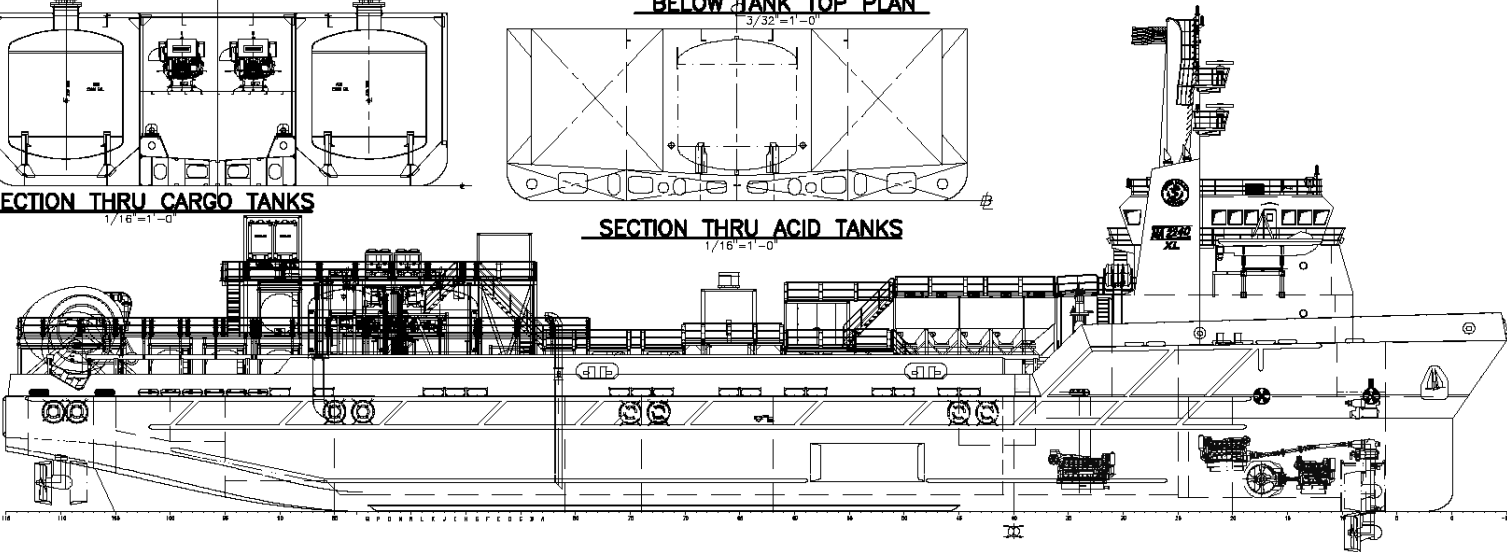
SECTION THRU CARGO TANKS

1/16" = 1'-0"



SECTION THRU ACID TANKS

1/16" = 1'-0"

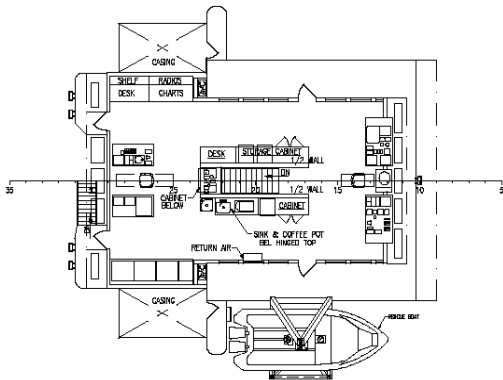


OUTBOARD PROFILE

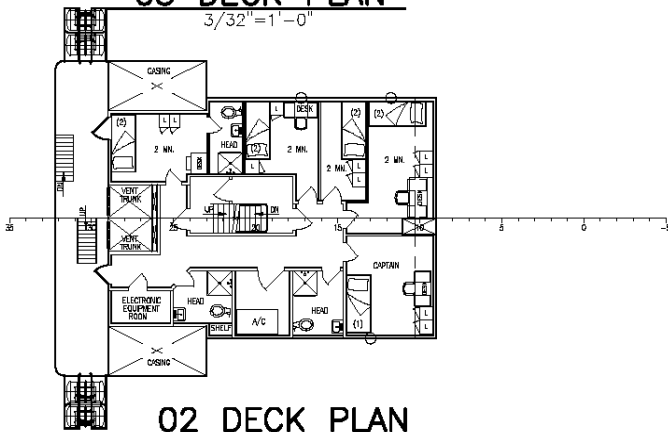
3/32" = 1'-0"



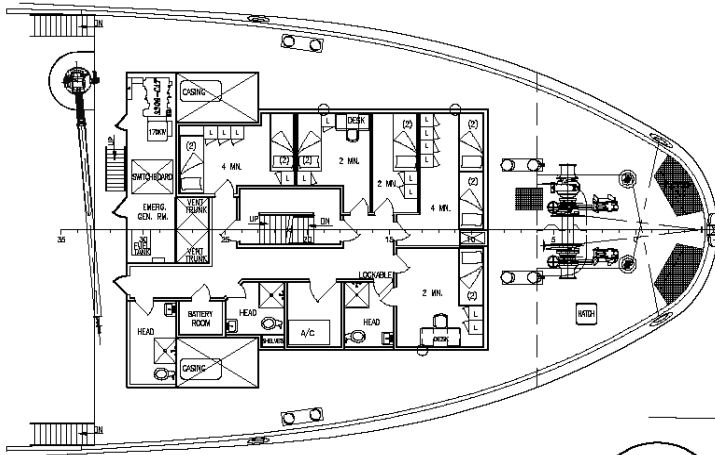
Schematics



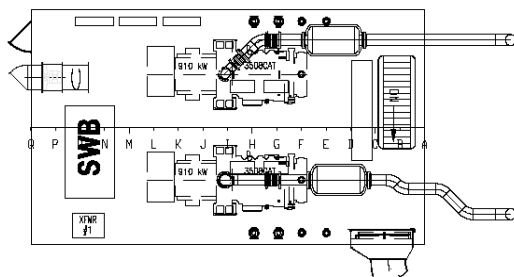
03 DECK PLAN
3/32"=1'-0"



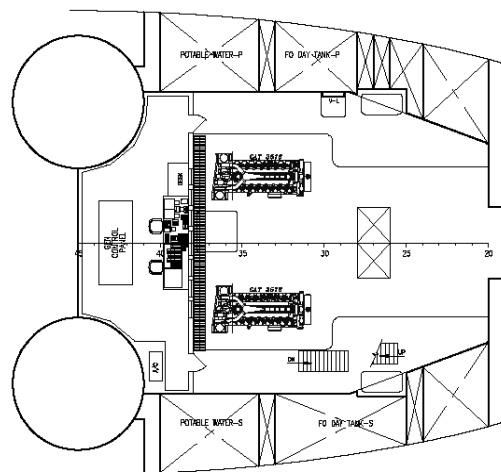
02 DECK PLAN
3/32"=1'-0"



01 DECK PLAN
3/32"=1'-0"



AFT DECK FLAT
1/16"=1'-0"



CONTROL ROOM PLAN
3/32"=1'-0"