

---

# 165' NON-DP FAST SUPPLY VESSEL



## REGISTRATION

Hull	39
Vessel Type	Fast Supply Vessel
Year Built	1999
Shipyard	Breaux Brothers Enterprises

## DIMENSIONS

Dimensions	165 ft. x 32 ft. x 13 ft. (50.29 m X 9.75 m X 3.96 m)
Draft (Maximum Operations)	9 ft. (2.74 m)
Freeboard (Maximum Draft)	6 ft. (1.83 m)
Clear Deck	98 ft. x 30 ft. (29.87 m x 9.14 m)
Cargo Deck Area	2,940 sq. ft. (273.01 m2)
Deck Cargo Capacity	300 LT (304.81 MT)
Gross Tonnage	98 (88.9 MT)
Net Tonnage	67 (60.78 MT)
Deadweight Tonnage	500 LT (508.02 MT)
ITC Gross Tons	378 (342.92 MT)

## CAPACITIES

Fuel Oil	20,263 gals. (76.70 m3)
Ballast	35,019 gals. (132.56 m3)
Potable Water	1,066 gals. (4.04 m3)

## PUMPS WITH DISCHARGE RATES

Fuel Oil	190 GPM @ 140 ft.
Water	190 GPM @ 140 ft.

## MACHINERY

Main Engines	Three (3) 3516B Twin Speed, 6,600 BHP
Bow Thrusters	One (1) 150 HP Retractable Azimuthing
Speed	22 knots
Propellers	Three (3) Fixed/Open
Generators	Two (2) CAT 3406; 75 kW each

## SPECIAL FEATURES

---

Ship Motion

Roll Stabilization Tanks

---

Walk-In Cooler

---

Walk-In Freezer

## ELECTRONICS

---

Electronics Package

Two (2) Radars, Two (2) VHF Radios, Sea SBB (Single Sideband Radio), Depth Sounder, GPS, Navtex Receiver, Necoder, Autopilot, 406 EPIRB, MT V-Sat

## CLASSIFICATION

---

ABS

High-Speed Regulations

---

ABS

Loadline

## ACCOMMODATIONS

---

Accommodations

7

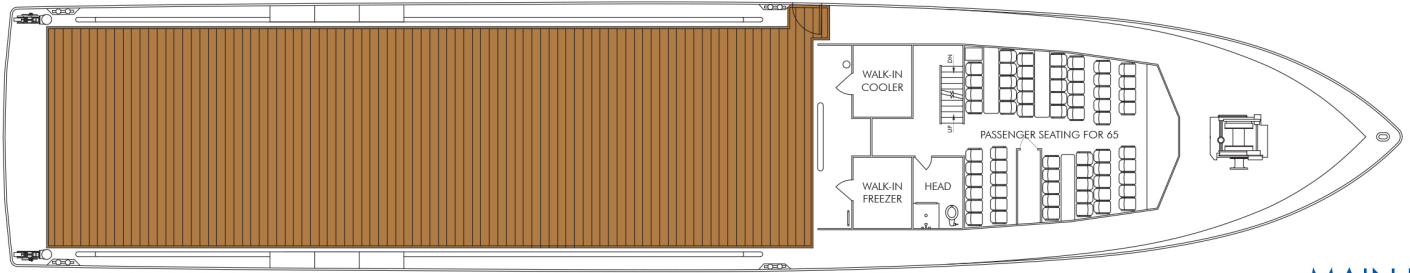
---

Passengers

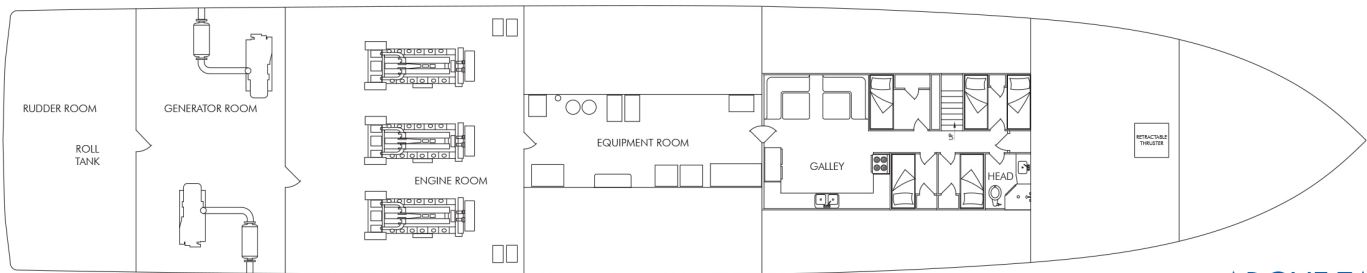
65



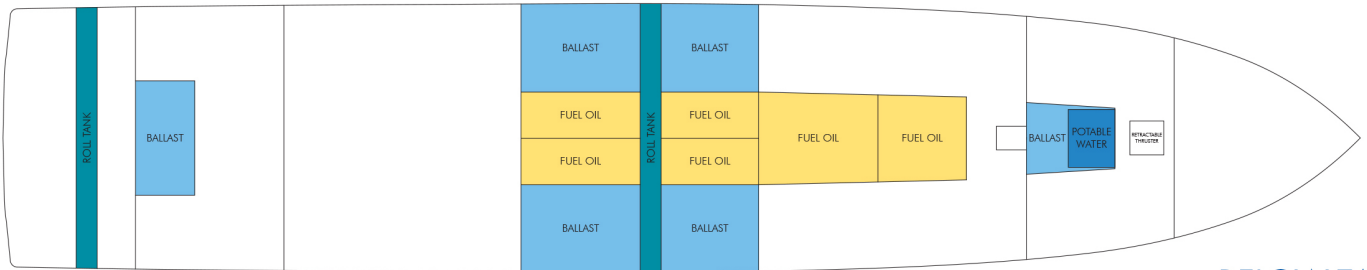
# Schematics



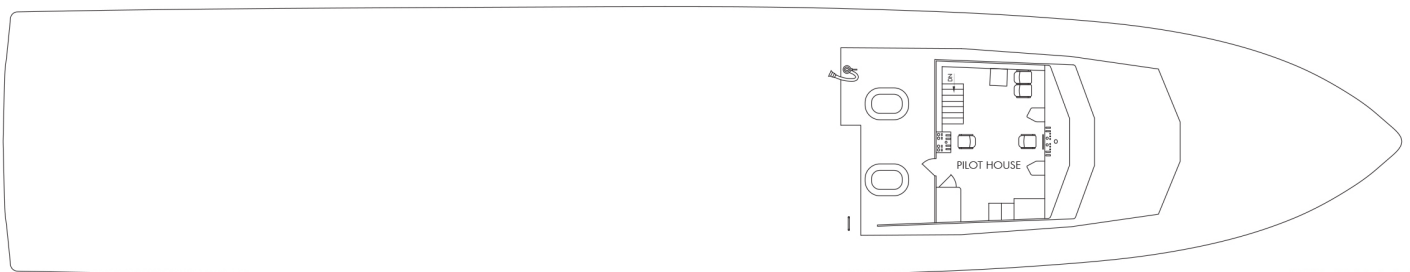
MAIN DECK



ABOVE TANK TOP



BELOW TANK TOP



PILOT HOUSE

- Brine/Drill Water
- Ballast/Fresh Water
- Fuel Oil
- Liquid Mud
- Dry Bulk
- Anti-Roll
- Auxiliary
- Dirty Oil
- Fuel Oil Overflow
- Potable Water
- Sewage
- Void/Cofferdam
- Wash Water
- Liquid Mud Cleaning
- Methanol

All specifications subject to change.

