

Brief Introduction

MMC887CD Platform Supply Vessel



PRINCIPAL PARTICULARS

Class
 ABS +A1 (E) Offshore Support Vessel,
 (SUPPLY-HNLS, FFV1, GP,UWILD,SPS,
 OSR-C1(TK. 3PS/SB),HDC(5[mt/m2] A-DECK),
 HLC(2.4,LM TANKS 1,2,3,4);(E),
 +AMS,+ACCU,+DPS-2, ENVIRO,RW
 Diesel Electric Propulsion

Propulsion TYPE

DIMENSIONS

Length Overall 87.25m
 Length BP 83.00m
 Beam Moulded 18.80m
 Depth to Main Deck 7.40m
 Design Draft 5.90m
 Max summer Draft 6.05m

MACHINERY

Main Diesel Generators 4 x 1700 Kw (total 6800Kw)
 Emergency Generator 1 x 350kW
 Shore Power 1 x 400A Shore Supply Receptacle
 Thrusters 2 x 2000kW 360 deg Azimuths
 Bow Thrusters 1 x 910 Kw tunnel Thruster
 Retractable Bow 1 x 800KW Azimuth

SPEED

Trial Speed at 5.0m 14.30 Knots. 100% MCR
 Type of Fuel Marine Diesel Oil

CAPACITIES

Fuel Oil 951 Cu.m
 Fresh Water 883 Cu.m
 Potable Water 70 Cu.m
 Water Ballast/Drill Water 1767 Cu.m
 Dry Bulk 424 Cu.m
 Base Oil 220 Cu.m
 Mud / Brine 2037 Cu.m
 Metanol / Mud 335 Cu.m
 Mud / R.O 1563 Cu.m
 Lub Oil 27 Cu.m
 Deadweight 4936t at Scantling draft
 Deck Cargo Capacity 2400 tonnes
 Cargo Deck Free Area 1000 m²
 Deck Strength 5.0t/ m²

PUMPS

Fuel 1x150[m3/h]9bar
 Fresh Water 1x150[m3/h]9bar
 Dry Bulk 2 x 1200Cu.MHr, Simultaneous discharge
 Mud / ORO 4x75[m3/h]18bar/9 bar
 Methanol / ORO 2x75[m3/h]7.2bar/60[m3/h]9bar

ACCOMMODATION

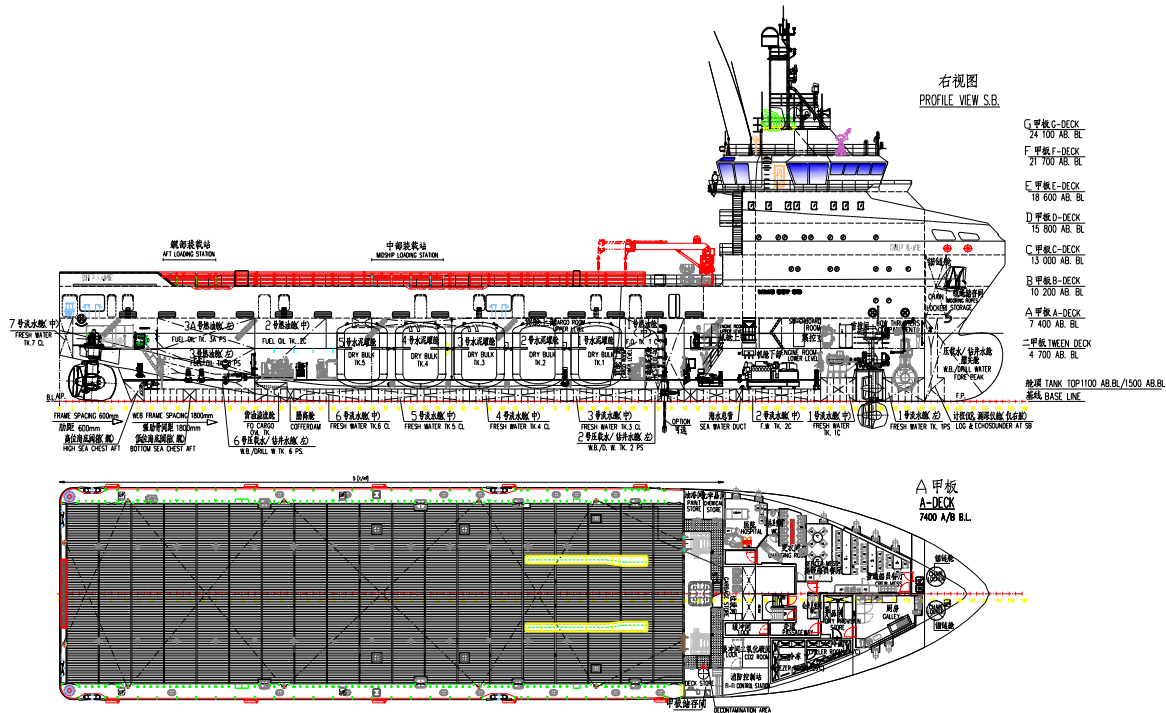
One Man Cabins 10x1 man=10 men
 Two Men Cabins 15x2 men=30 men
 Total Beds 40 Total
 1 x Hospital 1 bed
 Offices 1
 Gym 1
 Sewage system 43 POB

CARGO CRANE

3t @ 10m

Brief Introduction

MMC887CD Platform Supply Vessel



RADIO & NAVIGATION EQUIPMENT

- GMDSS: Area 3
 - 1 x Inmarsat C with SSAS
 - 1 x Inmarsat C with LRIT
 - 1 x MF/HF-DSC Radio Telephone
 - 2 x VHF-DSC Duplex Radio Telephone
 - 1 x VHF simplex Radio Telephone
 - 1 x VSAT
 - 1 x SSB Transceiver 6 Channel DSC
 - 1 x 96nm X-band Radar 23.1" display
 - 1 x 96nm S band Radar 23.1" display
 - 2 x ECDIS 24" display
 - 3 x VHF Portable radios
 - 1 x Magnetic Compass
 - 1 x Gyrocompass
 - 1 x DGPS
 - 1 x Autopilot
 - 1 x MOB
 - 1 x Echo Sounder ,Speed log
 - 1X VDR
 - 1 x Anemometer
 - 1XBNWAS
 - 1 x Weather Fax Receiver
 - 1 x Auto Telephone system
 - 1 x Sound Powered Telephone system
 - 1 x PA/Talkback System
 - Local Area Network (LAN) connected
 - 1 x TV and Radio system
 - 1XAIS
- DP KONGSBERG C Pos DPS-2, with following reference systems
- 3 x Gyro Compass (One supplied by radio vendor,the other two supplied vendor)-3 x Wind sensors - 3 x MRUs - 2 x DGPS - 1 x CyScan
 - Seachest provided for HIPAP (Optional)

DECK & AUX. EQUIPMENT

- Anchors Anchors 2 x 2475 kg PAC-14
- Chain Chain 50mm U2 grade Tot 495 M
- Anchor/ Mooring 2 x 10t @10m /min C/W warping heads
- Tugger Winches 2 x 10t @ 15m/ min
- Capstans 2 x 8t @ 20m/ min

FIRE EXTINGUISHING SYSTEM

- Fi Fi Class 1 2 x 1600 Cu.m @ 130m Hd
- Monitors Remote control 2 x 1200 Cu.M
- Emergency Fire Pump 65 Cu.M @ 60m Hd
- Fixed Co2 System Engine Room
- Fixed Water Mist Engine Room
- 6 x fireman outfits
- 1 x fire blankets for galley

LSA EQUIPMENT

- 1xSOLAS type MOB for 15 persons
- Launch and Recovery Davit
- 3x 20 man life rafts SOLAS approved each side
- 10 x Lifebuoys SOLAS approved
- 47 Lifejackets as per SOLAS requirement
- 1 x EPIRB SOLAS approved
- 1 x Line Throwing Apparatus
- 2 x Orange Smoke Signals
- 4 x First Aid Kit
- 1 x daylight signaling light
- 1 x air horn
- 1 x 10 t/d Fresh Water Maker
- 1 x Ships Air Breathing Compressor
- Oily Bilge Water Separator