

JACK-UP

Available for Sale



Marathon LeTourneau Class 84 Jack-Up



TECHNICAL INFORMATION



General Information



Technical Specifications



Drilling Equipment



Vessel



Photographic Record



GENERAL INFORMATION

 **Flag:** Liberian

Rig Name: TBD Upon Completion of NCNDA

Design: Marathon LeTourneau Class 84 Jack up

Builder: Marathon LeTourneau, Shipyard Vicksburg,
Mississippi, USA

Upgraded: 2018 (Overhaul)



Status: Active, ABS Class Certification

Class Number: TBD

IMO Number: TBD

ABS Class Notations: A1, Mobile Offshore Drilling
Unit (MODU)

Last Inspection (ABS): January 2019



CONTACT INFORMATION

- **Horizon Offshore Services VA Group**
Tel: 1-713-501-2952
Email: management@horizonoffshoreservices.com





TECHNICAL SPECIFICATIONS

MAIN DIMENSIONS

- **Length:** 247 ft -7 in; **Breadth:** 227 ft -5 in; **Depth:** 26 ft
- **Legs:** 3 x 410 ft Square Truss
- **Leg Spacing:** Longitudinal leg centers 129 ft; transverse leg centers 142 ft
- **Spud cans:** 46 ft diameter x 24 ft high
- **Cantilever:** Slot dimensions 41 ft x 50 ft
- **Helideck:** S-61; diameter 70 ft

OPERATIONAL PARAMETERS

- **Water Depth:** 300 ft (17 ft - 300 ft)
- **Maximum Drilling Depth:** 20,000 ft with 5 in DP
- **Available length below hull including 5 ft margin Air Gap:** 80 ft
- **Transit Speed:** 5 knots
- **Survival Conditions – Criteria Design;** wind: 100 Knots; waves period: 13 sec; wave height: 44 ft
- **Jacking and skidding system:** Marathon LeTourneau AC electric rack and pinion, 90 ft/HR





DRILLING EQUIPMENT

Derrick: Dreco 170 ft x 30 ft x 30 ft x 1.500.000 lbs.

Cantilever Load: 1.310.000 lbs.

Drawworks: 1320 x UE 2000HP National Oilwell; wire 1 ½". Electric brake: model 7838 Baylor

Rotary Table: model C-375 National Oilwell 37 ½", driven by 1 D79 EMD motor

Top Drive: model TDS-4H Varco BJ 650 TON, with Pipe Handler model PH-85

Travelling: Continental Emsco 760H 650 TON

Crown Block: National OilWell 760FA

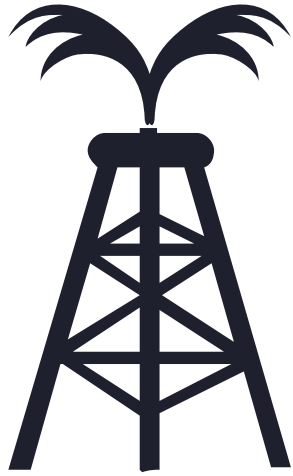
Mud Pumps: 2 National Oilwell modelo 12-P-160 Triplex - 5000 psi. Stand pipe 5 in x 5000 psi

Main Power: 3 EMD 16-645-E8 Engines 6600 HP, generators AB20-N6 x 1,575 kW 600 V

Emergency Power: 1 Cat 3412-TA 719 HP Diesel engine

Cementing Unit: 2 electric triplex pumps. 15000 psi, 14 BPM





DRILLING EQUIPMENT

Control System: air/electric powered

Choke and Kill Manifold: 3-1/16" x 10000 psi x 2 HCR & 2 manual

CAPACITIES:

- **Liquid Mud:** 1605 bbls
- **Bulk Mud / Cement:** 6240 cu.ft
- **Sacks:** 2500 sacks
- **Drill Water:** 10540 bbls
- **Potable Water:** 1294 bbls
- **Fuel Oil:** 4727 bbls
- **Base Oil:** 563 bbls
- **Preload Tanks (include combination tanks):** 15542 kips

Mud Equipment: Mud cleaner (4) MI Swaco; Desilter (1) Mi Swaco; Degaser, Rig Vaccum MI Swaco.





VESSEL

ACCOMMODATIONS

- 88 berths; main offices, auxiliary offices; mess and galley, meeting room; recreation room and gym, medical office with observation room and bedroom with eight beds for quarantine cases
- **Watermaker:** model NH75463+APC, FCI
- **Sewage Treatment:** model RF 4000-M; Red Fox

SECURITY SYSTEMS

- Communication and Navigation System GMDSS
- Smoke and Heat detection System
- CO₂ Extinguishing System; Water Extinguishing System with Raw Water System.; Portable extinguishing equipment
- Toxic Gas (H₂S) and Combustible Gas (CH₄) Detection System
- General Alarm System
- Emergency Shutdown System
- CCTV System
- One Lifeboat (63 Man Cap.), two survival capsules (28 Man Cap. each), four Liferafts (25 Man Cap. each)

CRANES

- Model PC-120AS Marathon Letorneau; Boom: 2 @ 120' Max. load 90000 lbs
- Model PC-120AS Marathon Letorneau; Boom: 1 @ 100' Max. load 90000 lbs





PHOTOGRAPHIC RECORD

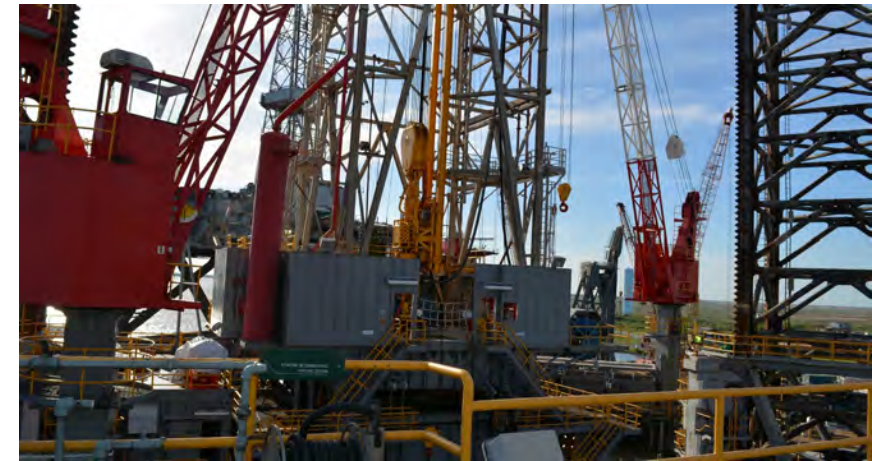


PORT, STB SIDE





DERRICK, DRILLING FLOOR TOP DRIVE TDS-4HS



DRAW-WORKS 1320-UE, DRILLING CONTROL PANEL
CHOKES MANIFOLD, REMOTE CONTROL PANEL



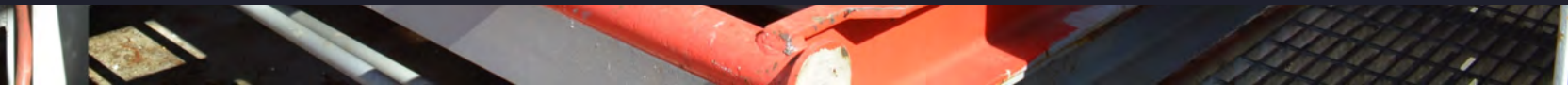


MUD PUMPS TRIPLEX 12-P-160 MIX CENTRIFUGAL PUMPS PRELOAD CENTRIFUGAL PUMPS





KOOMHEY UNIT, SHALE SHAKERS

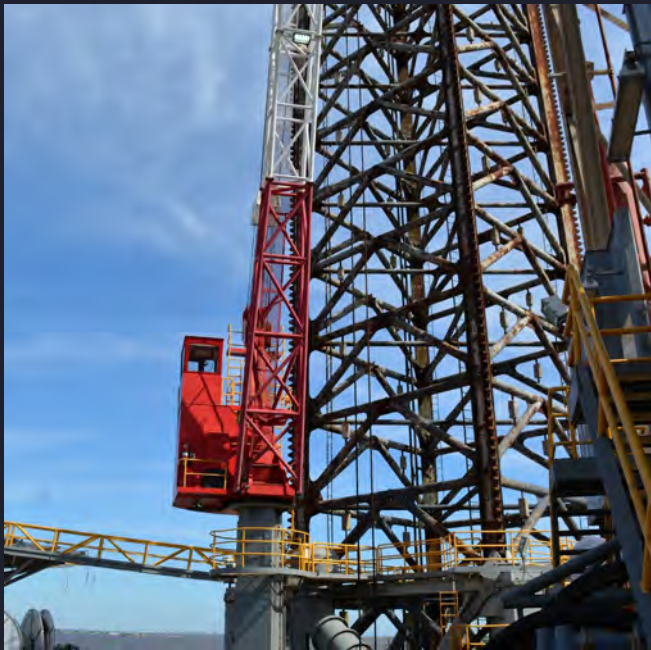
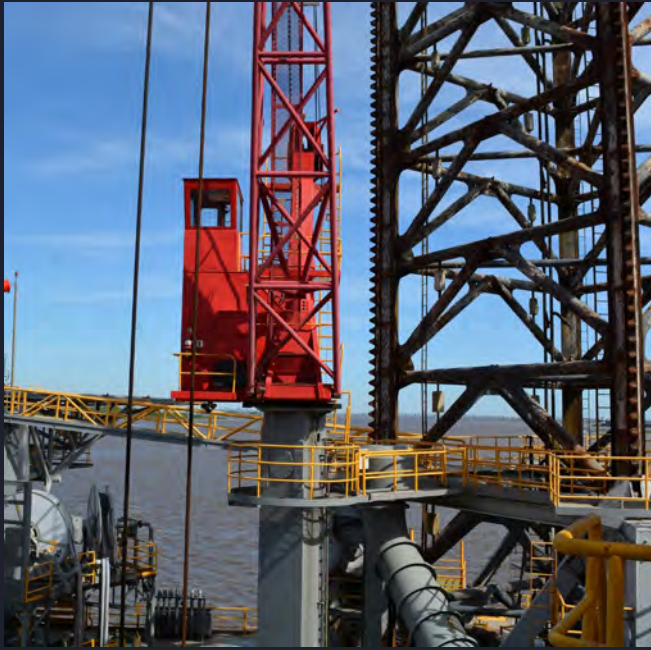




LSA



LSA



CRANES



NAVIGATION SYSTEM MAIN DECK CONTROL PANEL



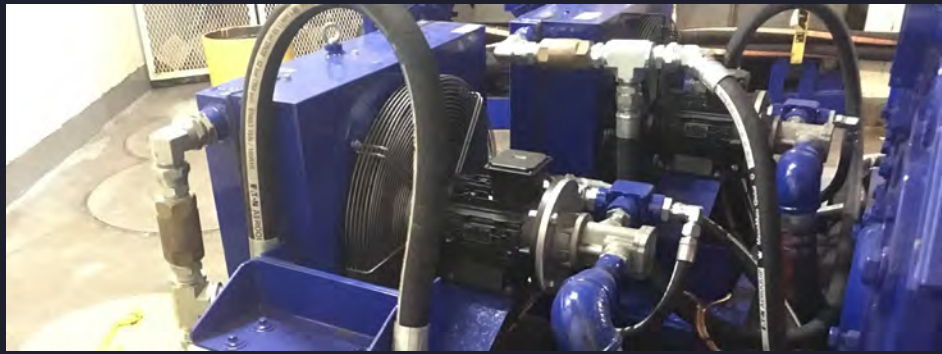
MAIN DIESEL MOTORS, BACKUP GENERATOR WATER TREATMENT PLANT





SCR, MCC





CEMENTING UNIT



ACCOMMODATION



ACCOMMODATION



ACCOMMODATION

