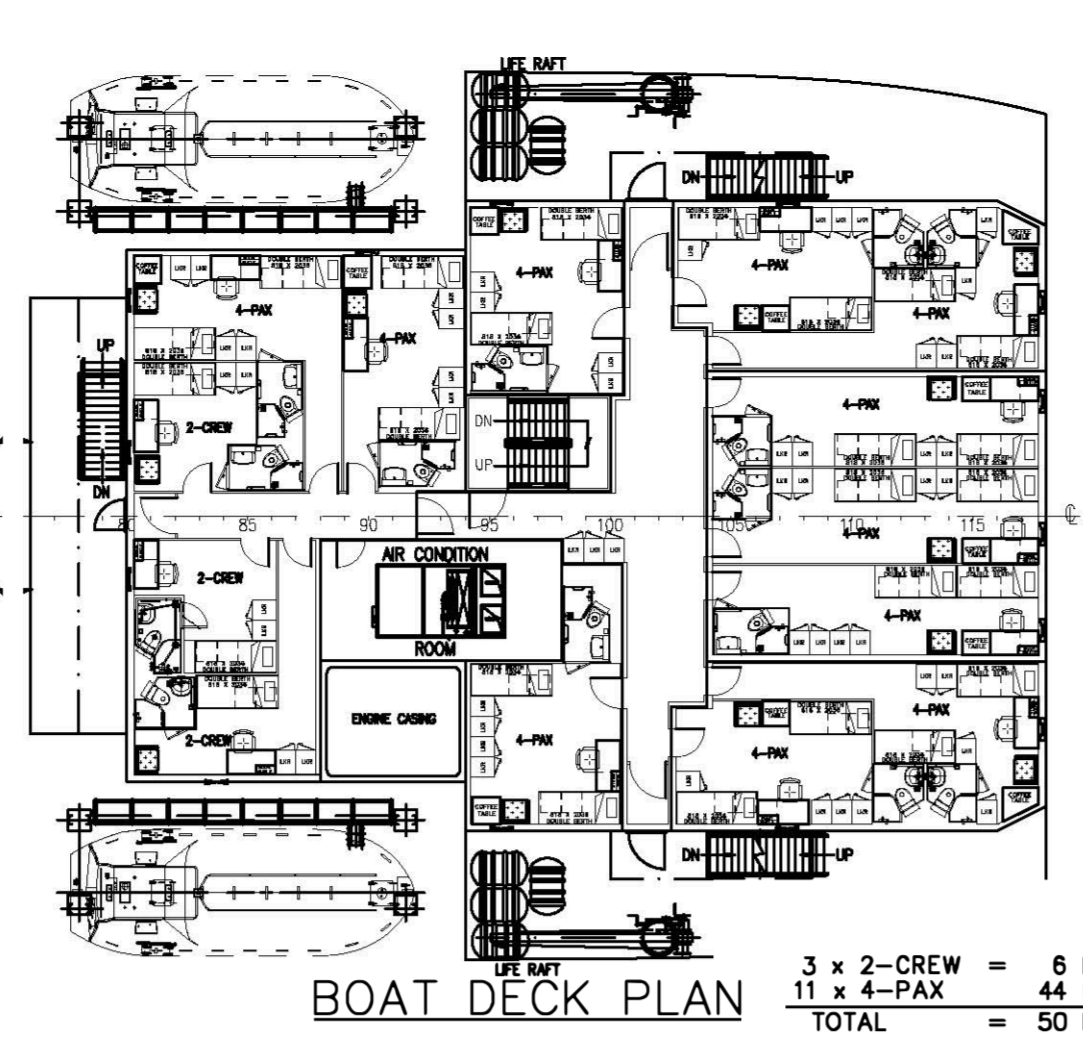
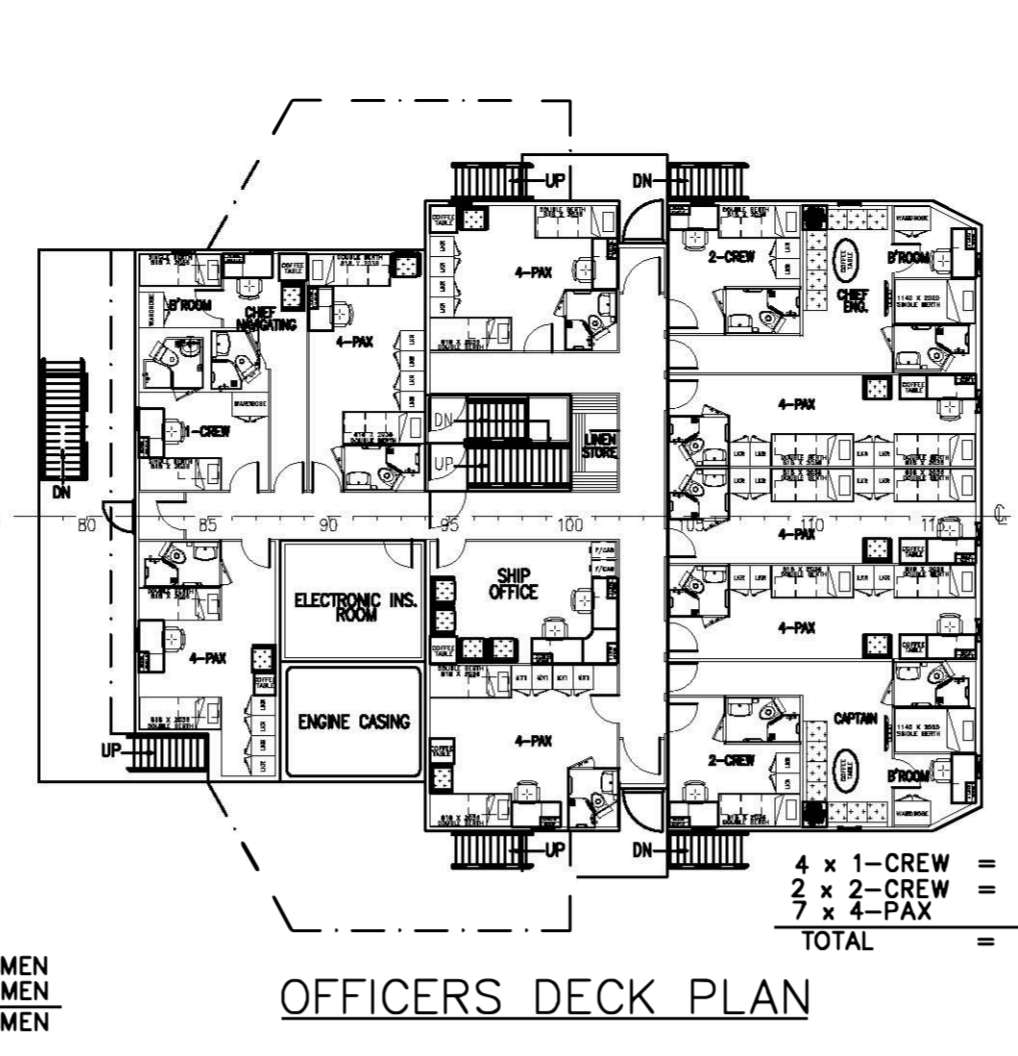


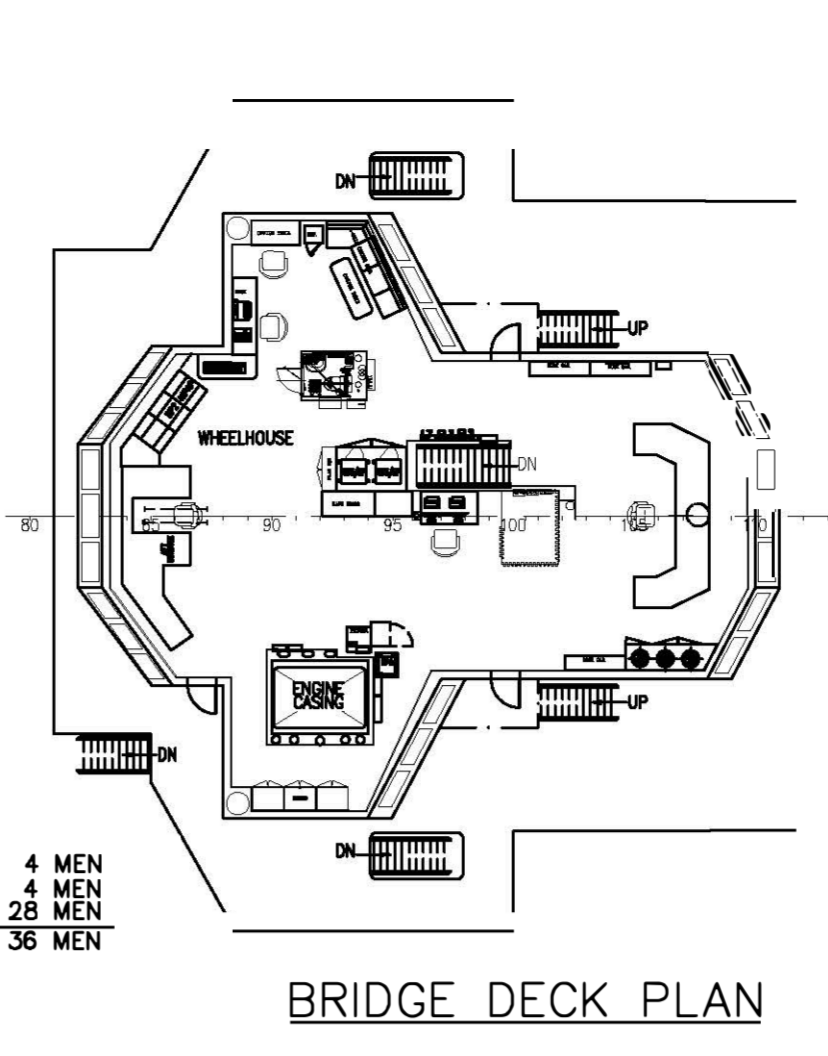
FORECASTLE DECK PLAN



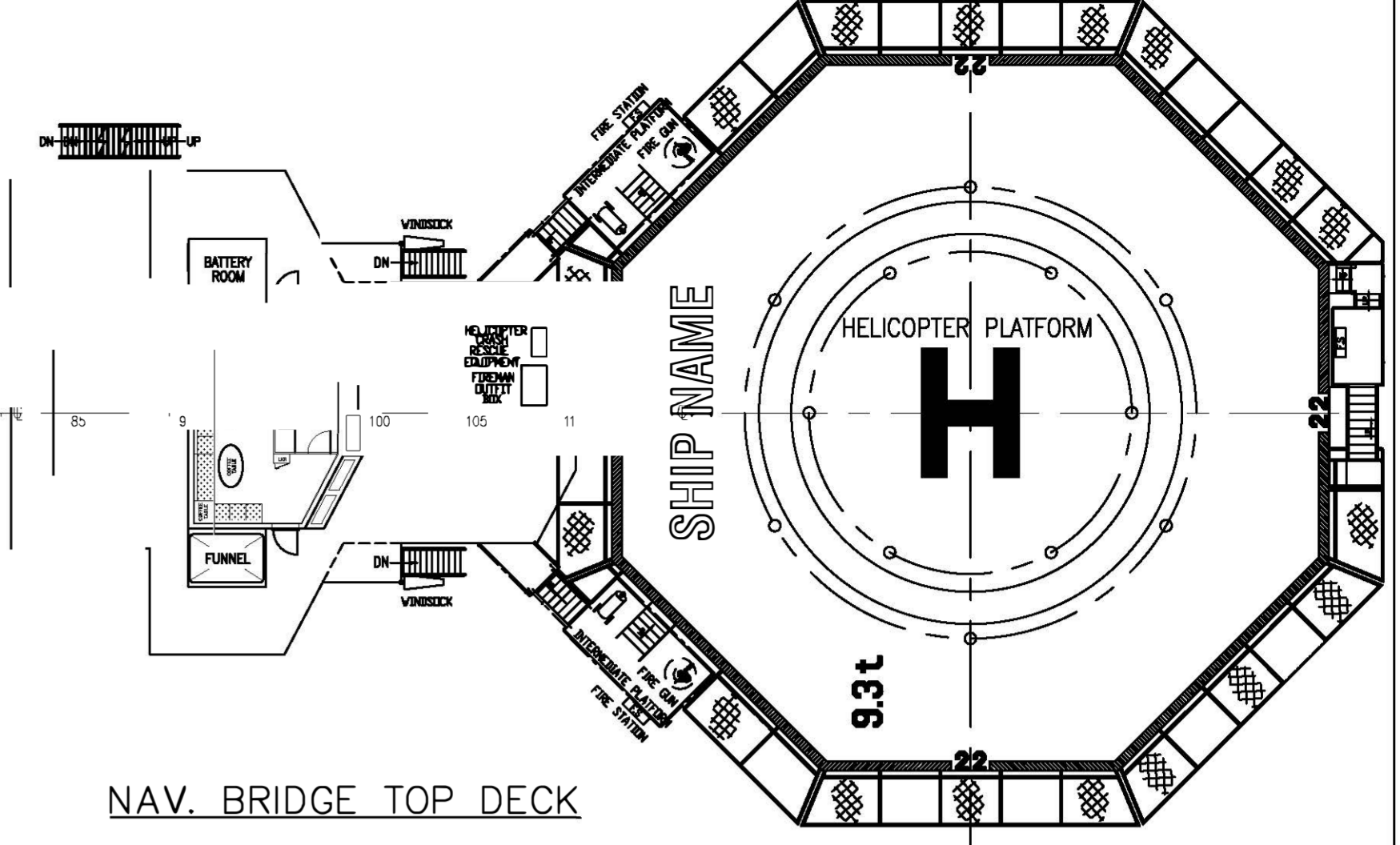
BOAT DECK PLAN



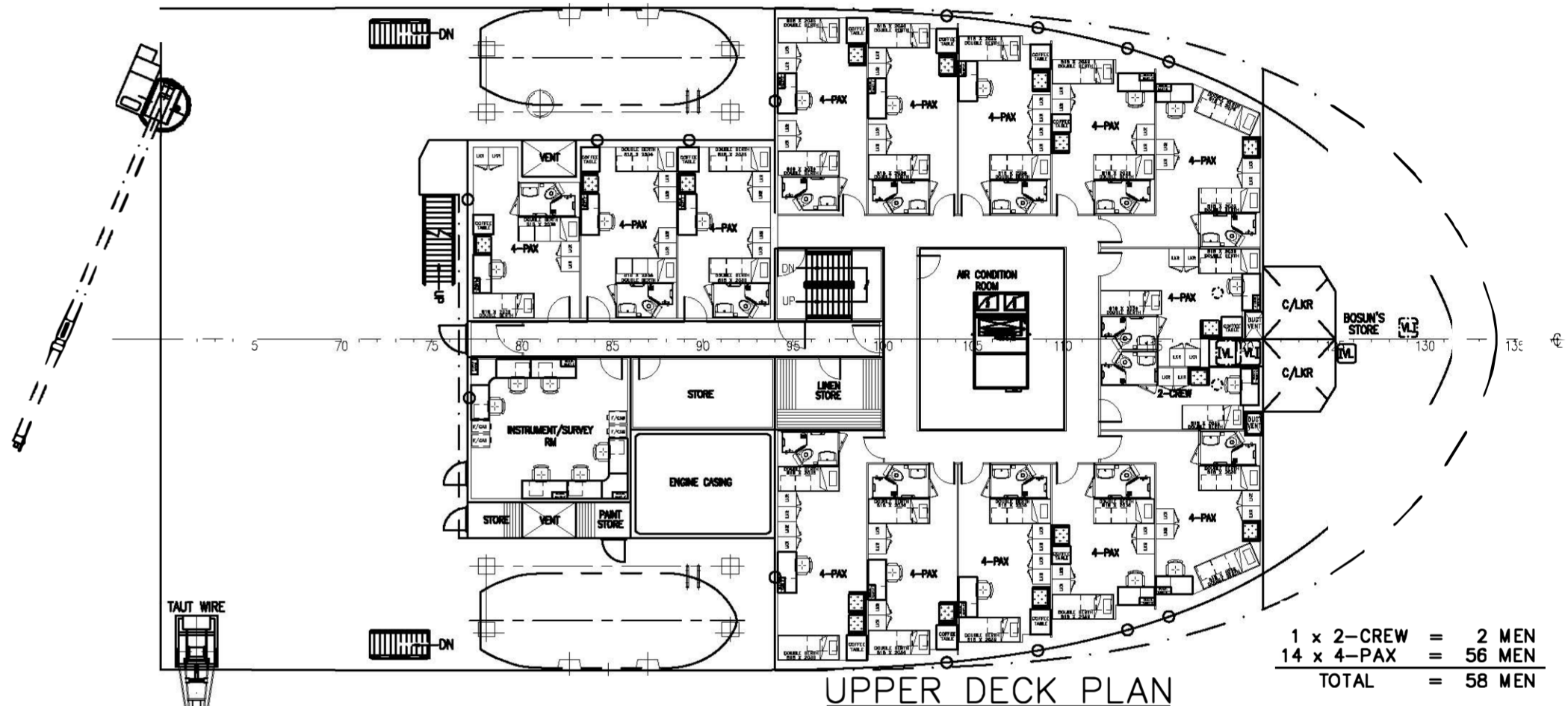
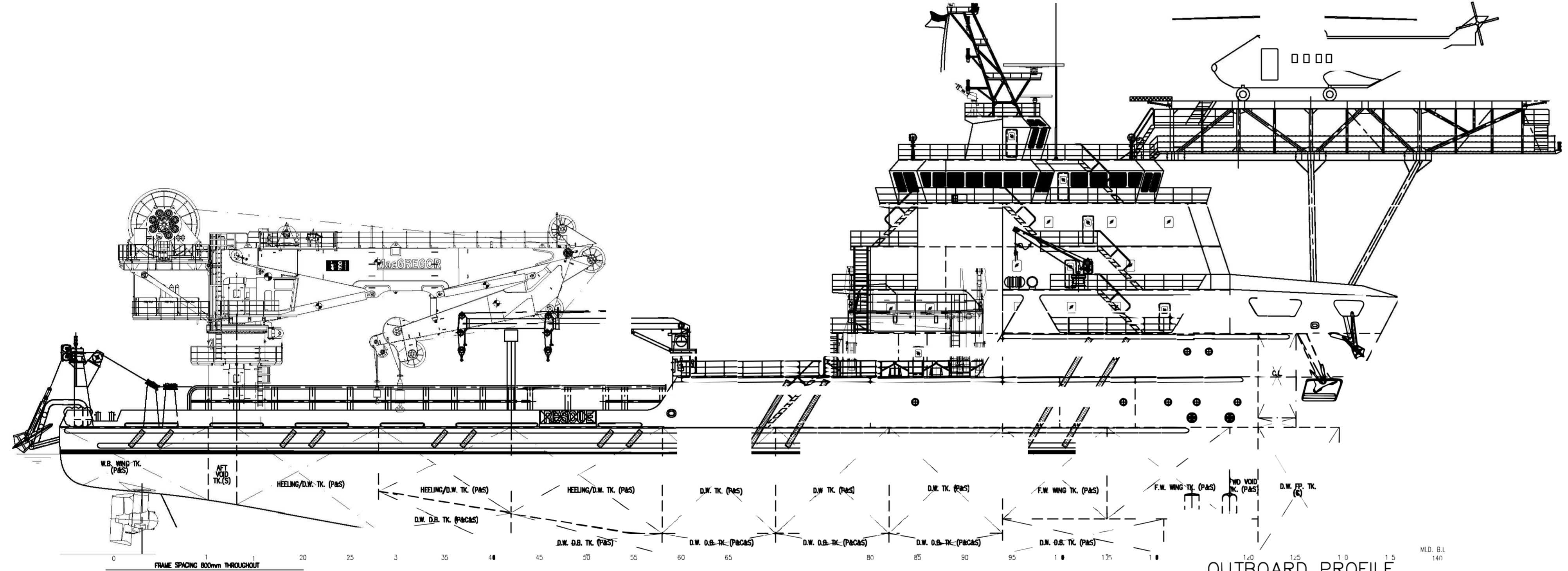
OFFICERS DECK PLAN



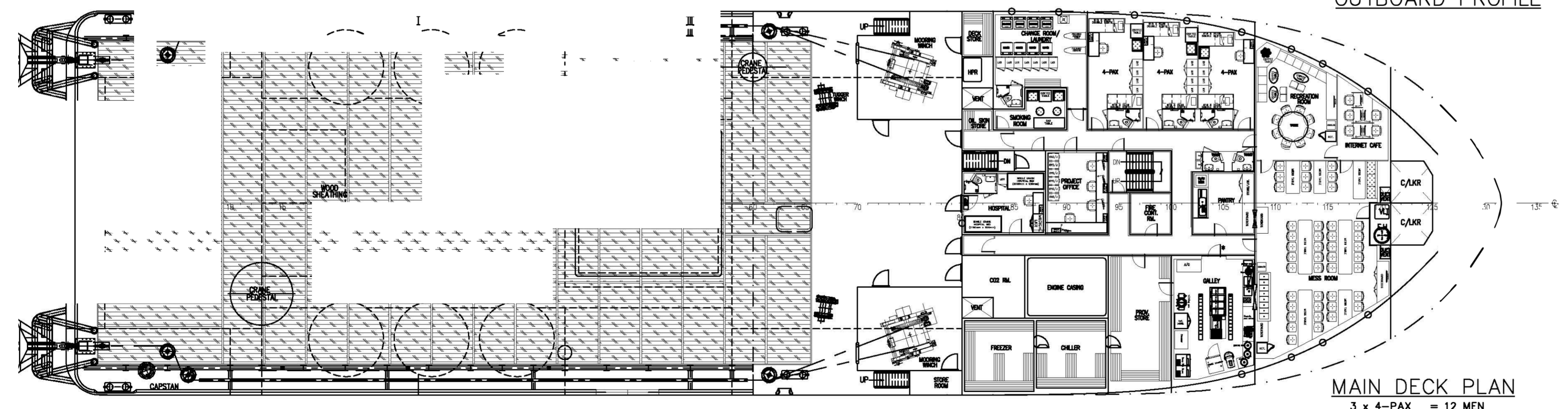
BRIDGE DECK PLAN



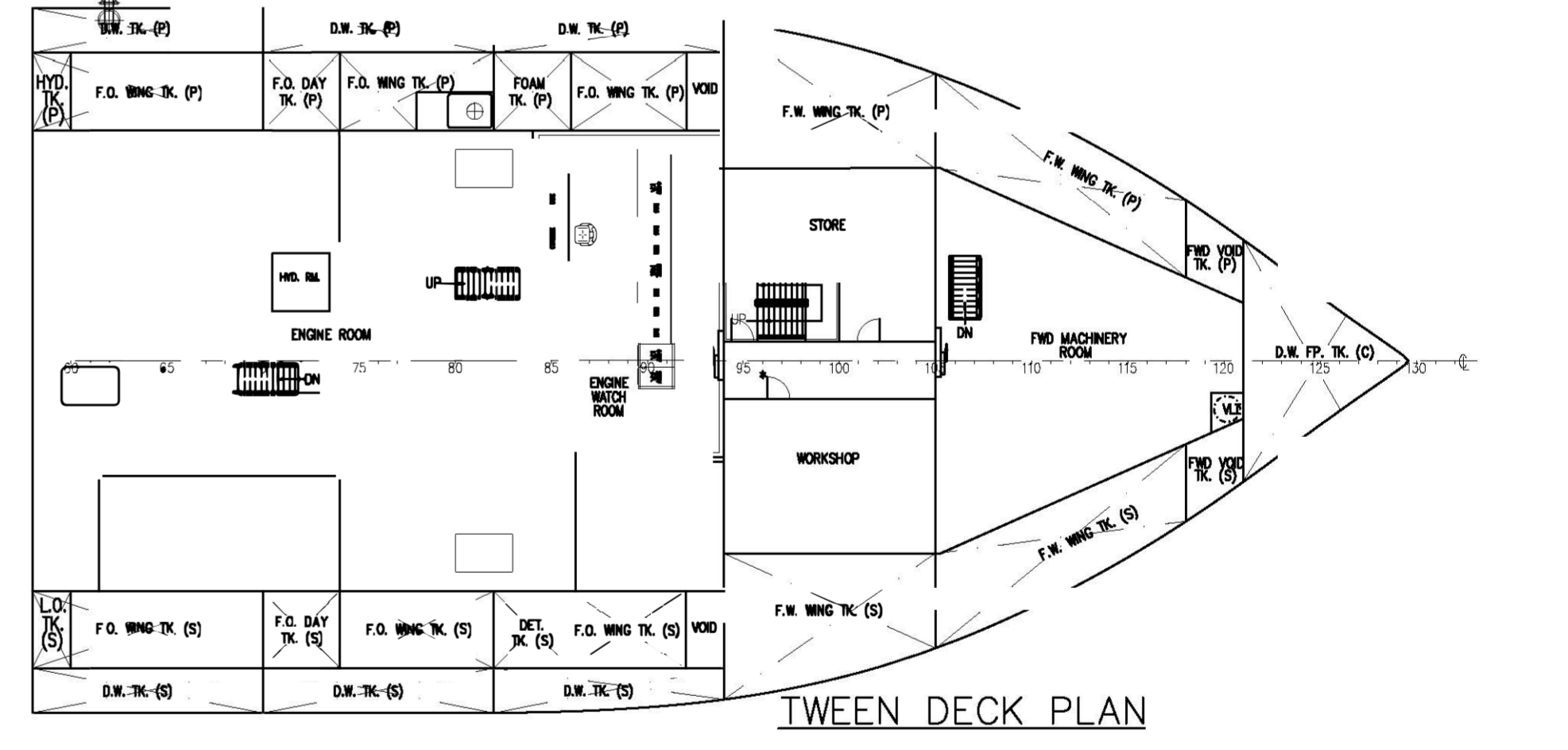
NAV. BRIDGE TOP DECK



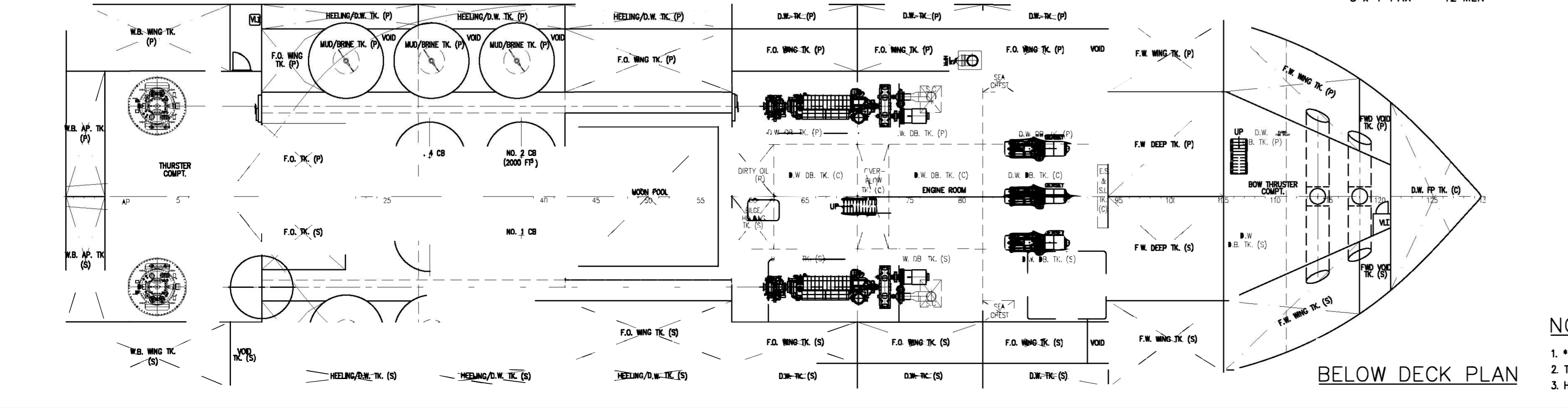
UPPER DECK PLAN



MAIN DECK PLAN



TWEEN DECK PLAN



BELOW DECK PLAN

PRINCIPAL DIMENSIONS

LENGTH (O.A.)	85.000 M
LENGTH (W.L.)	81.128 M
LENGTH (B.P.)	77.750 M
BEAM (MLD.)	22.000 M
DEPTH (MLD.)	8.000 M
DESIGN DRAFT (MLD.)	6.300 M
FUEL OIL	1150 M ³
FRESH WATER	740 M ³
DRILL WATER	1750 M ³
WATER BALLAST	280 M ³
HEELING/DRILL WATER TANK	440 M ³
MUD/BRINE	410 M ³
DRY BULK TANKS (4x2000 FT ³)	226 M ³
CLEAR DECK AREA	730 M ²
DECK CARGO (DECK LOADING=7.5T/M ²)	800 TONS
MAIN PROPULSION ENGINE	2x3000 PS
SPEED (TRIALS)	12.5 KNOTS
COMPLEMENT	200 MEN
CREW	24 MEN
SPECIAL PERSONNEL	176 MEN

CLASS & NOTATION
ABS + A1 @ OFFSHORE SUPPORT VESSEL(SUPPLY)
HNLS, FFV1
+ AMS, ACCU, DPS-2, SPS, RW, HELIDK

NOTE:

- * APPROPRIATE MEANS TO BE PROVIDED TO AVOID INJURY TO PERSON IN THE CORRIDORS
- THE MESS ROOM IS DESIGNED FOR 47 PERSONS TO USE IT AT ONE TIME
- HEELING/D.W. TANKS ARE NOT DEDICATED SEAWATER BALLAST TANKS

ITEM	DETAILS OF MODIFICATION	BY	DATE
PROJECT 85m SUBSEA SUPPORT/MAINTENANCE VESSEL			
TITLE GENERAL ARRANGEMENT			
CLASSIFICATION			
DRAWN	CHECKED	SCALE	DRAWING NUMBER
28-5-11		1:200	KCM/Q665(B)-G1
			REV.
			3-