

**Technical Specifications of Developed Lift-boat  
Class 215' - Available for Charter**

**Dimensions:**

Length Overall	137'
Length (Barge Only)	134'
Beam Overall	80'
Beam (Barge Only)	78'
Depth (Barge Only)	10'
Design Draft	11.5'
<b>Open Deck Area</b>	<b>6,300 Sq.Ft</b>

**Generators & Capacities:**

Engines	Two (2) CAT C6.6
Generator	Two (2) 158 KW
Fuel	17,841 Gallons
Potable Water	20,896 Gallons

**Hull Characteristics & Legs:**

Gross Tonnage	195
Net Tonnage	132
Max Deck Cargo	1,252,541#
<b>Number of Legs</b>	<b>3</b>
Length	215'
Size	72' Diameter
Wall Thickness	1" X 1-1/4" Braced Inside

**Propulsion:**

Main Engines	Two (2) CAT - C32
Rated HP	2,000
Reduction Gear	Twin Disc MGX 5225

**Crane (Nautilus) Hydraulic:**

Capacity	50 Ton & 175 Ton
Boom Length (50 Ton) Boom	Telescopic 100'
Length (175 Ton)	Fixed 100'

**Estimated Speed:**

Eight (8) Knots



**Pads & Jacking System:**

Length	32'
Width	16'
<b>Depth</b>	<b>24'</b>
Configuration	4 Way Slipped
<b>Max. Working Water Depth</b>	<b>175'</b>
<b>Max. Sea Conditions</b>	<b>5'</b>
	(Jacking Up or Down)

**Electronics:**

VHF  
SSB  
Fathometer  
Tilt Alarm  
GPS  
Radar Loud  
Hailer  
DSS TV

**Available Berths:**

Excluding Crew **36**

DIMENSIONS

LENGTH OVERALL 137'  
 LENGTH BARGE ONLY 124'  
 BEAM OVERALL 80'  
 BEAM BARGE ONLY 78'  
 DEPTH BARGE ONLY 17'  
 DEPTH BECK AREA 2300 33/4"

HULL CHARACTERISTICS

GROSS TONNAGE 153 TONS  
 NET TONNAGE 132 TONS  
 MAX BECK CAPAC 1,990,750 LBS.

LEGS

NUMBER 3  
 LENGTH 215'  
 SIZE 78" DIA.  
 WALL THICKNESS 1" & 1-1/4"

PADS

LENGTH 20'  
 WIDTH 18'  
 DEPTH 14"  
 CONFIGURATION 4-WAY SLOPED

SPEED

SEVEN AND ONE HALF (7.5)

JACKING

MAXIMUM VORWARD WATER DEPTH 17'  
 MAXIMUM SEA CONDITIONS 5'  
 (JACKING UP OR DOWN)

CRANE: HYDRAULIC

CAPACITY 100 TONS  
 BEEM LENGTH 120 TONS  
 CRANE TORQ 180' BEEM  
 CRANE CYCLE 2.00 MIN.

8" & 1 1/2" TOR  
 TELESCOPIC UP BEEM  
 180' BEEM  
 2.00 MIN. CYCLE

PROPULSION

MAIN ENGINES 2  
 HAWK HP 8500 HP  
 MANUFACTURE MAN

TWO (2) CAT C32  
 8500 HP  
 TYPE DIESEL FUEL

GENERATORS

ENGINES 2  
 GENERATOR

TWO (2) CAT D66  
 TWO (2) 1500 KW

CAPACITIES

1000  
 POTABLE WATER

APPROX 17,000 GALS.  
 APPROX 2,000 GALS.

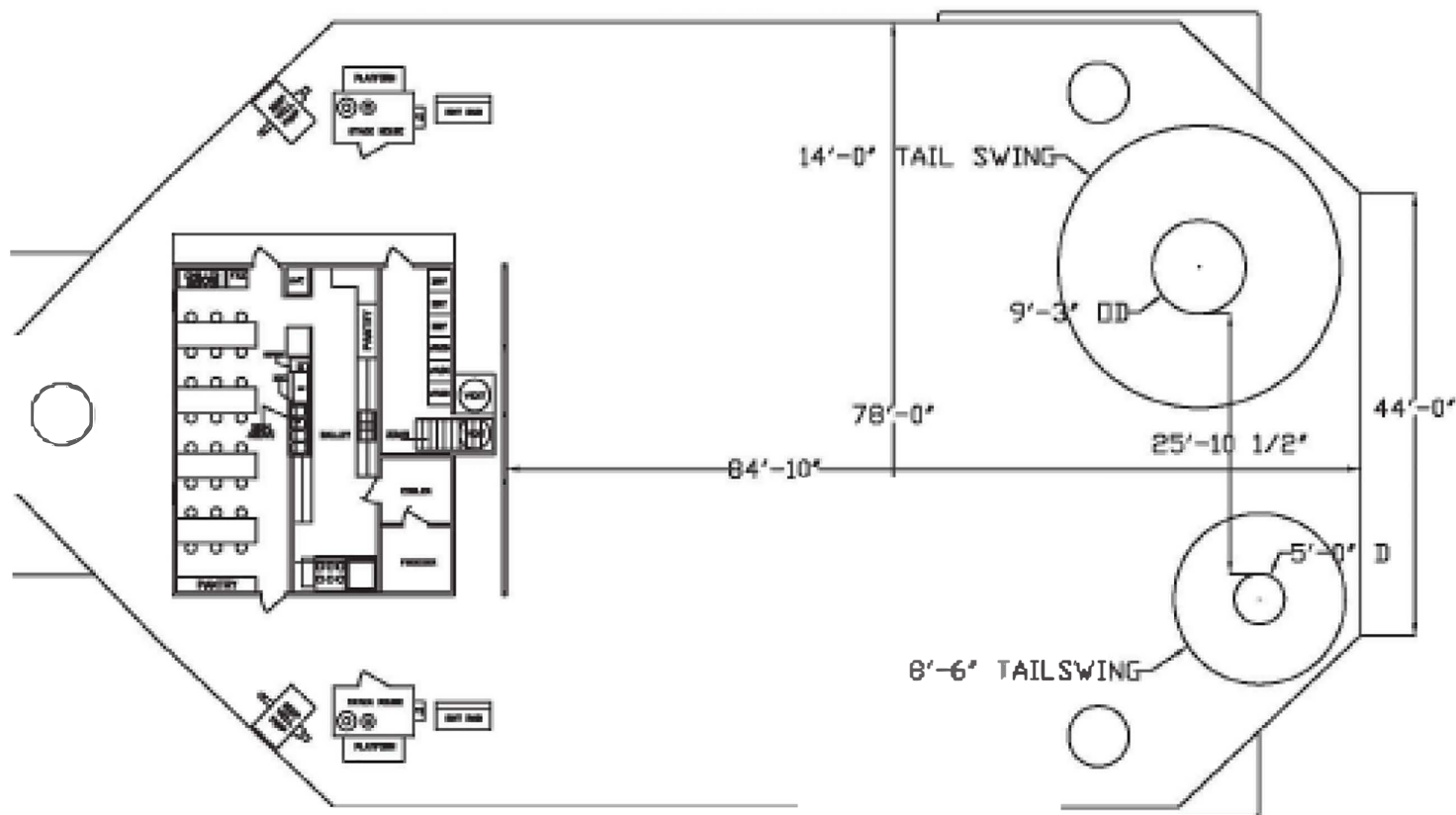
LIVING QTS

BERTHS 43  
 A/C & HEATERS  
 DANCE  
 HEADS  
 GALLEY  
 LAUNDRY

43 (INCLUDING BOAT CREW)  
 CENTRAL  
 COLOR TV, SOFAS, LOUNGE SEATS  
 20-GALL LEVELS  
 24 SEATS, REF., & FREEZ  
 200 HOURS, ICE MAKER  
 3 PAIRS- WASHER/DRYERS

ELECTRONICS

VME, SERIAL PLOTTER, LOAD HEDLER, TILT ALARM, GPS, RADAR



# LIFTBOAT CLASS 215'

## LIFTBOAT LOADING CAPACITIES

**175 TON / 100FT BOOM**  
(MAXIMUM SAFE WORKING LOAD)

MAIN HOIST BOOM RADIUS (FT)	MAIN HOIST BOOM ANGLE (degrees)	MAIN HOIST ON-BOARD RATING (X 1,000 lbs)	MAIN HOIST OFF-BOARD RATING (X 1,000 lbs)	AUX HOIST OFF-BOARD RATING (X 1,000 lbs)
26	78	350.000	233.333	18.000
30	76	350.000	233.333	18.000
35	73	350.000	233.333	18.000
40	70	350.000	233.333	18.000
45	67	318.000	212.000	18.000
50	64	283.726	189.151	18.000
55	60	255.685	170.457	18.000
60	57	232.320	154.880	18.000
65	54	212.551	141.701	18.000
70	50	195.609	130.406	18.000
75	46	180.928	120.619	18.000
80	42	168.084	112.056	18.000
85	38	151.884	101.256	18.000
90	33	136.959	91.306	18.000
95	27	122.382	81.588	18.000
100	21	107.329	71.553	18.000
105	11	89.106	59.404	18.000
107	0	72.427	48.285	18.000

### Auxiliary Hoist

- Maximum Safe On-board/ Off-board working load 18,000 lbs at all RADII
- Personnel rating all RADII, 3,500 lbs
- Personnel handling max. wave height 6 ft.

**LIFTBOAT LOADING CAPACITIES**

**50 TON 58 / 100 FT TELESCOPIC CRANE  
(MAXIMUM SAFE WORKING LOAD)**

**FULLY RETRACTED**

MAIN HOIST BOOM RADIUS (FT)	MAIN HOIST BOOM ANGLE (degrees)	MAIN HOIST ON-BOARD RATING (X 1,000 lbs)	MAIN HOIST OFF-BOARD RATING (X 1,000 lbs)	AUX HOIST OFF-BOARD RATING (X 1,000 lbs)
8.5	81	100.000	66.500	6.800
10	80	100.000	66.500	6.800
15	75	100.000	66.500	6.800
20	69	84.687	66.317	6.800
25	65	67.888	45.146	6.800
30	58	54.639	36.335	6.800
35	52	45.141	30.019	6.800
40	46	38.051	25.304	6.800
45	38	32.529	20.388	6.800
50	29	28.088	15.796	6.800
55	14	24.499	11.596	6.800
56.5	0	23.534	9.173	6.800

**EXTENDED**

MAIN HOIST BOOM RADIUS (FT)	MAIN HOIST BOOM ANGLE (degrees)	MAIN HOIST ON-BOARD RATING (X 1,000 lbs)	MAIN HOIST OFF-BOARD RATING (X 1,000 lbs)	AUX HOIST OFF-BOARD RATING (X 1,000 lbs)
15	82	38.953	25.904	6.800
20	79	34.666	23.053	6.800
25	76	31.351	20.880	6.800
30	73	28.581	19.006	6.800
35	70	26.213	17.432	6.800
40	67	24.285	16.150	6.800
45	64	22.635	14.549	6.800
50	60	21.182	13.133	6.800
55	57	19.942	11.928	6.800
60	53	18.850	10.867	6.800
65	50	17.185	9.345	6.800
70	46	15.541	7.893	6.800
75	41	14.197	6.723	6.800
80	37	12.891	5.622	6.800
85	31	11.659	4.612	6.800
90	25	10.334	3.579	6.800
95	16	9.160	2.637	6.000
98.5	0	8.452	1.622	5.600

**Auxiliary Hoist**

- All personnel ratings On-board/ Off-board
- Personnel rating all RADII, 2,700 lbs
- Personnel handling max. wave height 4.7 ft.