

Accommodation Crane Barge

8 Point Mooring Snubbing Support Barge

General Description

Type of Vassal.....Accommodation Work Barge.
FlagMongolia
Class.....OMCS.

Main Particulars

Hull Length.....63.378M.
Hull Width54.254M.
Hull Depth.....6.985M.
Hull Light Ship Draft.....1.65M.
Hull Design Draft.....3.66M.
Static Bollard Pull (Adverse Condition)64.97 MT @ 75% Tug Efficiency.
Static Bollard Pull (Stable Condition)41.22 MT @ 75% Tug Efficiency.
Person on Board.....100 Men.

Tank Capacities

Potable Water.....2 x 144.2 MT.
Drill Water4 x 1369.0MT.
Fuel Oil.....3 x 566.0MT.
Preload.....14 x 5686.7MT.
Misc. Service Tanks.....7.7MT.
Mud Pits.....5 x 282.6MT.
Reserved Mud Pits.....158.46MT.
Mud Process Tanks.....83.9MT.
Sack Storage Mud.....85M3.

Deck Loading Capacities

Main Deck(Except Anchor winch Areas).....16.7 KN/M2
Anchor Winch Areas(Closed Leg wells).....99.64KN/M2
Quarters Deck & Walkways.....9.5KN/M2.
Control House & Quarters Roof.....4.3KN/M2
Pipe Rack-Deck25.8kn/m2
Pipe Rack-Beams.....7.44MT/M

Firefighting Facilities

Fire Pump#1.....Jugo turbina, Maters RSL 125.
Fire Pump#2.....DESMI Pump.
Fire Hydrant Station.....18 Nos Throughout the Barge.

Barge Power

Main Engine with Generators2 x Caterpillar 3516B-HD Diesel Engine.
 2 x Kato Generators.600VAC @60HZ.
Emergency Engine with Generator.....1 x Cat Model D3508 Diesel Engine,840HP
 1 x Cat SR4 Generator, 700KVA, 440V, 841 amps.

Mud System

Mud Pump.....2 x National 12-P-160 Triplex Pump.
Shale Shaker.....Brandt duel tandum.
Mud Cleaner.....1 x Brandt DMC-20 Duel.
Degasser.....Swaco 30-225 skid mounted degasser with 6" suction & discharge.
Mud Pit Agitator.....2 x Lightening Agitator 85Q20, 15" X 7.9"X 8.9", 20HP Motors
 2 x Lightening Agitator 85Q20, 15" X 16.6"X 8.9", 20HP Motors
 1 x Rumba Agitator 10.5" X 4.6"X 8.9", 3HP Motors
Auxiliary Pumps.....Mission Magnum 6"x8"x10.5" Centrifugal Pumps,100 HP Motor.
 Mission Magnum 5"x6"x10.5" Centrifugal Pumps,75 HP Motor.
 Mission Magnum 5"x6"x10.5" Centrifugal Pumps,100 HP Motor.

Air System

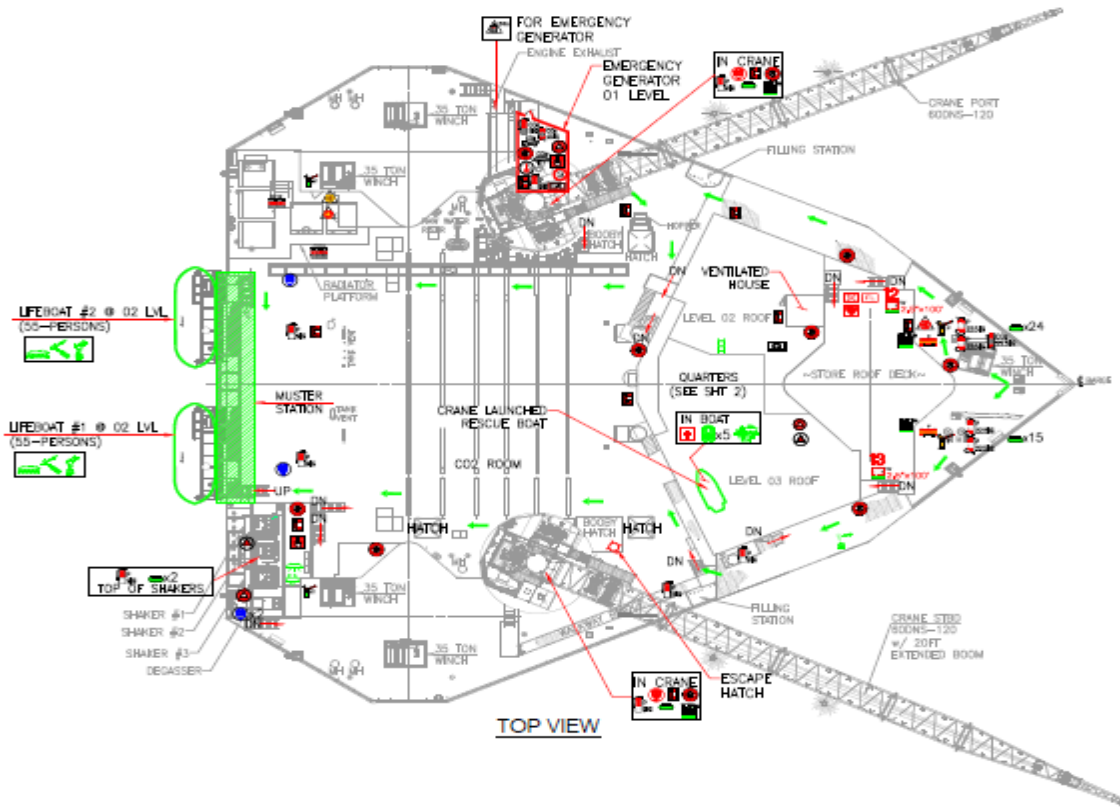
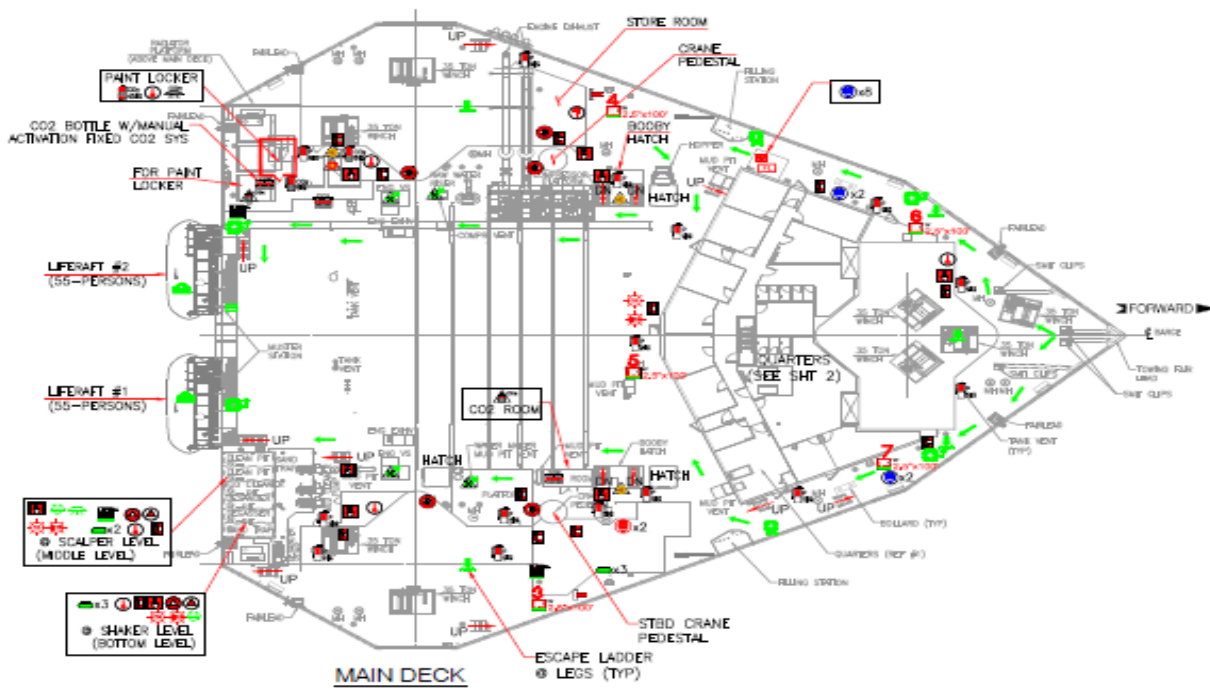
Air Dryer.....1 x 2040.38 m3/hr.
Air Receiver in engine room.....1 x 2 m3.
Air Receiver in air compressor room1 x 4 m3.

Mooring System

Forward side.....4 x 35 MT Winches with1200m of 36mm dia steel wire rope.
Aft side.....4 x 35 MT Winches with1200m of 36mm dia steel wire rope.

Crane

Port Side.....NOV 60-DNS-120 with 120ft.Boom Length
STBD Side.....Modified NOV 60-DNS-120 with 140ft.Boom Length



These specifications are intended for general reference purposes only, as actual equipment and specifications may vary based upon subsequent changes, the contract situation and customer needs.