

Principal Particulars

Flag	Indonesia
POR	Jakarta
YOB	2017
Builder	Keppel Nantong Shipyard Co., Ltd
Designer / Design	Marine Technology Development (MTD™)
Length OA	32.00 m
Breadth Moulded	11.50 m
Depth Moulded	5.20 m
Draft Design	max 5.52 m
Gross Tonnage	< 500 MT
Net Tonnage	474 MT
Bollard Pull	65 T
Max speed	11.5 knots
Classification	ABS + A1, +AMS, (E), TOWING VESSEL, FIRE FIGHTING VESSEL CLASS 1, RW, BP(65MT)

Machinery

Main Engine	2 x Niigata 6L28HX, 5000 PS @ 750rpm
Auxiliary Generator	3 x Perkins 120 eKw
Azimuth Thrusters	2 x Niigata ZP-41 in 19A Nozzles, dia 2700 mm

Deck and Towing / AH Equipment

Anchor Windlass	Stockless Bower type, 2 x 660 kg
Chains	Stud link type, 302.5m x 24mm dua (Grade 2)
Fore Winch	Anchor windlass/towing winch, 10 t x 20m/min at 1 st layer 150 tons brake capacity
Aft Towing Winch	Towing winch, 20/6.5 t x 10/30 m/min at 1 st layer 180 tons brake capacity Remote/manual controlled

Navigation Equipments

SSB Radio, Radar, Auto Pilot, Echo Sounder, VHF, GPS, Magnetic Compass, AIS, GMDSS A2, Inmarsat C, SART & EPIRB, Public Address

Cargo Capacities

Fuel Oil	226.60 m ³
Fresh Water	55.20 m ³
Ballast Water	103.60 m ³
Lube Oil	6.20 m ³
Sludge	4.30 m ³
Bilge	2.90 m ³
Sewage	4.30 m ³
Foam	7.50 m ³
Dispersant	2.90 m ³

Emergency Responses and Fire Fighting Capabilities

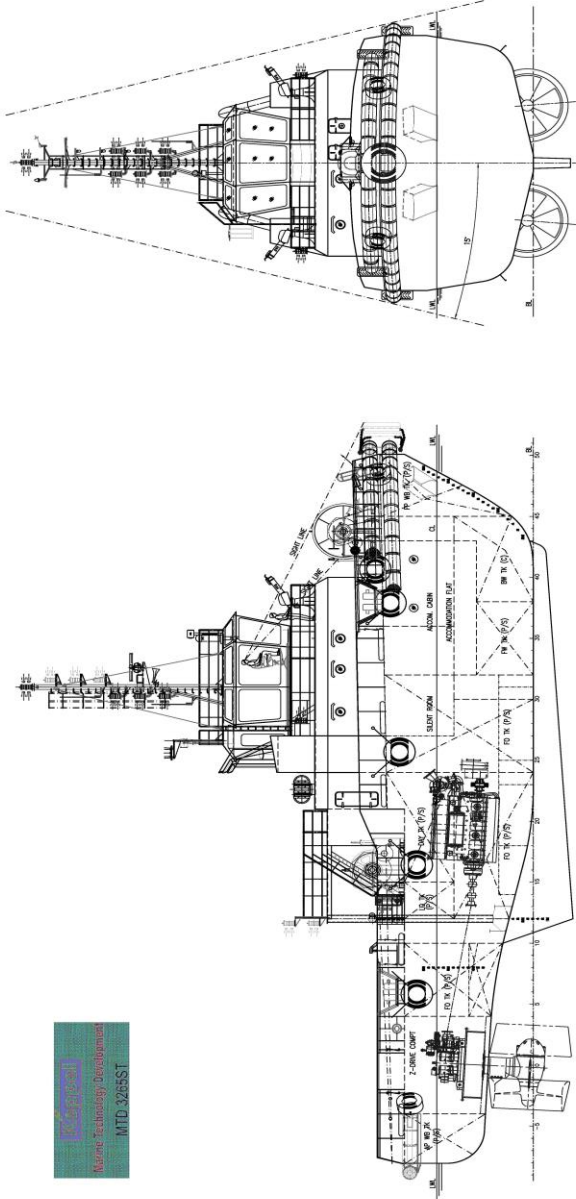
FIFI set	1 x 2400 m ³ /hr
Fire monitor	2 x 1200 m ³ /hr
Water curtain system	

Discharge Rate

FO transfer pump	7 m ³ /hr @ 35 m.w.c
LO transfer pump	-
Bilge/ballast pump	60 m ³ /hr @ 35 m.w.c

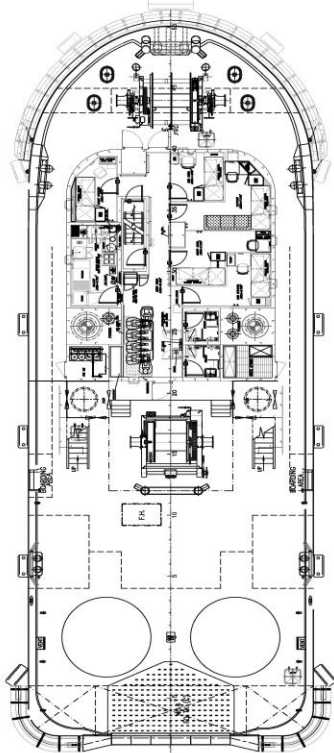
Accommodation

Total	12 pax
-------	--------

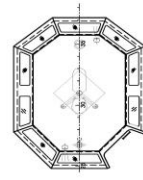


PROFILE

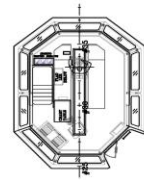
LOOKING AFT



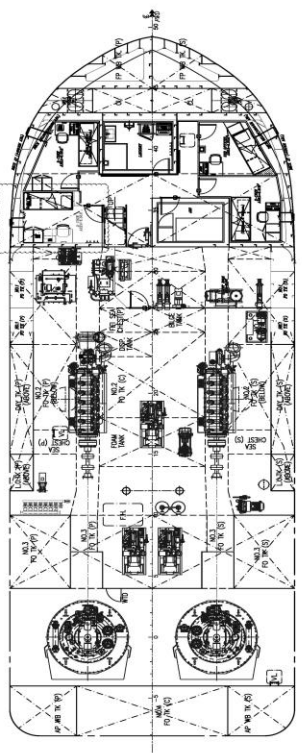
MAIN DECK



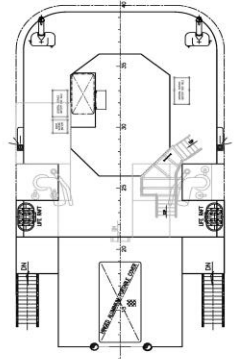
WHEELHOUSE TOP



BRIDGE DECK



BELOW MAIN DECK



BOAT DECK

PRINCIPAL PARTICULARS
 LENGTH O.A. APPROX. 32.00 M
 OWNER _____
 LENGTH B.P. 26.785 M
 BEAM MLD 11.50 M
 DEPTH MLD 5.20 M
 SUMMER DRAFT MLD. HULL 3.90 M
 SUMMER DRAFT MLD. HULL 4.42 M
 SUMMER DRAFT (EXT) 5.52 M
 FRAME SPACING THROUGHOUT 500 mm
 COMPLEMENT 12 MEN

ALTERATIONS

REV.	AMENDMENT DETAILS	DATE	BY
A	ISSUED FOR COMMENTS	12/06/2014	SJS
A	ISSUED FOR COMMENTS	16/06/2014	SJS
A	ISSUED FOR COMMENTS	26/06/2014	SJS
A	ISSUED FOR COMMENTS	18/07/2014	SJS
A	ISSUED FOR APPROVAL	18/11/2014	ANK
A	REVISED AS PER DESIGN PROGRESS AND	06/03/2015	SJS
A	ISSUED FOR CONSTRUCTION	13/03/2015	SPW
A	REVISED AS PER AIS COMMENTS AND	17/04/2015	SPW

REFERENCE PLANS

REF.	DWG/DOC NO	DRAWING/DOCUMENT TITLE	BY

PRINT RECORD

NO. PRINTED	A. APPROVAL	C. CONSTRUCTION	I. INFORMATION	O. ORIENTATION

APPROVED BY: _____ DATE: _____
 OWNER _____
 CLASS _____
 CLASS: ABS A1, AMS, @, Towing Vessel, Fire Fighting
 Vessel Class 1, RM, BP(GSM).
 OWNER: _____
 BUILDER: KEPPEL MARINE SHIPYARD CO. LTD.

Marine Technology Development

Marine Technology Development Pte Ltd
 100, Cross Street, Singapore 048135
 TEL : (65) 6808 4215
 Fax : _____

MTD 3265ST

Date:	12/06/2014	Scale:	1:100 @ A1
Revised By:	SJS	Mat No.:	RNS 1047/1048
Drawn By:	SJS	MTD Proj. No.:	P310
Checked By:	SJS	Block Design Appr.:	ANK
Job:	65 TONNES BOLLARD PULL ASD TUG		
Rev:	GENERAL ARRANGEMENT		
Drawn No.:	MTD P310-D100	Sheet:	1 of 1 Sheets

COPYRIGHT © 2005-2014 Marine Technology Development Pte Ltd. All rights reserved.
 This document and its contents are the confidential property of Marine Technology Development Pte Ltd. It is loaned to you for the limited purpose of assisting you with operation and maintenance of the equipment. It is not to be reproduced, stored in a retrieval system, or transmitted in any form or by any means, electronic, mechanical, photocopying, recording, or by any information storage and retrieval system, without the prior written consent of Marine Technology Development. It may not be reproduced in whole or in part without the prior written consent of Marine Technology Development. It is to be discarded to prevent not having used or disassembled for the item and it is to be destroyed if not used.