

Small Harbor Tug

Build 2023

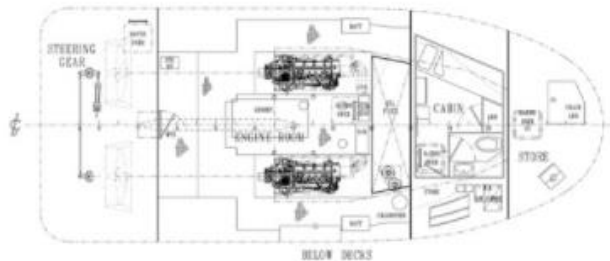
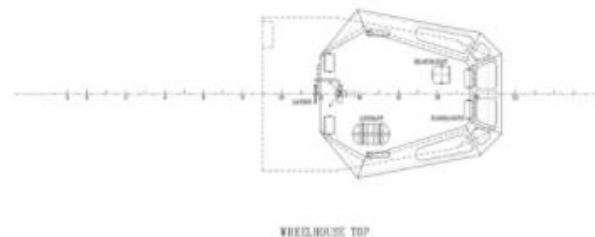
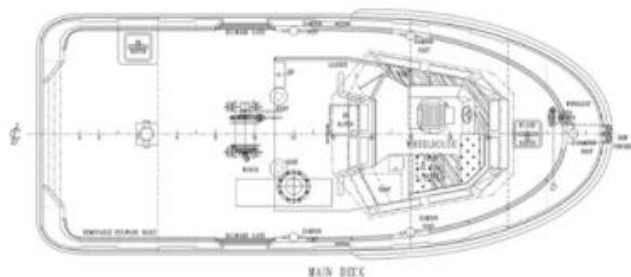
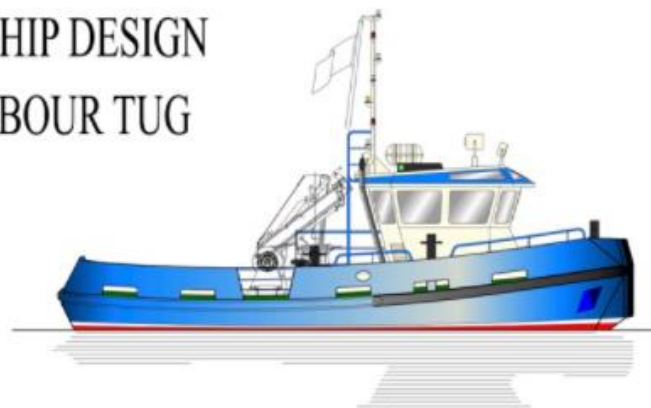
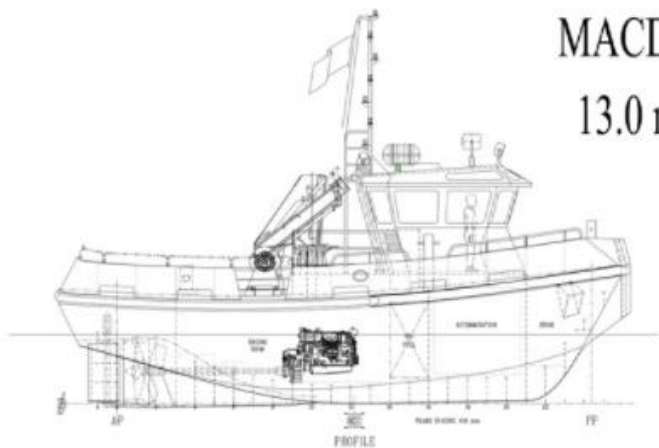
Dims: LOA 13.40m x BEAM 5.40m x MAX DRAFT 1.90m

VAGROUP

Available for Sale or Long Charter in Europe

MACDUFF SHIP DESIGN

13.0 m HARBOUR TUG



PRINCIPAL DIMENSIONS

LENGTH O.A. (Hull)	13.00 m
LENGTH B.P.	10.97 m
BREADTH MLD.	5.40 m
DEPTH MLD.	2.47 m

PRINCIPAL DIMENSIONS

Length Overall (Extreme)	: 13.40 m
Length Overall (Hull)	: 13.00 m
Length B.P.	: 10.97 m
Breadth Moulded	: 5.40 m
Depth Moulded	: 2.47 m
Max. Draft	: 1.90 m

CAPACITIES

Oil Fuel	: 4700 liters
Fresh Water	: 137 liters
Crew	: 4 persons

PERFORMANCE

Bollard Pull	: 10.0 tons
Speed @ 100% MCR	: 9.0 knots

ENGINE MACHINERY

Main Engines	: 2 x Doosan L126TIH : 2 x 360 HP @ 2000 rpm
Gearboxes	: Dongii DMT 170HL : ratio 4.48:1
Propellers	: Fixed in Kort nozzle : dia. 1300 mm
Diesel Generator	: 1 x 50 kW, 1500 rpm

DECK MACHINERY

Deck Winch	: SWL 7.5 tons
Deck Crane	: SWL 900 kg @ 8 m
Towing Bitt	: SWL 10 tons

DESIGNER : Macduff Ship Design Ltd.**OWNER** :**SHIP NAME** :**VAGROUP**











