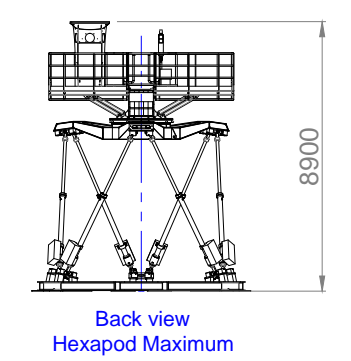
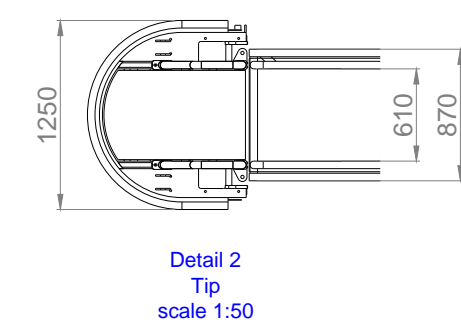
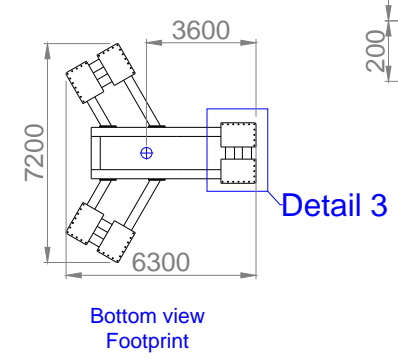
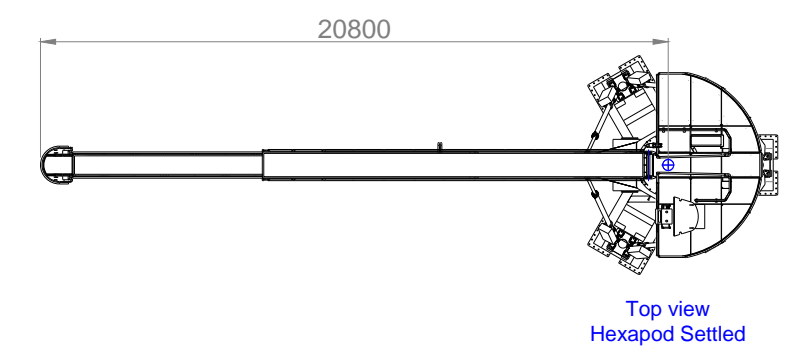
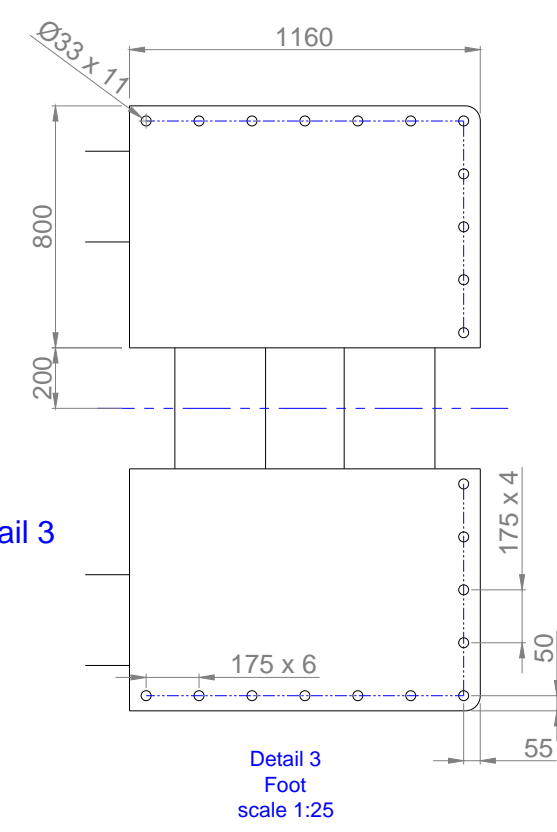
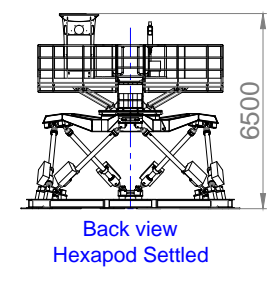
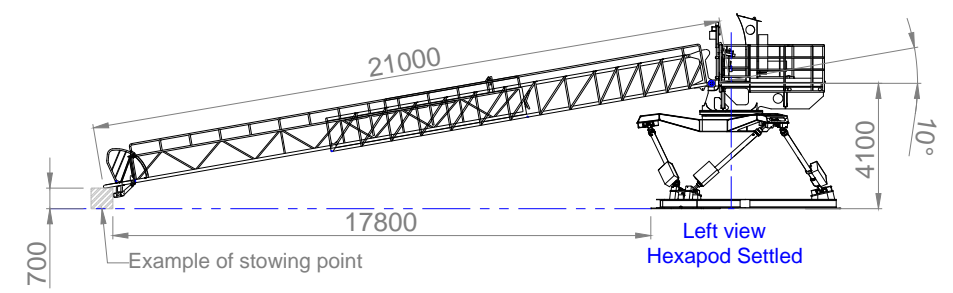
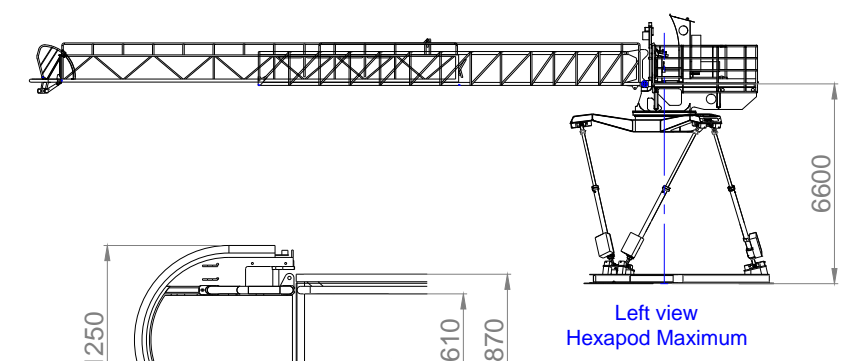
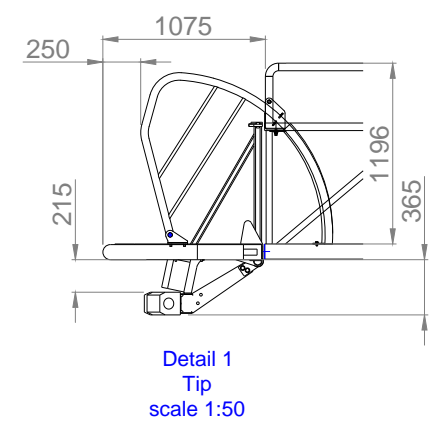
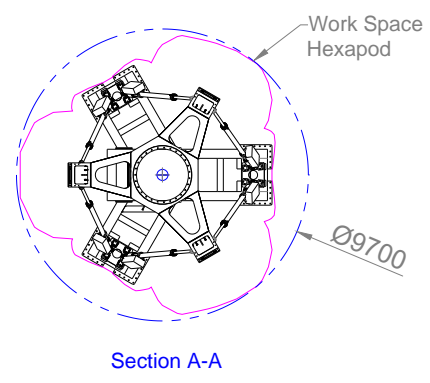
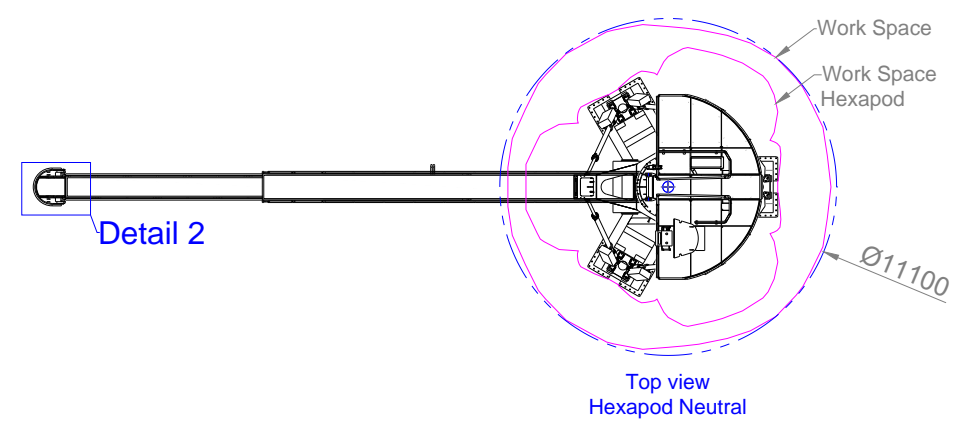
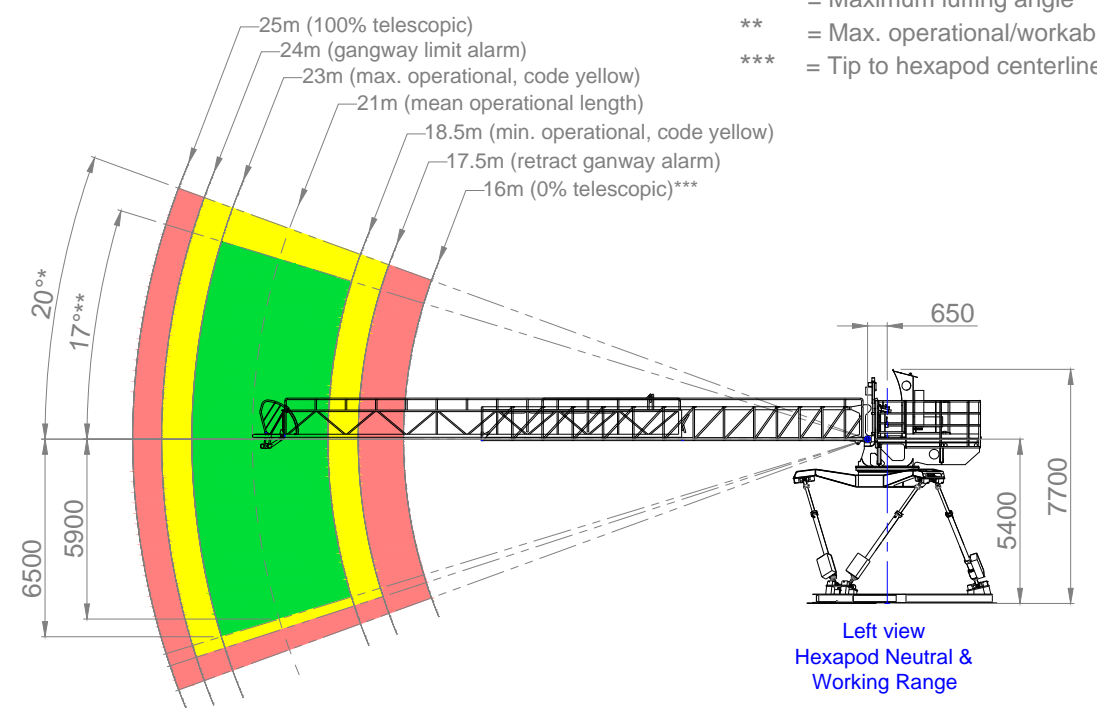
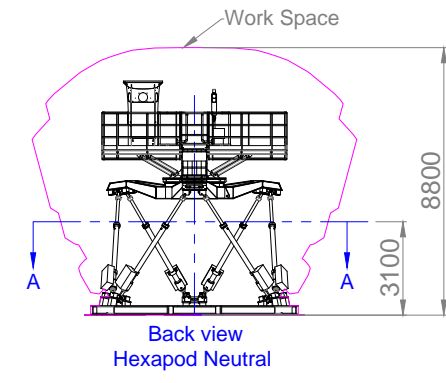
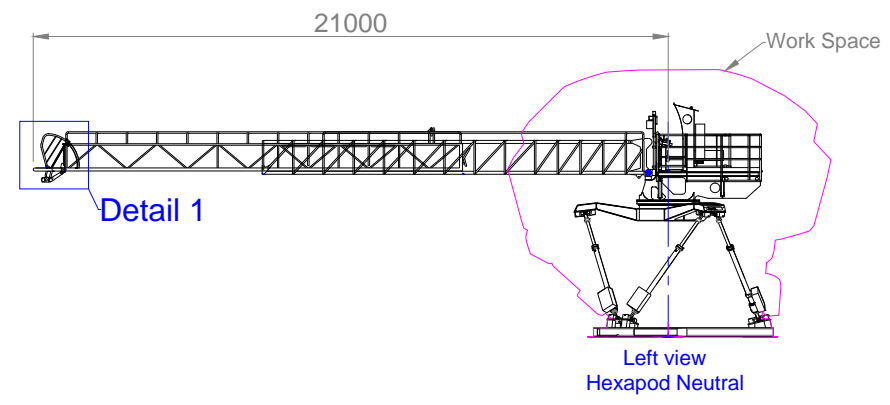



- \* = Maximum luffing angle
- \*\* = Max. operational/workable angle
- \*\*\* = Tip to hexapod centerline distance



0.1	29/05/2019	First Issue	WD	GN	SE	Production
Rev.	Date	Description	Drawn	D&D Appr.	SE Appr.	Production Appr.
			Released			
			<small>Fabrication according to Ampelmann document: 5JNDXPVNS3R3-5-3926 *GENERAL SPECIFICATION FOR FABRICATION AND WELDING*</small>			
Drawing Nr.	WRD-A-G25		This document is property of Ampelmann Operations by for which all rights are reserved, including those relating to patents or registered trademarks			
Project	Working Range Drawings		Scale 1:250	Unit mm	Size A3	
Description	AG25 - Original Star - PT			Sheet 1/1	Proj.	
Project Code	Q-0112					