

DPLB Available for Sale



Year Built : 2009
Flag : TBD
Class : ABS ✕A1, Barge

This Derrick Pipe Lay Barge has just passed her 5 year Class survey and is ready to work. She is equipped with a 1,100MT AmClyde crane, clear deck area of 1,600m² and accommodation for up to 300 men.

This barge is suitable for operations such as:

- Pipe-laying Operations
- Offshore Operations/
Windmills Support
- Flotel

MAIN PARTICULARS

Principal Dimensions

Length Overall	127.40m
Breadth Moulded	38.90m
Depth Moulded	9.00m
Design Draft	6.00m
Gross Tonnage	20,299T
Net Tonnage	6,089T
Deck Load	12.5 T/m ²
Clear Deck Area	1,600m ²
Covered Work Area	704m ²
Timber Deck Sheathing Area	1,400m ²

Helideck (For S-92 Sikorsky)

D-value	25m
T-value	12.0T

Capacity

Fuel Oil	4,041.7m ³
Fresh Water	2,910.6m ³
Ballast Water	14,471.4m ³

Accommodation

1 man cabin x 8	8 men
2 men cabin x 14	28 men
4 men cabin x 66	264 men
Total	300 men
Conference Room	1
Mess Room	1
Recreation Room	2
Hospital	1

MACHINERIES

Main Machinery

Main Generators	8 x 620kW, 440V/3ph/60Hz (Caterpillar 3412C)
Emergency Generator	1 x 500kW (Caterpillar C4.4)
M60 Crane Generators	3 x 1900kW, 690V/3ph/60Hz (Cummin QSK60DM)

Deck Machinery

Mooring Winches	8 x 130T
Anchors	8 x 12T Delta Flipper
Anchor Wires	8 x Ø 52mm x 1,500m

Main Crane - AmClyde M-60

Main Hook Capacity	1,100T @ 28m Radius
Auxiliary Hook Capacity	275T @ 55m Radius
Whip Hook Capacity	60T @ 75m Radius
Certified Man-Riding	Yes

Deck Crane

Manitowoc 777 crawler type	
Main Hook Capacity: 24T @ 6.1m to 8m Radius	
Auxiliary Hook Capacity: 3.7T @ 34m Radius	

EQUIPMENTS & ELECTRONICS

Pipe-lay Capability

Pipe Diameter	4" to 60"
Tensioners	2 SAS x 60T horizontal type
A/R Winch	1 SAS x 120T with tension Wire Rope Ø 64mm x 650m
NDT	1 x radiography or U.T.
Field Joint Station	1 set
Pipe Line Stinger	31.7m ladder-type winch adjustable
Welding Stations	5 x manual or automatic
Coating Station	2 Sets
Pipeline Stinger	1 Section, 31.7m
Pipe Handling Davit	6 x 30T

Fire Fighting Equipment / Life Saving

Fire Fighting /GS Pumps	2 x 130m ³ /hr @ 80m head
Emergency Fire Pump	1 x 65m ³ /hr @ 65m head
Helideck AFFF	2 x Foam Monitors
25 person Life Rafts	36 Pcs x 25 Pax
Helideck Crash Kit	1 set
EEBD	8 sets
Rescue Boat	1 x 6 Pax rescue boat with light - 13 Pcs
Life Buoys	with 30m line - 5 Pcs with light and smoke - 2 Pcs
Life Jackets	600 Pcs
Smoke Detectors and Auto Sprinkler System	
Fixed CO2 Fire Extinguishing System	

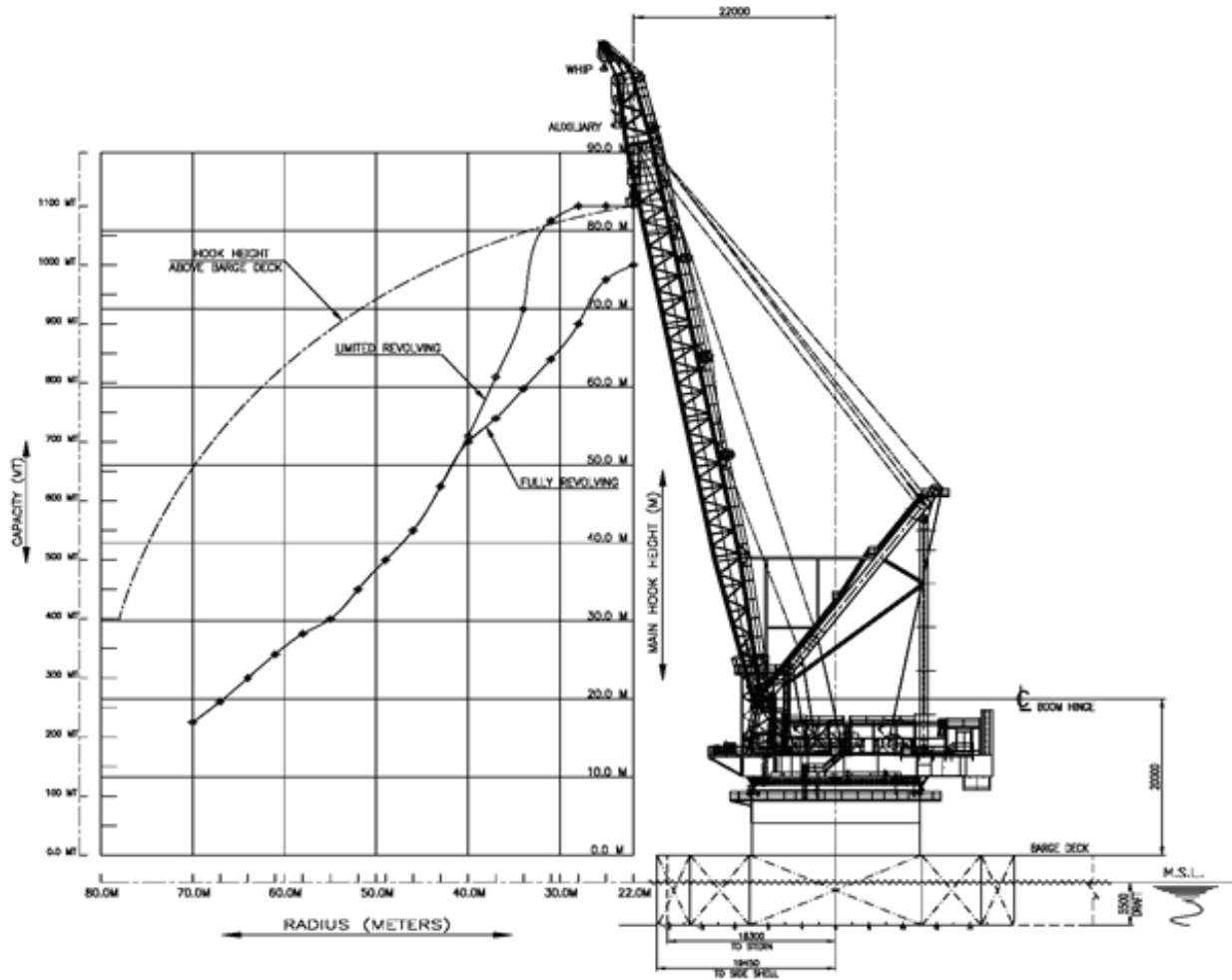
Navigation & Communication Equipment

GPS Satellite Navigator	1 set
Telephone system	1 set
VSAT	1 set
Gyro Compass	1 set
Navtex Receiver	1 set
Daylight Signal Lamp	1 set
Air Band Radio	1 set
VHF Marine Transceiver	13 sets
2-Way VHF Radios	3 sets
VHF Radiotelephones	2 sets
AIS	1 set
Inmarsat C Station	2 sets
EPIRB	2 sets
SART	4 sets
Echo Sounder	1 set
Magnetic Compass	1 set
MF/HF Transceiver	1 set
Public Address / PAGA	1 set
NDB	1 set
Satellite Phone	1 set
Radar	2 sets
Fleet Broadband 500	To be installed

Auxillary Equipment

Fresh Water Maker	2 x 75T/day
Oily Water Separator	1 x 5.7m ³ /hr (15ppm)
Sewage Treatment Plant	2 x IMO Approved Treatment Plants for 300 crews
Ballast Pump	2 x 2,200m ³ /hr @ 0.3MPa
Bilge Pump	2 x 220m ³ /hr @ 0.25MPa, KSB

General Arrangements

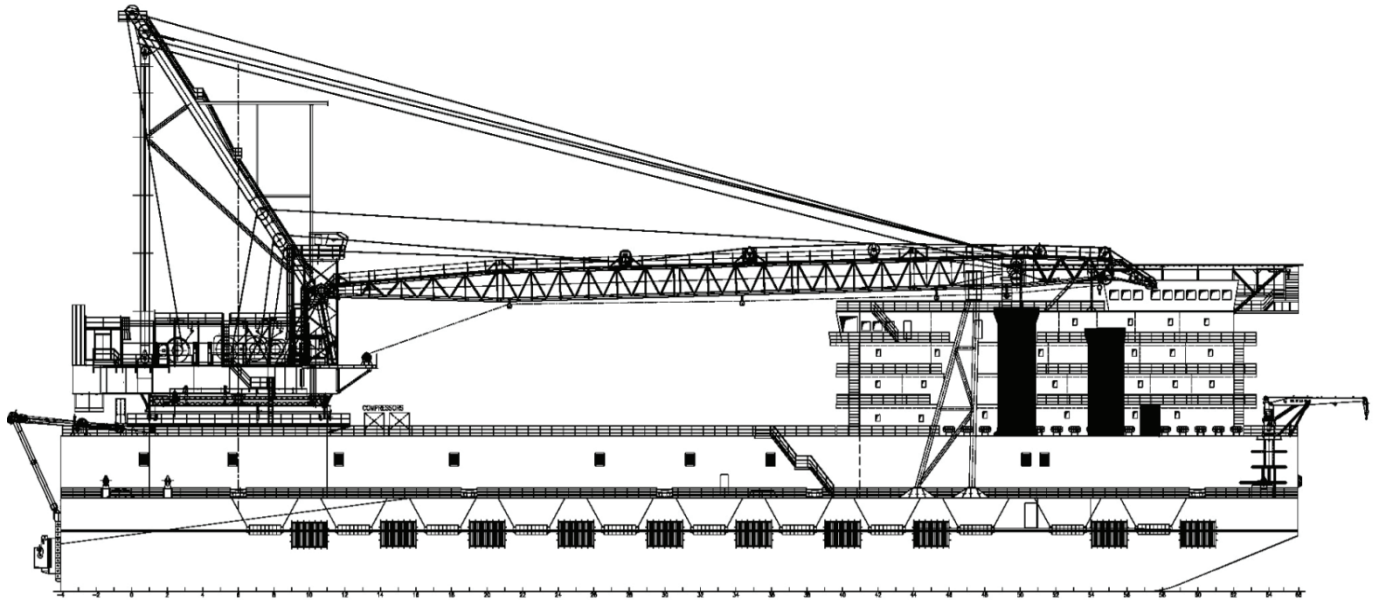


MAIN HOOK RATING CHART

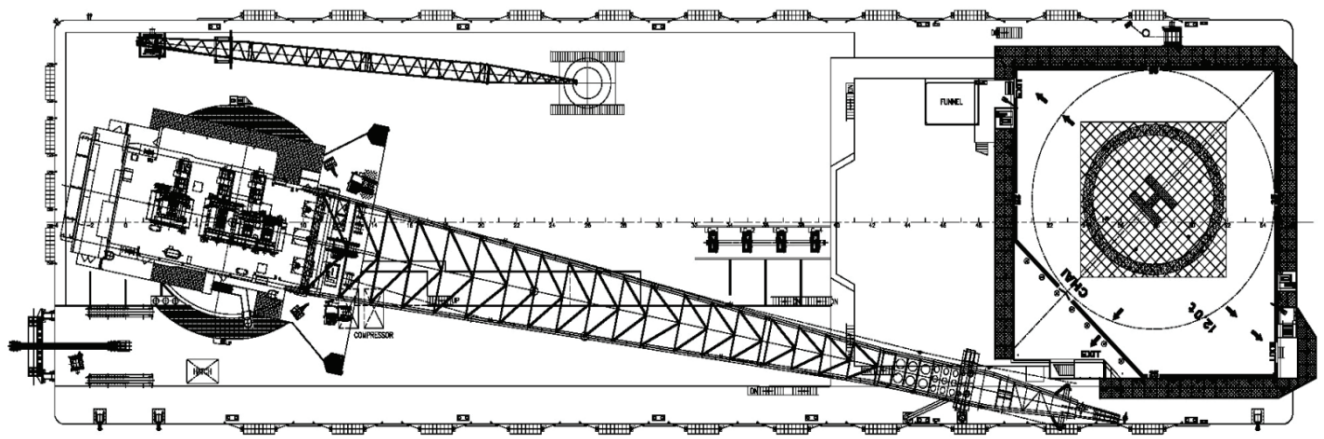
RADIUS (m)	360 DEGREE REVOLVING	360 DEGREE LIMITED REVOLVING
22.0 MIN	1000	1100
25.0	975	1100
28.0	900	1100
31.0	840	1075
34.0	790	925
37.0	740	810
40.0	700	710
43.0	625	625
46.0	550	550
49.0	500	500
52.0	450	450
55.0	400	400
58.0	375	375
61.0	340	340
64.0	300	300
67.0	250	250
70.0 MAX	225	225

AUXILIARY & WHIP HOOK RATING CHART

RADIUS (m)	AUXILIARY 360° REVOLVING	WHIP 360° REVOLVING
25.0 MIN AUX	275	-
30.0 MIN WHIP	275	60
35.0	275	60
40.0	275	60
45.0	275	60
50.0	275	60
55.0	275	60
60.0	250	60
65.0	225	60
70.0	175	60
75.0	130	60
80.0 MAX AUX	100	50
82.0 MAX WHIP	-	40



PROFILE VIEW



PLAN VIEW