

MPSV AVAILABLE FOR PRIVATE SALE

GENERAL SPECIFICATIONS

180 Man / DP2 / FIFI1 / 4 Point / 100 MT Crane / Moon Pool / Diving Support Vessel



180 Berths in en-suite cabins

DPS-2 Positioning System

Built 2015

4412 KW (6000 BHP)

100MT, Main Crane

Diving support vessel

FIFI-1

Helideck

4 Point Mooring System

Fitted with Gym, Offices, Recreation etc

Principal Particulars	
Flag	
Built	2015
Class	✕ A1, HELIDK, FFV 1, Offshore Support Vessel, SPS, (E), ✕ AMS, ✕ DPS-2
IMO No.	
Call sign	
Speed	13 Knots @ 100% MCR 11.5 knots Cruising Speed
Helideck	Suitable for Sikorsky S92 Helicopter

Dimensions	
Length Overall	78.00 m
Length B.P.	69.60 m
Beam	20 m
Depth	8 m
Design draft	6 m
G.R.T	4944
N.R.T	1483

Discharging Rates	
Fresh Water	1 x 120 m3/hr @ 90m head
Fuel Oil	1 x 120 m3/hr @ 90m head
Drill Water	1 x 120 m3/hr @ 90m head
Flow Meter	Provided for FO and FW

Accommodation	
1-Berth Cabins	6
2-Berth Cabins	17
4-Berth Cabins	35
Berths – Total	180
Hospital	1
Recreation/Movie	4
Office	1
Conference Room	1
Gym	1
Chiller/Freezer	24 m3 / 28m3
Water Maker	2 x 40 MT/day

Life Saving / Rescue Equipment / Pollution Control	
Life Boat	2 x 100 men, SOLAS certified capable of sailing 4 hr @ 6Kts
Life Raft & Davit	8 x 25 men, conforming to SOLAS convention
Fast Rescue Boat	2 SOLAS-certified type FRC
Antipollution	2 x 6m booms with 6 nozzles each.
Dispersant Tank	17 m3

Capacities	
Fuel Oil	1,300 m3
Potable Water	1,000 m3
WB/DW	2000 m3
Lube/Hydraulic	17.3 m3 / 32.5 m3
Sewage	67.5 m3
Bilge	32.5 m3
Deck Cargo Area	About 500 m2
Deck Strength	10 tons/m2
Deck load	500 ton

Machinery & Propulsion Equipment	
Main Engines	2 x 2206 kW (3,000 bhp) Niigata
Generators	2 x 640 kW diesel generators @ 440V, 3 Phase, 60Hz ,CAT C32 1 x 150 kW emergency diesel generator, with harbor function 2 x 1236 KW shaft alternator, 440V ,3 Phase, 60HZ
Propellers	2 x Azimuth Stern Drive, CPP
Bow Thruster	2 x Tunnel Thruster, 1050 hp, approx. 10 T, CPP

Mooring System	
Anchor Windlass	2 x 10MT @ 9m/min for chain 6MT @ 15 m/min to 30 m/min for mooring line
Anchor	2 x AC-14HHP stockless anchors stowed in anchor pockets, 2,640 kg each
Chain Cable	Total 550 m x 46 mm diameter grade U3 stud-link chain
Mooring Lines	4 x 180 m mooring rope, MBL 29MT
Tugger Winch	2 x 10MT @ 12 m/min, 200 m x 26 mm diameter wire
Capstan	2 x 5MT @ 15 m/min, variable speed control

4 - Point Mooring System	
Mooring Winch	4 Sets Drum Pull (1st Layer): - 50MT @ 10 m/min - 10MT @ 30 m/min Drum Capacity: - 1,500m x 42mm Brake Holding: - 77.1 MT (static)
Anchors	4 anchors, 5MT
Associated Equipment	Anchor Wire Fairleads, Anchor Racks
CCTV	All Winches and Deck

Dynamic Positioning System	
Type	Kongsberg, IMCO Class DP2
Reference Systems	1x Kongsberg DPS 232 1x Kongsberg DPS 132 1x Cyscan 1x HIPAP System 351 1x Radius 1000 2x Taut wire DP alert system, HMS100

Navigation and Communication	
Radar	2X Furuno
Gyro compass	Anschutz
Echo Sounder	Furuno
GPS	Furuno
Auto pilot	Anschutz
NAVTEX	Furuno
GMDSS	Furuno A1-2-3
EPIRB	McMurdo
Magnetic Compass	Lillie & Gillie

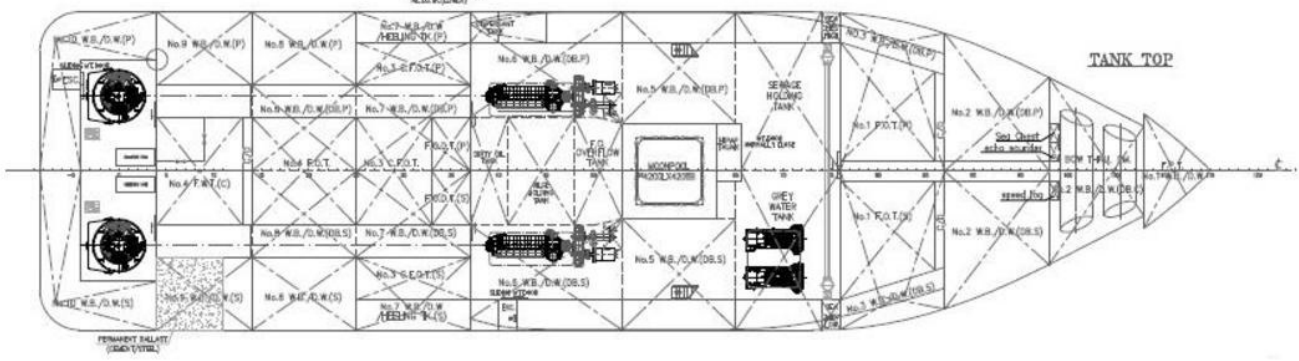
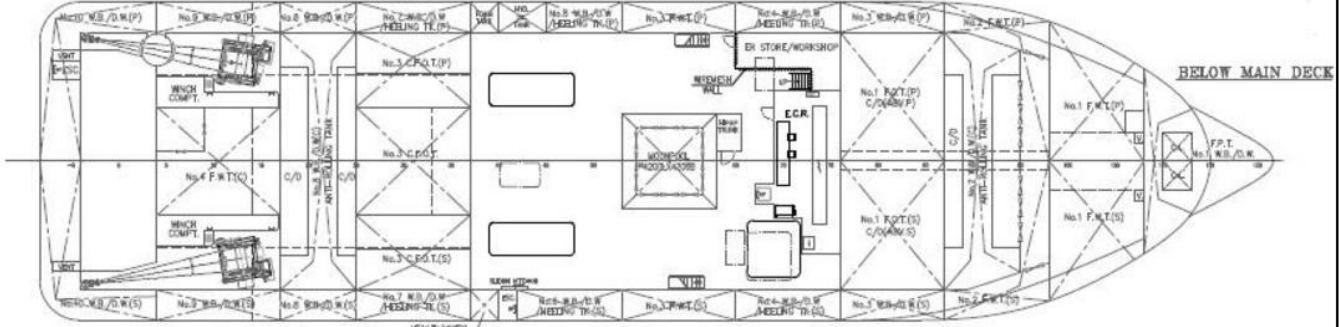
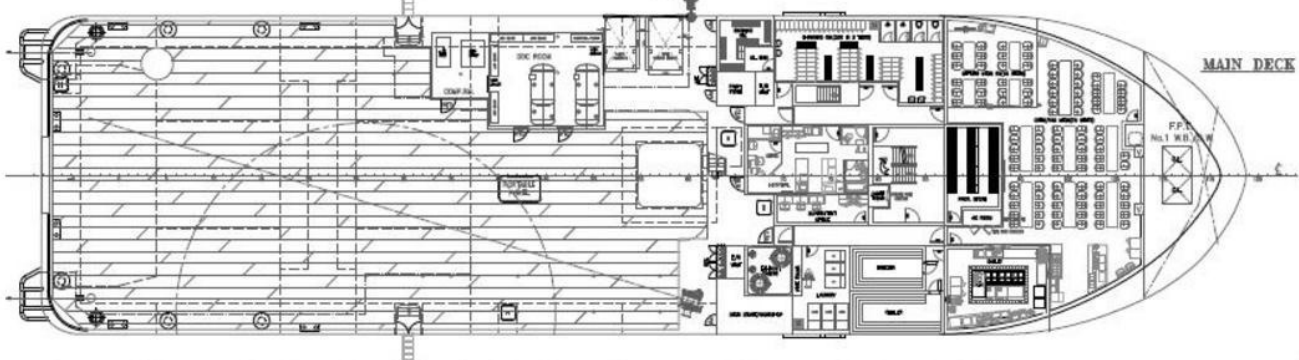
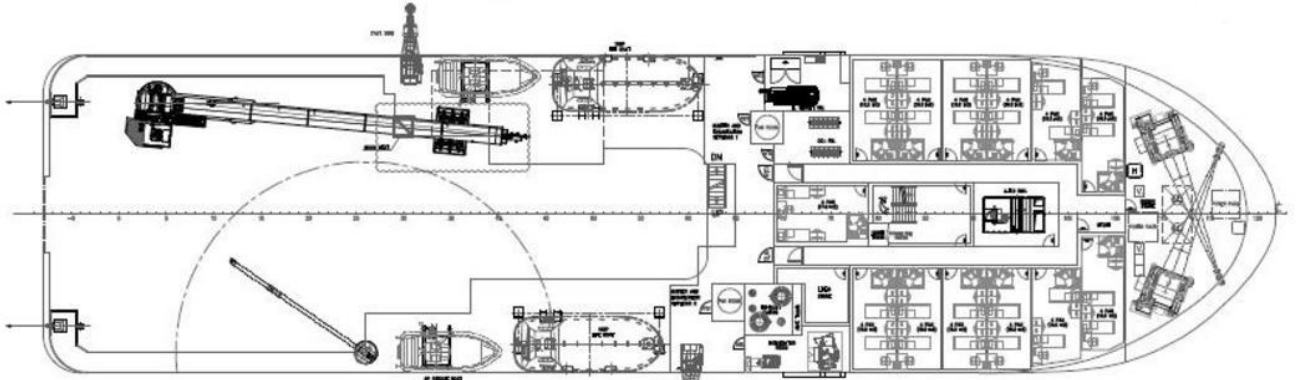
Diving Equipment (Optional)	
2 x DDC	
1 x Air Diving Panel	
2 x HP Compressor	
1 x LP Compressor	
2 x industrial compressors	
4 x Air Bank	

Crane	
Main Crane	1 x 100MT EBITCL60 Crane Main Hoist: - 99MT @ 4m Active heave compensative certified for man riding
Auxiliary Crane	1 x 3MT @ 12m

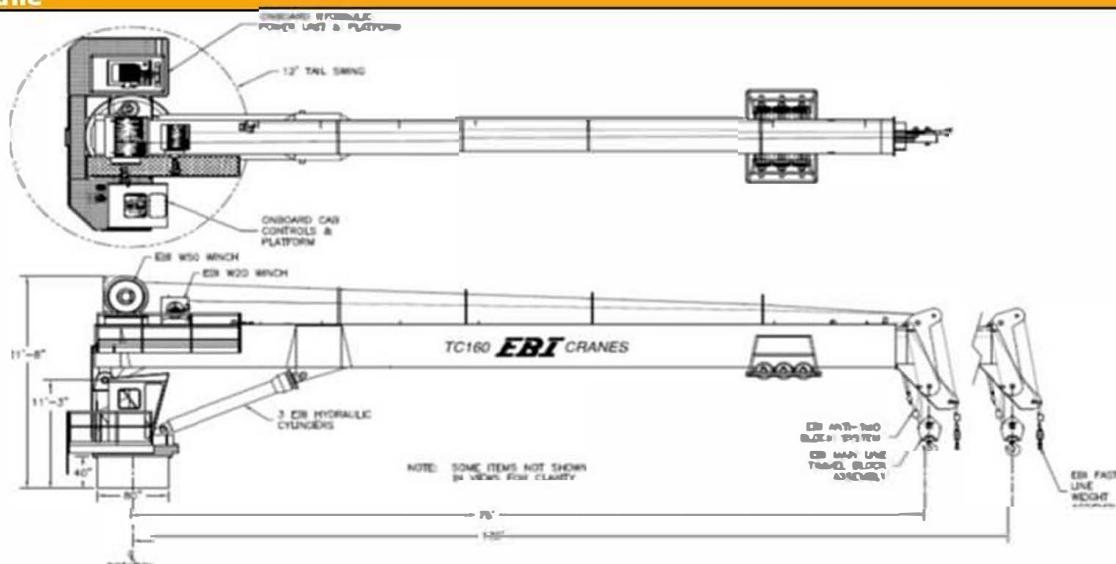
Moon pool	
4.2 Mt. X 4.2 Mt.	

Firefighting class 1	
Firefighting	FIFI 1
Foam Tank	10.9 m3
2 fire monitors one (foam + water) each of 1200 m3	
2 PTO fire pumps each 1850 m3/hr. @ 140m head	

General arrangements



Main crane



EBI CRANES
800 ST. BERNARD PKWY.
GRATYBATE, LA. 70048
USA
304-882-3245

P/N: 10224445720

API LOAD CHART

EBI CRANE TC160XHB75130D1031

4-PART LOAD LINE
RATING DETERMINED BY VESSEL SPECIFIC METHOD

REACH m.	BOOM ANG. DEG.	FULLY RETRACTED 22.0m MAX REACH					FULLY EXTENDED 30.6m MAX REACH					
		LOAD LINE KGS.		FAST LINE KGS.			LOAD LINE KGS.		FAST LINE KGS.			
		OFFBOARD	ONBOARD	OFFBOARD	ONBOARD	PERFORMED	OFFBOARD	ONBOARD	OFFBOARD	ONBOARD	PERFORMED	
3.7	80.0°	100,000	100,000	7,475	7,475	3,735						
4.6	78.5°	80,100	100,000	7,475	7,475	3,735						
6.1	74.5°	60,600	90,900	7,475	7,475	3,735						
7.0	---	---	---	---	---	---	80.0°	50,000	75,000	7,475	7,475	3,735
7.6	70.5°	48,500	74,250	7,475	7,475	3,735	78.5°	45,600	68,400	7,475	7,475	3,735
9.1	66.0°	40,800	61,200	7,475	7,475	3,735	76.0°	38,400	57,600	7,475	7,475	3,735
10.7	62.0°	31,800	47,700	7,475	7,475	3,735	74.0°	31,300	46,950	7,475	7,475	3,735
12.2	58.0°	27,500	41,250	7,475	7,475	3,735	72.0°	27,800	41,700	7,475	7,475	3,735
13.7	53.0°	22,800	34,200	7,475	7,475	3,735	69.0°	25,000	37,500	7,475	7,475	3,735
15.2	48.0°	19,700	29,550	7,475	7,475	3,735	67.0°	21,500	32,250	7,475	7,475	3,735
16.8	43.0°	16,900	25,350	7,475	7,475	3,735	64.5°	19,900	29,850	7,475	7,475	3,735
18.3	37.0°	16,000	24,000	7,475	7,475	3,735	62.0°	18,600	27,900	7,475	7,475	3,735
19.8	30.0°	14,800	22,200	7,475	7,475	3,735	59.5°	16,500	24,750	7,475	7,475	3,735
21.3	21.0°	12,400	18,600	7,475	7,475	3,735	57.0°	14,800	22,200	7,475	7,475	3,735
22.9	0.0°	9,700	14,550	7,475	7,475	3,735	54.5°	14,200	21,300	7,475	7,475	3,735
24.4							51.5°	13,000	19,500	7,475	7,475	3,735
25.9							49.0°	11,900	17,850	7,475	7,475	3,735
27.4							45.5°	11,100	16,650	7,475	7,475	3,735
29.0							42.5°	10,400	15,600	7,475	7,475	3,735
30.5							40.0°	9,900	14,850	7,475	7,475	3,735
32.0							36.0°	8,900	13,350	7,475	7,475	3,735
33.5							31.5°	8,200	12,300	7,475	7,475	3,735
35.1							27.5°	7,900	11,850	7,475	7,475	3,735
36.6							22.5°	7,300	10,950	7,300	7,475	3,650
38.1							16.0°	6,200	9,300	6,200	7,475	3,100
39.6							0.0°	4,100	6,150	4,100	6,150	2,050

REACH = CENTER OF BASE ROTATION TO CENTER OF LOAD LINE SHEAVE.